

(SSYKO3.SSYKO) 17341

AL-739 (FAA)

SSYKO THREE DEPARTURE (RNAV)

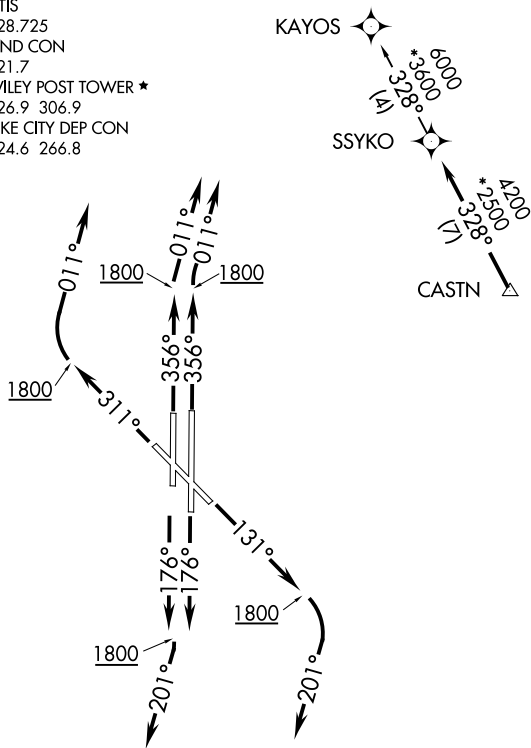
WILEY POST (PWA)
OKLAHOMA CITY, OKLAHOMA

ATIS
128.725
GND CON
121.7
WILEY POST TOWER ★
126.9 306.9
OKE CITY DEP CON
124.6 266.8

**TOP ALTITUDE:
ASSIGNED BY ATC**

TAKEOFF MINIMUMS:

Rwys 13, 17L/R, 31, 35L/R:
Standard with minimum climb
of 500' per NM to 2100.



NOTE: RADAR required.
NOTE: DME/DME/IRU or GPS required.
NOTE: RNAV 1.

NOTE: Chart not to scale.

DEPARTURE ROUTE DESCRIPTION

TAKEOFF RWY 13: Climb heading 131° to 1800, then right turn heading 201° or as assigned by ATC, expect RADAR vectors to CASTN, thence . . .

TAKEOFF RWYS 17L/R: Climb on heading 176° to 1800, then right turn heading 201° or as assigned by ATC, expect RADAR vectors to CASTN, thence . . .

TAKEOFF RWY 31: Climb on heading 311° to 1800, then right turn heading 011° or as assigned by ATC, expect RADAR vectors to CASTN, thence . . .

TAKEOFF RWY 35L: Climb on heading 356° to 1800, then heading 011° or as assigned by ATC, expect RADAR vectors to CASTN, thence . . .

TAKEOFF RWY 35R: Climb on heading 356° to 1800, then right turn heading 011° or as assigned by ATC, expect RADAR vectors to CASTN, thence . . .

. . . on track 328° to SSYKO, then on (transition). Maintain 3000 or as assigned by ATC. Expect filed altitude 10 minutes after departure.

KAYOS TRANSITION (SSYKO3.KAYOS):

SSYKO THREE DEPARTURE (RNAV)

(SSYKO3.SSYKO) 07DEC17

OKLAHOMA CITY, OKLAHOMA
WILEY POST (PWA)

SC-1, 16 APR 2026 to 14 MAY 2026

SC-1, 16 APR 2026 to 14 MAY 2026