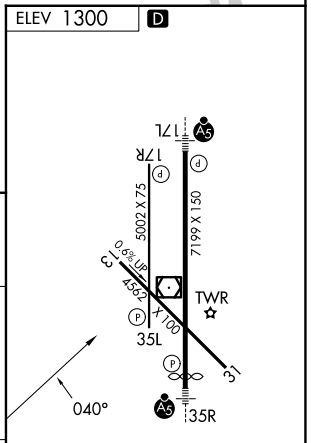
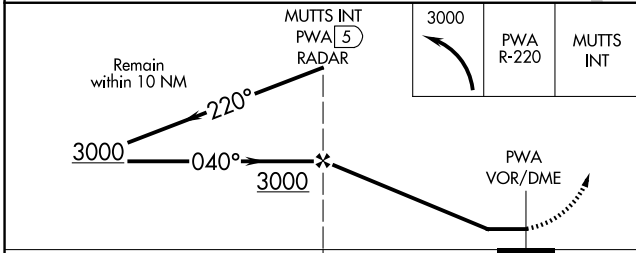
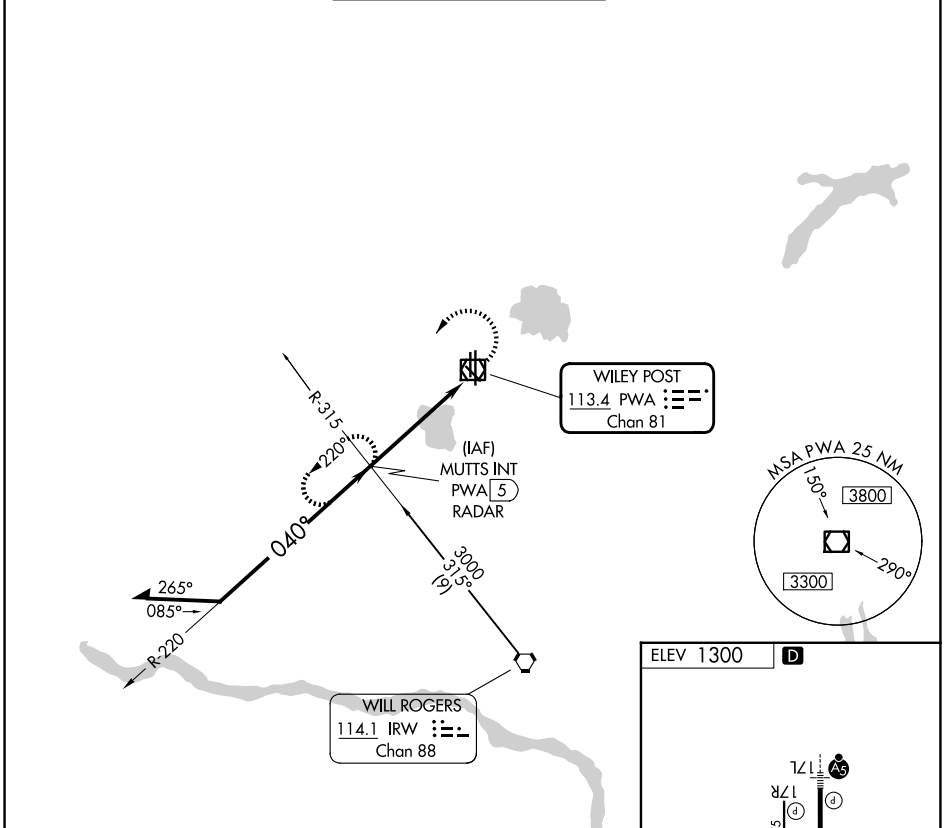


VOR/DME PWA <b>113.4</b> Chan <b>81</b>	APP CRS <b>040°</b>	Rwy Ldg TDZE Apt Elev <b>N/A</b> <b>N/A</b> <b>1300</b>
---	------------------------	--

**VOR-A**  
WILEY POST (PWA)

<b>ASR</b>	MISSED APPROACH: Climbing left turn to 3000 via PWA VOR/DME R-220 to MUTTS Int and hold.			
------------	--	--	--	--

ATIS <b>128.725</b>	OKE CITY APP CON <b>124.6 266.8</b>	WILEY POST TOWER ★ <b>126.9</b> (CTAF) <b>306.9</b>	GND CON <b>121.7</b>	UNICOM <b>122.95</b>
------------------------	--	--	-------------------------	-------------------------



CATEGORY	A	B	C	D
CIRCLING	1780-1	480 (500-1)	1880-1½ 580 (600-1½)	1880-2 580 (600-2)

REIL Rwy 17R and 35L **Ⓛ**  
HIRL Rwy 17L-35R **Ⓛ**  
MIRL Rwy 13-31 and 17R-35L **Ⓛ**

SC-1, 16 APR 2026 to 14 MAY 2026

SC-1, 16 APR 2026 to 14 MAY 2026