

(WENDY3.WENDY) 17341

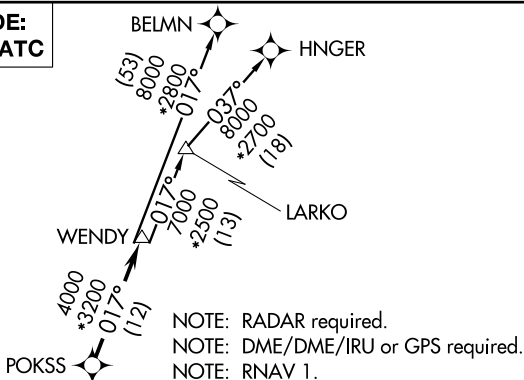
AL-739 (FAA)

WILEY POST (PWA)  
OKLAHOMA CITY, OKLAHOMA

# WENDY THREE DEPARTURE (RNAV)

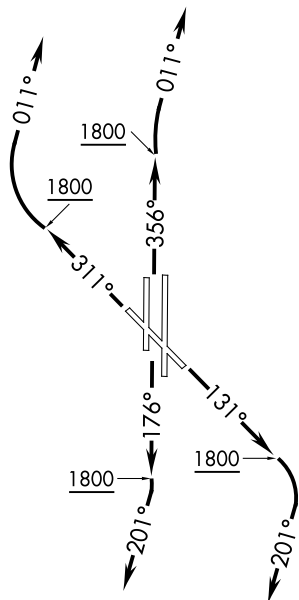
ATIS  
128.725  
GND CON  
121.7  
WILEY POST TOWER ★  
126.9 306.9  
OKE CITY DEP CON  
124.6 266.8

**TOP ALTITUDE:  
ASSIGNED BY ATC**



NOTE: RADAR required.  
NOTE: DME/DME/IRU or GPS required.  
NOTE: RNAV 1.

**TAKEOFF MINIMUMS**  
Rwys 13, 17R, 31, 35L/R: Standard with minimum climb of 500' per NM to 2100.



NOTE: Chart not to scale.

## DEPARTURE ROUTE DESCRIPTION

**TAKEOFF RWY 13:** Climb heading 131° to 1800, then right turn heading 201° or as assigned by ATC, expect RADAR vectors to POKSS, thence . . .

**TAKEOFF RWYS 17L/R:** Climb heading 176° to 1800, then right turn heading 201° or as assigned by ATC, expect RADAR vectors to POKSS, thence . . .

**TAKEOFF RWY 31:** Climb heading 311° to 1800, then right turn heading 011° or as assigned by ATC, expect RADAR vectors to POKSS, thence . . .

**TAKEOFF RWYS 35L:** Climb heading 356° to 1800, then heading 011° or as assigned by ATC, expect RADAR vectors to POKSS, thence . . .

**TAKEOFF RWYS 35R:** Climb heading 356° to 1800, then right turn heading 011° or as assigned by ATC, expect RADAR vectors to POKSS, thence . . .

. . . on track 017° to WENDY, then on (transition). Maintain 3000 or as assigned by ATC. Expect filed altitude 10 minutes after departure.

BELMN TRANSITION (WENDY3.BELMN)  
HNGER TRANSITION (WENDY3.HNGER)  
LARKO TRANSITION (WENDY3.LARKO)

WENDY THREE DEPARTURE (RNAV)  
(WENDY3.WENDY) 07DEC17

OKLAHOMA CITY, OKLAHOMA  
WILEY POST (PWA)

SC-1, 16 APR 2026 to 14 MAY 2026

SC-1, 16 APR 2026 to 14 MAY 2026