

LOC/DME I-EDE 110.95 Chan 46(Y)	APP CRS 190°	Rwy Ldg TDZE 19 Apt Elev 19	6001
---	------------------------	---	-------------

ILS or LOC RWY 19

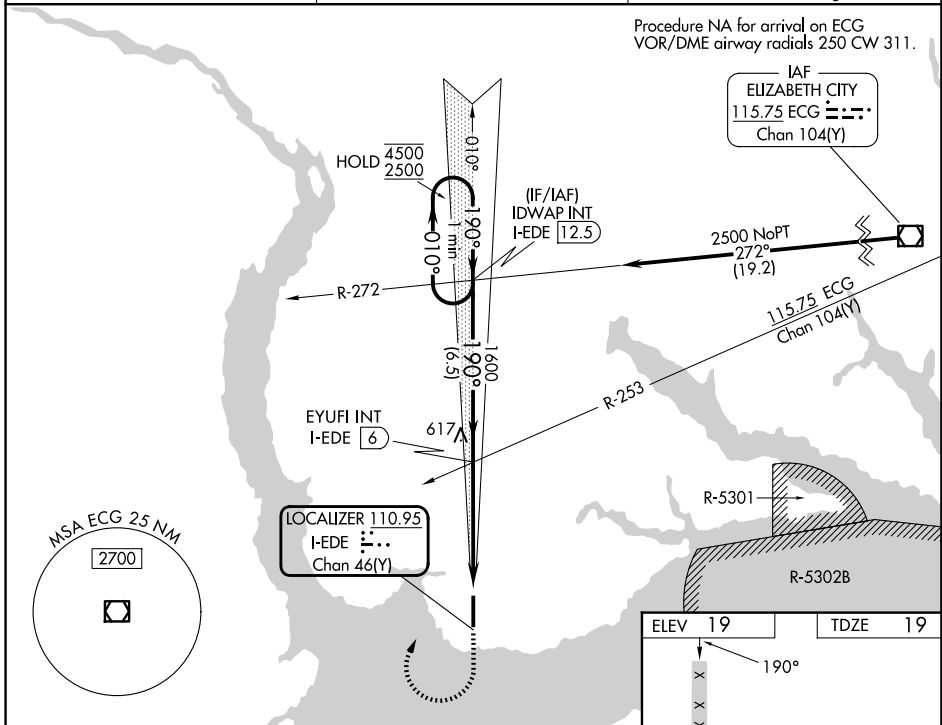
NORTHEASTERN RGNL (E/D/E)

RADAR or DME required for procedure entry.

▼ Rwy 19 helicopter visibility reduction below 3/4 SM NA. VDP NA when using ECG altimeter setting. When local altimeter setting not received, use ECG altimeter setting and increase S-ILS 19 DA to 276 feet; increase all MDAs 60 feet and S-LOC 19 visibility Cat C/D 1/2 SM, and Circling visibility Cat C 1/4 SM.

MISSED APPROACH: Climb to 600 then climbing right turn to 2500 on heading 030° and I-EDE localizer N course to IDWAP INT/I-EDE 12.5 DME and hold.

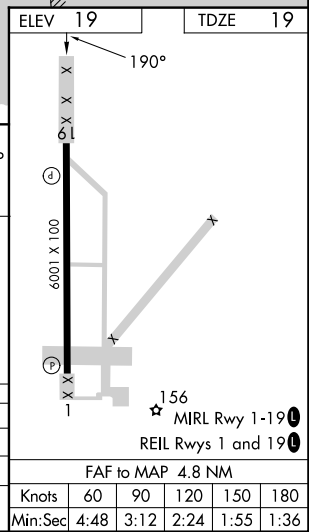
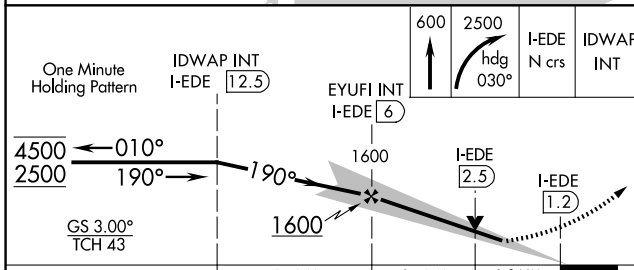
AWOS-3 118.275	WASHINGTON CENTER 123.85 279.65	UNICOM 123.0 (CTAF) 0
--------------------------	---	---------------------------------



Procedure NA for arrival on ECG VOR/DME airway radials 250 CW 311.

SE-2, 16 APR 2026 to 14 MAY 2026

SE-2, 16 APR 2026 to 14 MAY 2026



CATEGORY	A	B	C	D
S-ILS 19	219-3/4 200 (200-3/4)			
S-LOC 19	500-1	481 (500-1)	500-1 3/8	481 (500-1 3/8)
CIRCLING	520-1	501 (600-1)	560-1 1/2	580-2
			541 (600-1 1/2)	561 (600-2)

ELEV	19	TDZE	19
FAF to MAP 4.8 NM			
Knots	60	90	120 150 180
Min:Sec	4:48	3:12	2:24 1:55 1:36