

GARLAND SIX DEPARTURE  
(GARL6.TT) 17 APR 25

DALLAS EXEC (RBD)  
DALLAS, TEXAS

LONE STAR DEP CON  
125.2 343.65  
ATIS  
126.35  
CLINC DEL  
118.625  
GND CON  
119.475  
EXECUTIVE TOWER ★  
127.25 (CTAF)

**TOP ALTITUDE:  
ASSIGNED BY ATC**

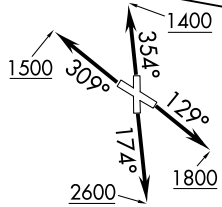
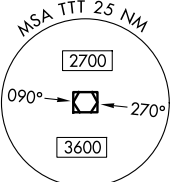
RADAR and DME required.

TAKEOFF MINIMUMS

Rwys 13, 31, 35: Standard.  
Rwy 17: 400-2 3/4 or standard with minimum  
climb of 220'/NM to 1200.

NOTE: SOLDO Transition: ATC assigned.

**MAVERICK**  
113.1 TTT  
Chan 78



**BONHAM**  
114.6 BYP  
Chan 93

**PARIS**  
113.6 PRX  
Chan 83

**TEXARKANA**  
116.3 TXK  
Chan 110

NOBLY

ECKEY

5000  
\*2100  
064°  
(38)

5000  
\*2100  
074°  
(39)

5000  
\*2300  
074°  
(36)

TRISS

SOLDO

1400  
094°  
3500  
\*2400  
(36)

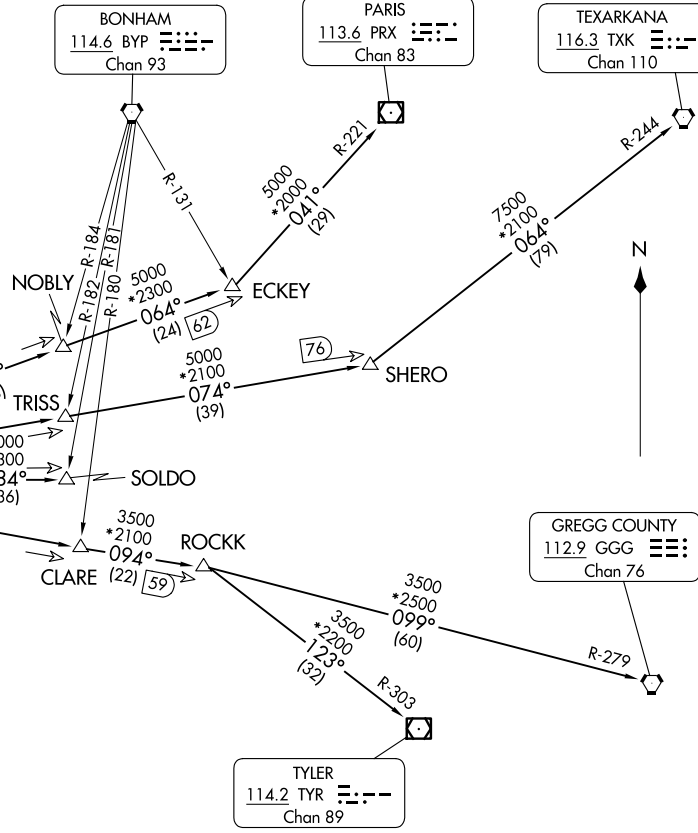
CLARE (22)

ROCKK

3500  
\*2500  
099°  
(60)

**TYLER**  
114.2 TYR  
Chan 89

**GREGG COUNTY**  
112.9 GGG  
Chan 76



(CONTINUED ON FOLLOWING PAGE)

(GARL6.TT) 25107  
GARLAND SIX DEPARTURE

AL-742 (FAA)

DALLAS EXEC (RBD)  
DALLAS, TEXAS

# GARLAND SIX DEPARTURE



## DEPARTURE ROUTE DESCRIPTION

TAKEOFF RUNWAY 13: Climb on heading 129° to 1800 before turning westbound.

TAKEOFF RUNWAY 17: Climb on heading 174° to 2600 before turning westbound.

TAKEOFF RUNWAY 31: Climb on heading 309° to 1500 before turning southbound.

TAKEOFF RUNWAY 35: Climb on heading 354° to 1400 before turning southbound.

When entering controlled airspace, fly assigned heading for RADAR vectors to appropriate route. Maintain ATC assigned altitude.

GREGG COUNTY TRANSITION (GARL6.GGG): From over TTT VOR/DME on TTT R-094 to ROCKK, then on GGG R-279 to GGG VORTAC.

PARIS TRANSITION (GARL6.PRX): From over TTT VOR/DME on TTT R-064 to ECKEY, then on PRX R-221 to PRX VOR/DME.

SOLDO TRANSITION (GARL6.SOLDO): From over TTT VOR/DME on TTT R-084 to SOLDO.

TEXARKANA TRANSITION (GARL6.TXK): From over TTT VOR/DME on TTT R-074 to SHERO, then on TXK R-244 to TXK VORTAC.

TYLER TRANSITION (GARL6.TYR): From over TTT VOR/DME on TTT R-094 to ROCKK, then on TYR R-303 to TYR VOR/DME.

SC-2, 16 APR 2026 to 14 MAY 2026

SC-2, 16 APR 2026 to 14 MAY 2026