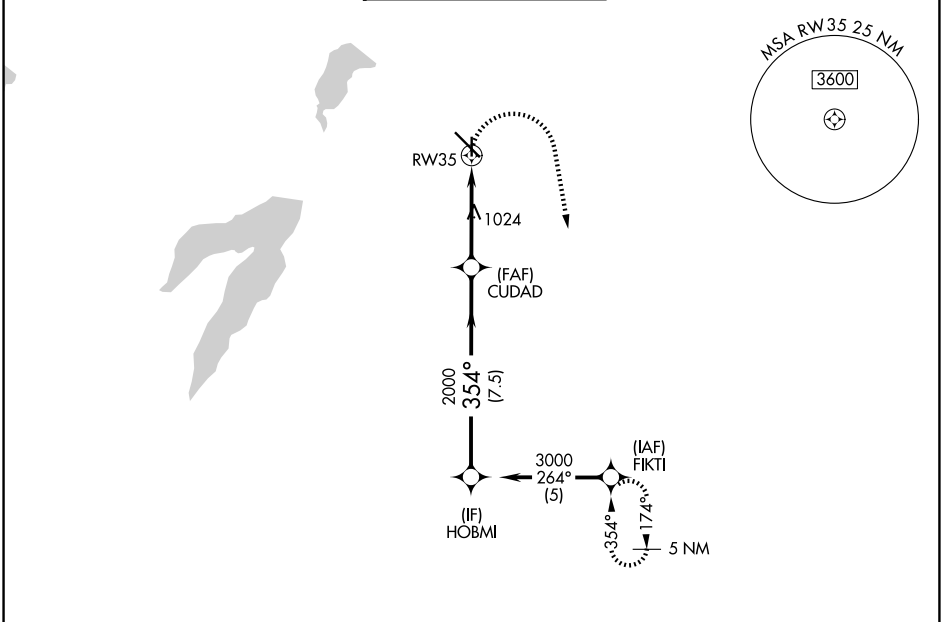


APP CRS <b>354°</b>	Rwy Ldg TDZE Apt Elev	<b>3800</b> <b>659</b> <b>661</b>
------------------------	-----------------------------	---

# RNAV (GPS) RWY 35

DALLAS EXEC (R.B.D)

RADAR required for procedure entry. RNP APCH.		MISSED APPROACH: Climbing right turn to 3000 direct FIKTI and hold.		
ATIS <b>126.35</b>	LONE STAR APP CON <b>125.2 343.65</b>	EXECUTIVE TOWER ★ <b>127.25 (CTAF) 0</b>	GND CON <b>119.475</b>	UNICOM <b>122.95</b>



SC-2, 16 APR 2026 to 14 MAY 2026

SC-2, 16 APR 2026 to 14 MAY 2026

