

DALLAS, TEXAS

AL-742 (FAA)

26078

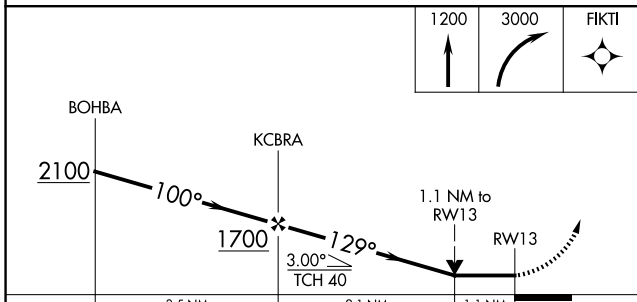
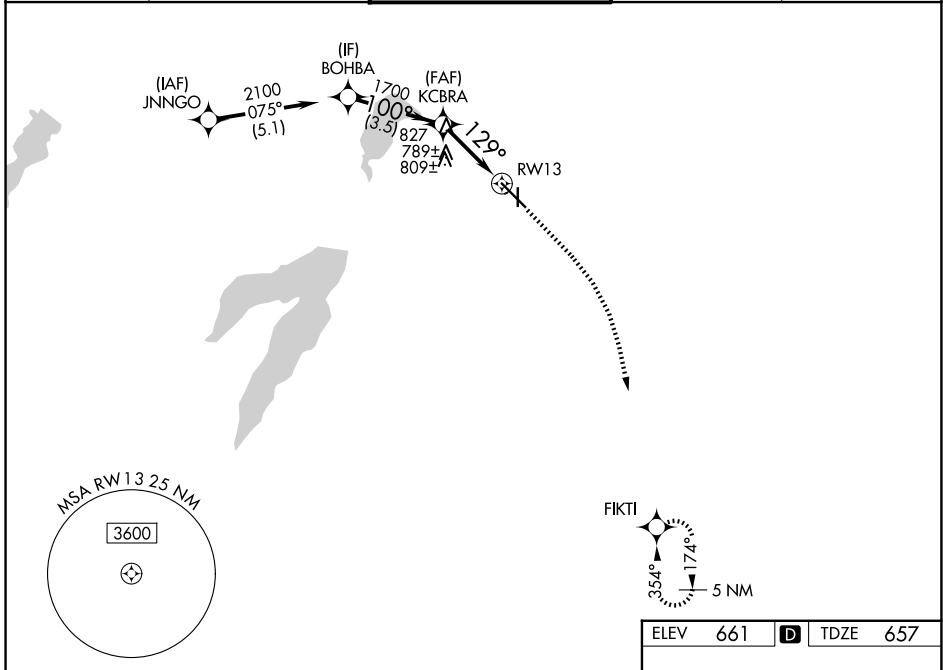
WAAS CH 78444 W13A	APP CRS 129°	Rwy Ldg TDZE Apt Elev	5537 657 661
----------------------------------------	------------------------	-----------------------------	-----------------------------------------

RNAV (GPS) Y RWY 13

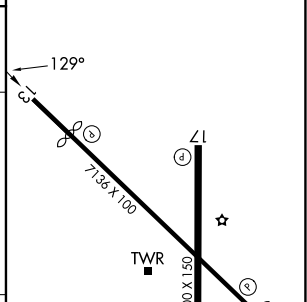
DALLAS EXEC (RBD)

RNP APCH - GPS.		MISSED APPROACH: Climb to 1200 then climbing right turn to 3000 direct FIKTI and hold.	
<p>▼ Rwy 13 helicopter visibility reduction below ¾ SM NA.</p>			

ATIS 126.35	LONE STAR APP CON 125.2 343.65	EXECUTIVE TOWER ★ 127.25 (CTAF) 0	GND CON 119.475	UNICOM 122.95
-----------------------	------------------------------------------	---------------------------------------------	---------------------------	-------------------------



ELEV	661	D	TDZE	657
------	-----	---	------	-----



CATEGORY	A	B	C	D
LP MDA	1040-1	383 (400-1)	1040-1½	383 (400-1½)
LNAV MDA	1060-1	403 (400-1)	1060-1½	403 (400-1½)
CIRCLING	1160-1 499 (500-1)	1220-1 559 (600-1)	1340-2 679 (700-2)	1400-2¼ 739 (800-2¼)

REIL Rwy 13, 17, 31 and 35
MIRL Rwy 13-31 and 17-35 0

SC-2, 16 APR 2026 to 14 MAY 2026

SC-2, 16 APR 2026 to 14 MAY 2026

DALLAS, TEXAS
Amdt 1 12JUN25

32°41'N-96°52'W

RNAV (GPS) Y RWY 13

DALLAS EXEC (RBD)