

DALLAS, TEXAS

AL-742 (FAA)

26078

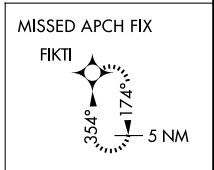
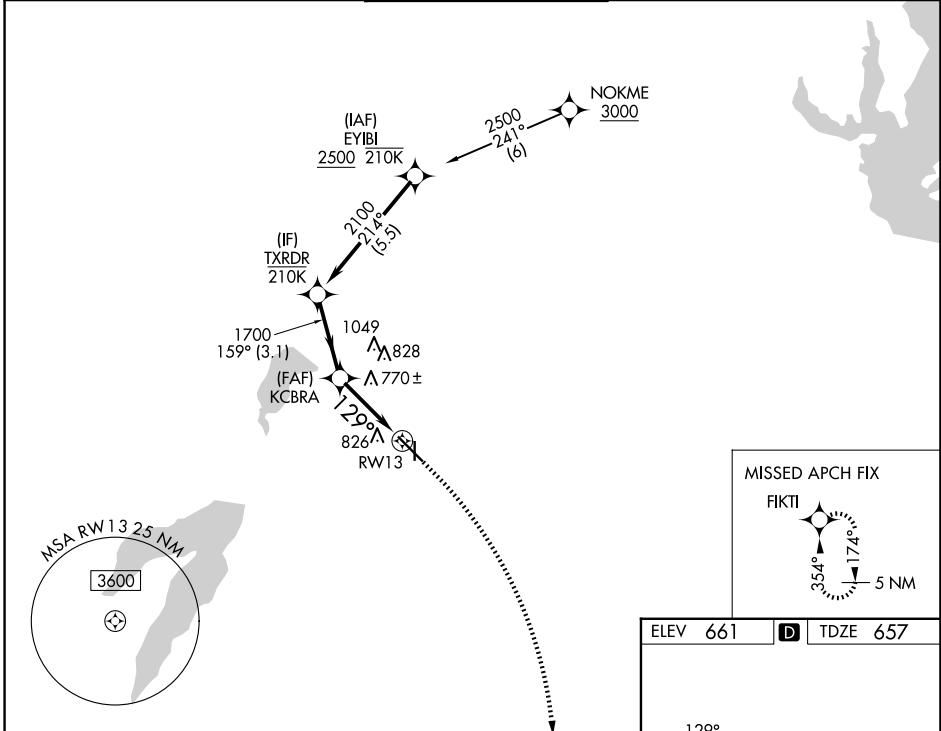
WAAS CH 50247 W13B	APP CRS 129°	Rwy Ldg TDZE 657 Apt Elev 661	5537 657 661
--	------------------------	---	---

RNAV (GPS) Z RWY 13

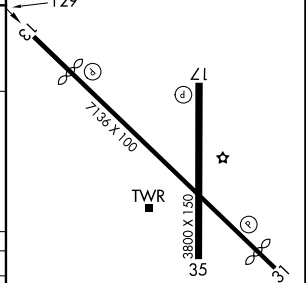
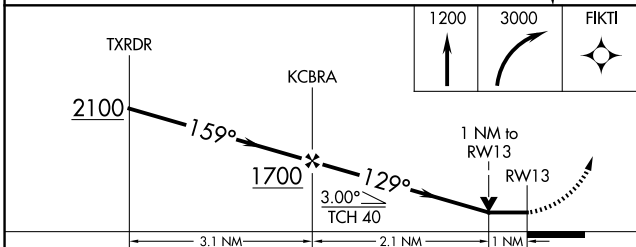
DALLAS EXEC (R.B.D)

RNP APCH-GPS.		MISSED APPROACH: Climb to 1200 then climbing right turn to 3000 direct FIKTI and hold.	
Rwy 13 helicopter visibility reduction below 3/4 SM NA.			

ATIS 126.35	LONE STAR APP CON 125.2 343.65	EXECUTIVE TOWER ★ 127.25 (CTAF) 0	GND CON 119.475	UNICOM 122.95
-----------------------	--	---	---------------------------	-------------------------



ELEV 661	D	TDZE 657
----------	----------	----------



CATEGORY	A	B	C	D
LP MDA	1020-1 363 (400-1)			
LNAV MDA	1060-1 403 (400-1)	1060-1 1/8 403 (400-1 1/8)		
CIRCLING	1160-1 499 (500-1)	1220-1 559 (600-1)	1340-2 679 (700-2)	1400-2 1/4 739 (800-2 1/4)

REIL Rwy 13, 17, 31 and 35
MIRL Rwy 13-31 and 17-35 **0**

SC-2, 16 APR 2026 to 14 MAY 2026

SC-2, 16 APR 2026 to 14 MAY 2026

DALLAS, TEXAS
Orig 12JUN25

32°41'N-96°52'W

RNAV (GPS) Z RWY 13

DALLAS EXEC (R.B.D)