

VOR/DME CVE 116.2 Chan 109	APP CRS 165°	Rwy Ldg 3800 TDZE 658 Apt Elev 661
--	------------------------	---

VOR RWY 17

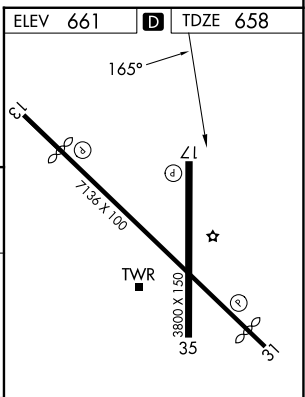
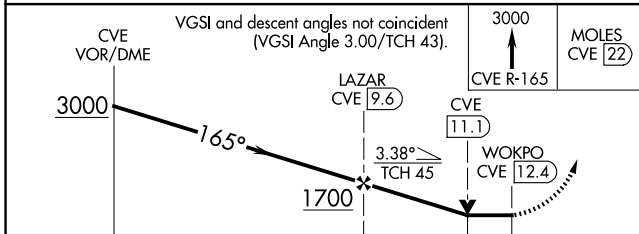
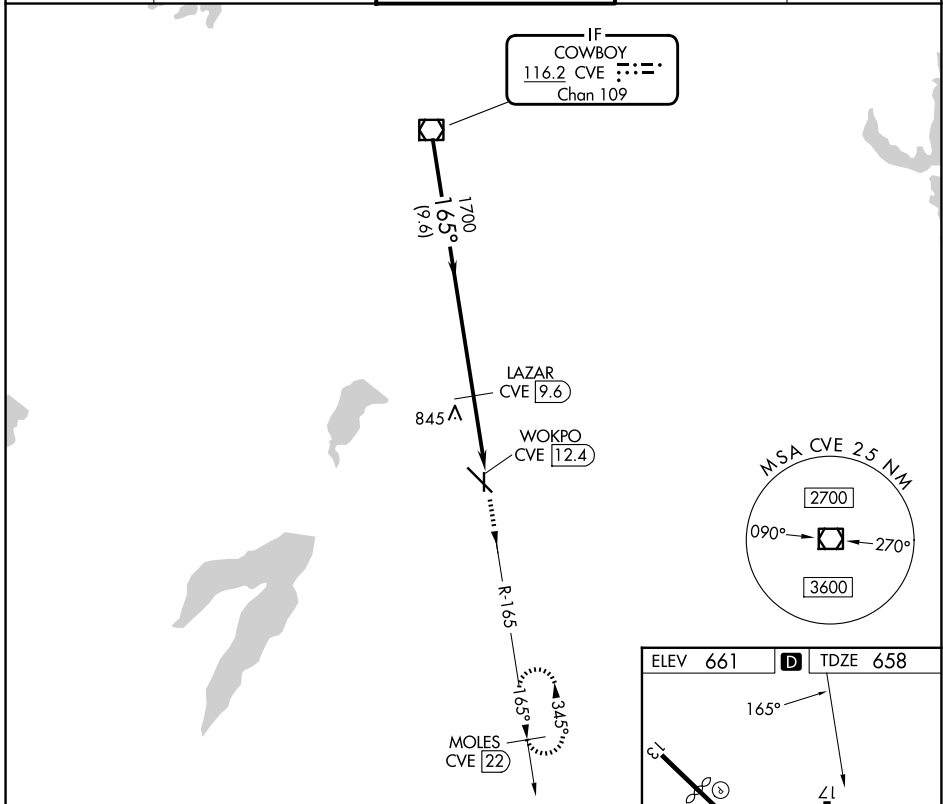
DALLAS EXEC (R.B.D)

DME required. RADAR required for procedure entry.

⚠ Rwy 17 helicopter visibility reduction below 3/4 SM NA.

MISSED APPROACH: Climb to 3000 on CVE
VOR/DME R-165 to MOLES/22 DME and hold.

ATIS 126.35	LONE STAR APP CON 125.2 343.65	EXECUTIVE TOWER ★ 127.25 (CTAF) 0	GND CON 119.475	UNICOM 122.95
-----------------------	--	---	---------------------------	-------------------------



	9.6 NM		1.5 NM		1.3 NM	
CATEGORY	A	B	C	D		
S-17	1120-1	462 (500-1)	1120-1¼	462 (500-1¼)		
CIRCLING	1160-1 499 (500-1)	1220-1 559 (600-1)	1340-2 679 (700-2)	1400-2¼ 739 (800-2¼)		

REIL Rwy 13, 17, 31 and 35
MIRL Rwy 13-31 and 17-35

SC-2, 16 APR 2026 to 14 MAY 2026

SC-2, 16 APR 2026 to 14 MAY 2026