

(AGERS1 .AGERS) 22139

AL-744 (FAA)

FORT LAUDERDALE/HOLLYWOOD INTL (F.L.L.)

# AGERS ONE DEPARTURE (RNAV)

FORT LAUDERDALE, FLORIDA

**TOP ALTITUDE:  
4000**

RNAV 1- DME/DME/IRU or GPS.  
RADAR required.

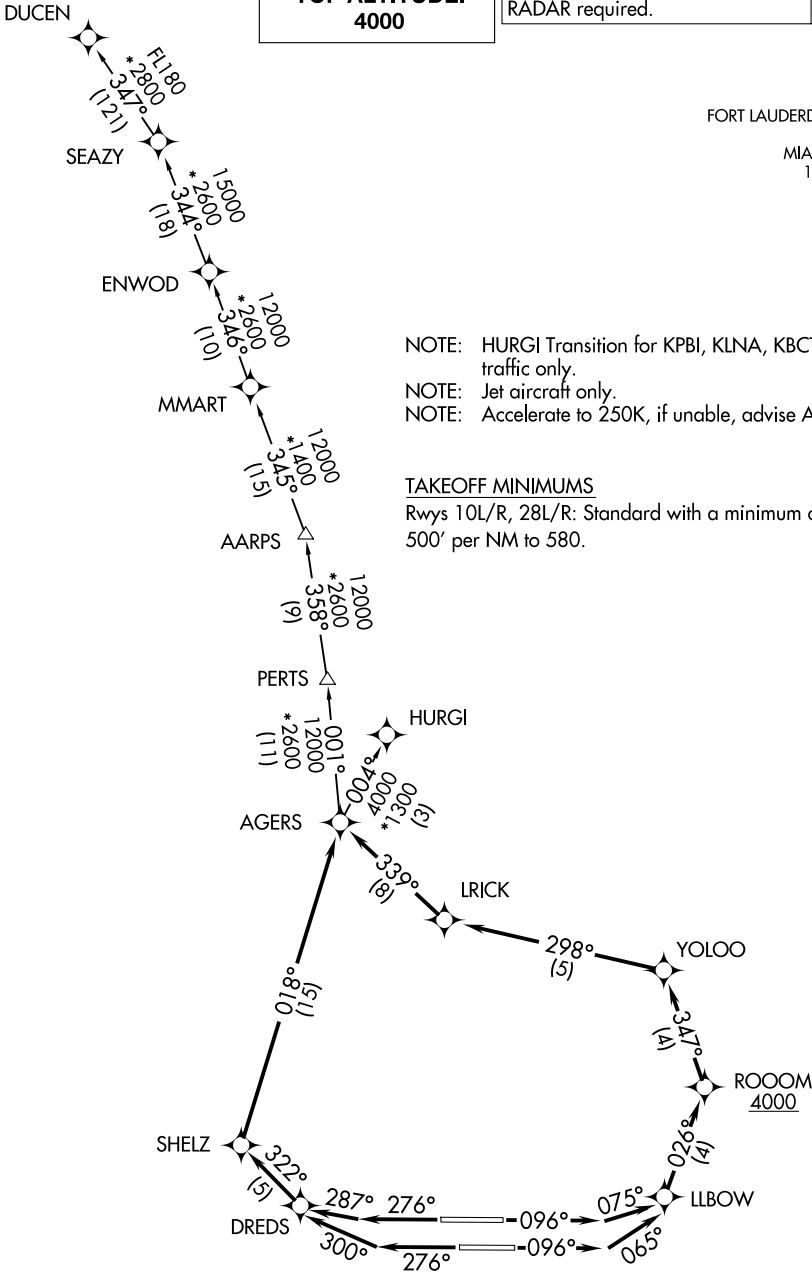
D-ATIS 135.0  
CLNC DEL 128.4  
CPDLC 121.4  
GND CON 121.4  
FORT LAUDERDALE TOWER 119.3 257.8  
MIAMI DEP CON 126.05 251.1

FORT LAUDERDALE TOWER 119.3 257.8  
MIAMI DEP CON 126.05 251.1

NOTE: HURGI Transition for KPBI, KLNA, KBCT landing traffic only.  
NOTE: Jet aircraft only.  
NOTE: Accelerate to 250K, if unable, advise ATC.

### TAKEOFF MINIMUMS

Rwys 10L/R, 28L/R: Standard with a minimum climb of 500' per NM to 580.



SE-3, 16 APR 2026 to 14 MAY 2026

SE-3, 16 APR 2026 to 14 MAY 2026

(NARRATIVE ON FOLLOWING PAGE)

NOTE: Chart not to scale.

## AGERS ONE DEPARTURE (RNAV)

FORT LAUDERDALE, FLORIDA

(AGERS1 .AGERS) 19MAY22

FORT LAUDERDALE/HOLLYWOOD INTL (F.L.L.)



DEPARTURE ROUTE DESCRIPTION

TAKEOFF RUNWAY 10L: Climb on heading 096° to intercept course 075° to LLBOW, then on track 026° to cross ROOOM at or above 4000, then on depicted route to AGERS, thence. . .

TAKEOFF RUNWAY 10R: Climb on heading 096° to intercept course 065° to LLBOW, then on track 026° to cross ROOOM at or above 4000, then on depicted route to AGERS, thence. . .

TAKEOFF RUNWAY 28L: Climb on heading 276° to intercept course 300° to DREDS, then on depicted route to AGERS, thence. . .

TAKEOFF RUNWAY 28R: Climb on heading 276° to intercept course 287° to DREDS, then on depicted route to AGERS, thence. . .

. . .(Transition). Maintain 4000, expect clearance to filed altitude within 10 minutes after departure.

DUCEN TRANSITION (AGERS1 .DUCEN)

HURGI TRANSITION (AGERS1 .HURGI)

SE-3, 16 APR 2026 to 14 MAY 2026

SE-3, 16 APR 2026 to 14 MAY 2026