

(FLI2.FLI) 26DEC24

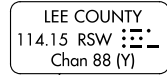
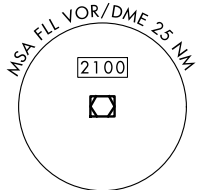
FORT LAUDERDALE TWO DEPARTURE

FORT LAUDERDALE/HOLLYWOOD INTL (F.L.I.)

FORT LAUDERDALE, FLORIDA

**TOP ALTITUDE:  
(JETS) 4000  
(PROPS) 2000**

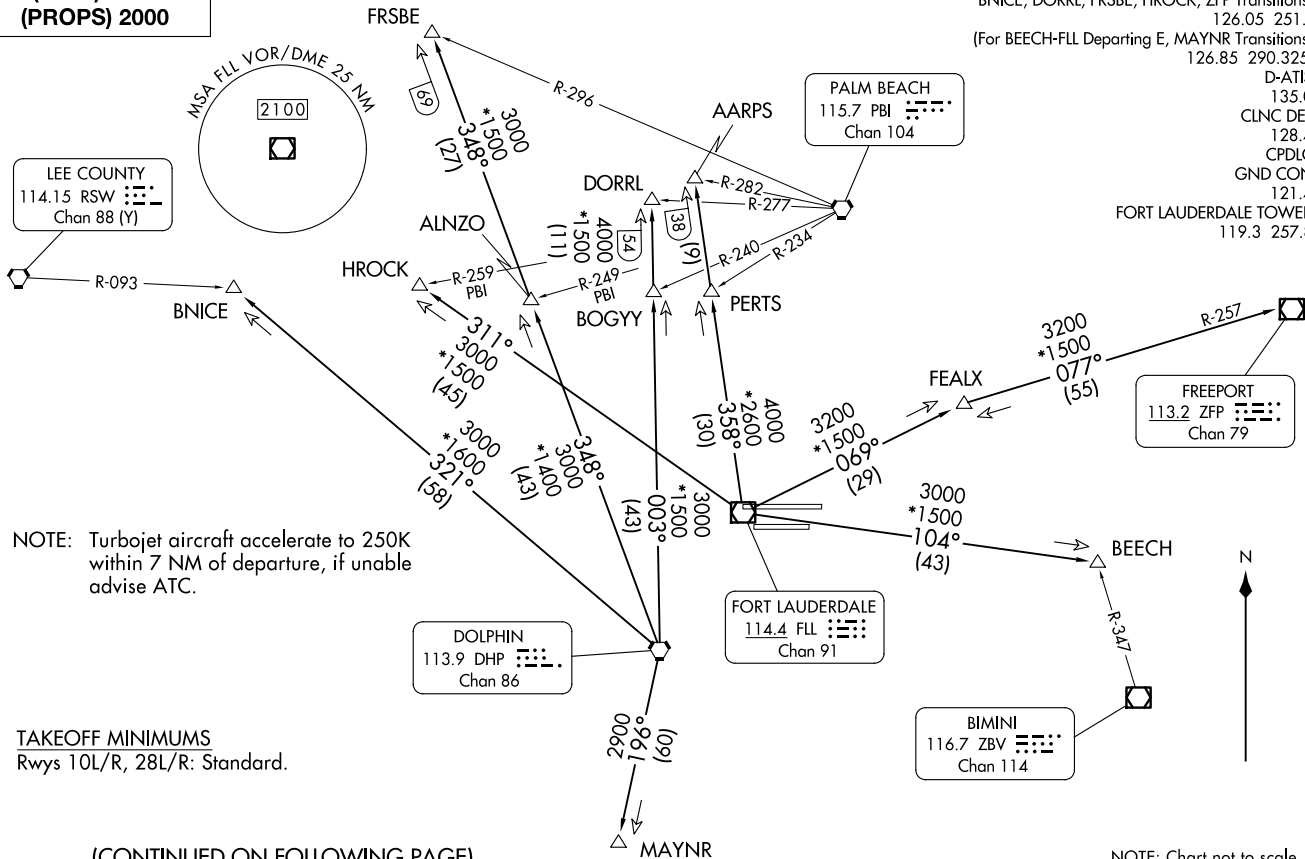
RADAR and DME required.



NOTE: Turbojet aircraft accelerate to 250K within 7 NM of departure, if unable advise ATC.

TAKEOFF MINIMUMS  
Rwys 10L/R, 28L/R: Standard.

(CONTINUED ON FOLLOWING PAGE)



NOTE: Chart not to scale.

(FLI2.FLI) 26331

AL-744 (FAA)

FORT LAUDERDALE/HOLLYWOOD INTL (F.L.I.)  
FORT LAUDERDALE, FLORIDA

# FORT LAUDERDALE TWO DEPARTURE



## DEPARTURE ROUTE DESCRIPTION

TAKEOFF RUNWAY 10L: Climb on assigned heading, if assigned left turn, climb to 500 before turning left, thence. . . .

TAKEOFF RUNWAY 10R: Climb on assigned heading, thence. . . .

TAKEOFF RUNWAY 28L: Climb on assigned heading, if assigned left turn, climb to 700 before turning left, thence. . . .

TAKEOFF RUNWAY 28R: Climb on assigned heading, if assigned left turn, climb to 500 before turning left, thence. . . .

...PROPS maintain 2000, JETS maintain 4000 and expect RADAR vectors to appropriate transition. Expect further clearance to filed altitude ten (10) minutes after departure.

AARPS TRANSITION (FLL2.AARPS): From over FLL VOR/DME on FLL R-358 to AARPS.

BEECH TRANSITION (FLL2.BEECH): From over FLL VOR/DME on FLL R-104 to BEECH.

BNICE TRANSITION (FLL2.BNICE): From over DHP VORTAC on DHP R-321 to BNICE.

DORRL TRANSITION (FLL2.DORRL): From over DHP VORTAC on DHP R-003 to DORRL.

FEALX TRANSITION (FLL2.FEALX): From over FLL VOR/DME on FLL R-069 to FEALX.

FREEPORT TRANSITION (FLL2.ZFP): From over FLL VOR/DME on FLL R-069 to FEALX, then on ZFP R-257 to ZFP VOR/DME.

FRSBE TRANSITION (FLL2.FRSBE): From over DHP VORTAC on DHP R-348 to FRSBE.

HROCK TRANSITION (FLL2.HROCK): From over FLL VOR/DME on FLL R-311 to HROCK.

MAYNR TRANSITION (FLL2.MAYNR): From over DHP VORTAC on DHP R-196 to MAYNR.

SE-3, 16 APR 2026 to 14 MAY 2026

SE-3, 16 APR 2026 to 14 MAY 2026