

MIAMI APP CON
128.6 306.975
FLL D-ATIS
135.0
FXE ATIS
119.85
HWO ATIS
135.475
OPF ATIS
125.9
PMP ATIS
120.55

(KYAKS.KYAKS3) 22307

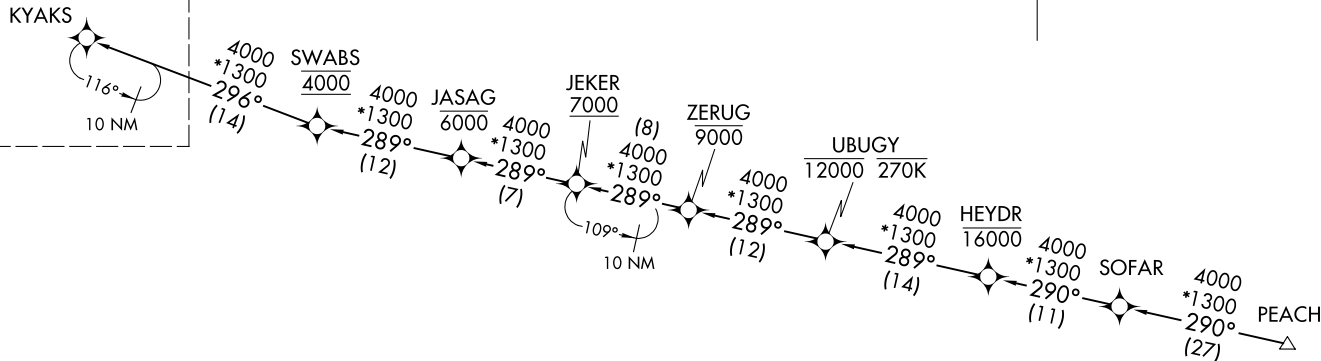
AL-744 (FAA)

FORT LAUDERDALE, FLORIDA



NOTE: Turboprop and prop aircraft only.
NOTE: Do not file JEKER Transition - to be assigned by ATC.

See following page
for arrival routes.



RNAV 1-GPS.
RADAR required.

JEKER TRANSITION (JEKER.KYAKS3)
PEACH TRANSITION (PEACH.KYAKS3)
SOFAR TRANSITION (SOFAR.KYAKS3)

(NARRATIVE ON FOLLOWING PAGE)
(CONTINUED ON FOLLOWING PAGE)

NOTE: Chart not to scale.

KYAKS THREE ARRIVAL (RNAV) Transition Routes
(KYAKS.KYAKS3) 03NOV22

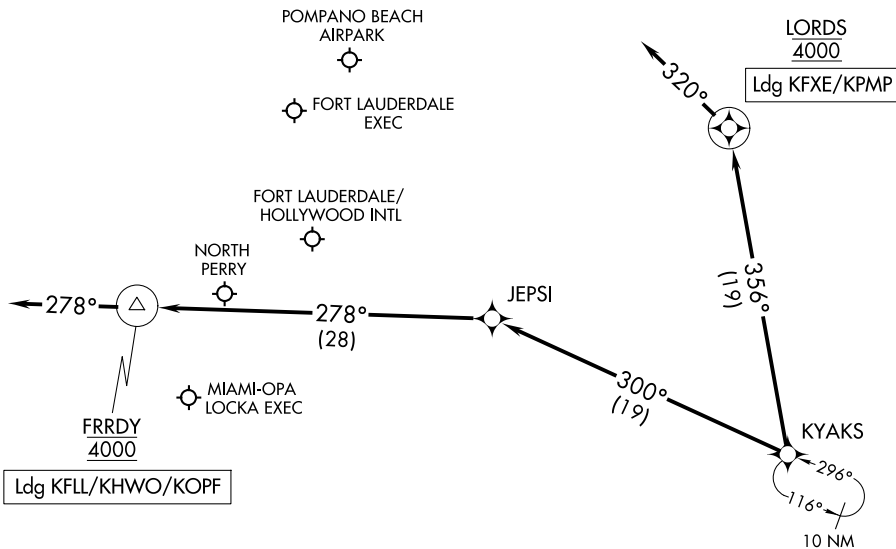
FORT LAUDERDALE, FLORIDA

KYAKS THREE ARRIVAL (RNAV) Arrival Routes

FORT LAUDERDALE, FLORIDA

RNAV 1-GPS.
RADAR required.

MIAMI APP CON
128.6 306.975
FLL D-ATIS
135.0
FXE ATIS
119.85
HWO ATIS
135.475
OPF ATIS
125.9
PMP ATIS
120.55



NOTE: Turboprop and prop aircraft only.

NOTE: Chart not to scale.

ARRIVAL ROUTE DESCRIPTION

LANDING KFL/KHWO/KOPF: From KYAKS on track 300° to JEPSI, then on track 278° to cross FRRDY at 4000, then on track 278°. Expect RADAR vectors to final approach course.

LANDING KFXE/KPMP: From KYAKS on track 356° to cross LORDS at 4000, then on heading 320°. Expect RADAR vectors to final approach course.