

(LIFRR2.LIFRR) 24081

AL-744 (FAA)

FORT LAUDERDALE/HOLLYWOOD INTL (FLL)

# LIFRR TWO DEPARTURE(RNAV)

FORT LAUDERDALE, FLORIDA

RNAV 1 - DME/DME/IRU or GPS.

**TOP ALTITUDE:**

**4000**

RADAR required for non-GPS equipped aircraft.

MIAMI DEP CON

126.05 251.1

D-ATIS

135.0

CLNC DEL

128.4

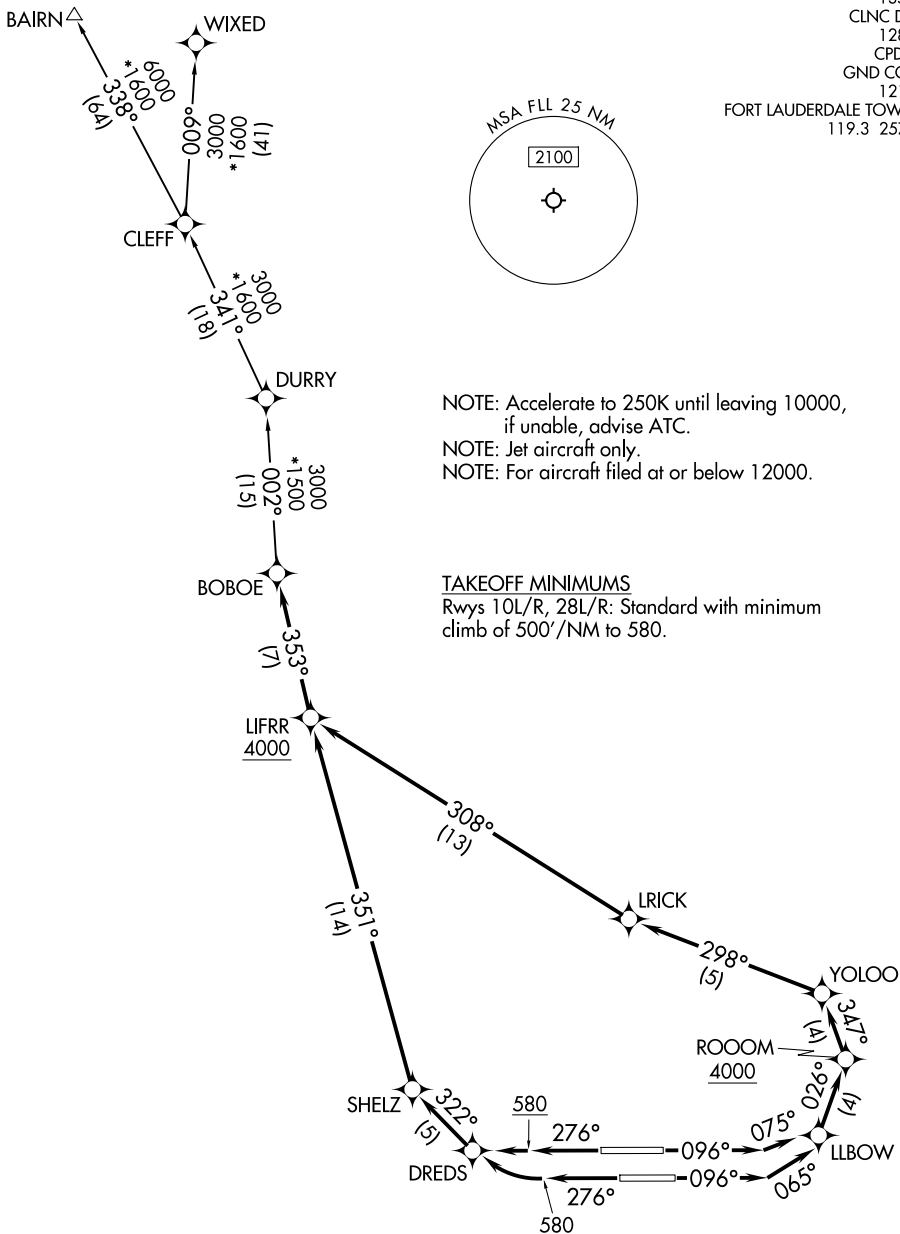
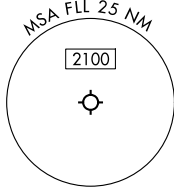
CPDLC

GND CON

121.4

FORT LAUDERDALE TOWER

119.3 257.8



NOTE: Accelerate to 250K until leaving 10000, if unable, advise ATC.  
 NOTE: Jet aircraft only.  
 NOTE: For aircraft filed at or below 12000.

TAKEOFF MINIMUMS  
 Rwy's 10L/R, 28L/R: Standard with minimum climb of 500'/NM to 580.

(CONTINUED ON FOLLOWING PAGE)

NOTE: Chart not to scale.

SE-3, 16 APR 2026 to 14 MAY 2026

SE-3, 16 APR 2026 to 14 MAY 2026

# LIFRR TWO DEPARTURE(RNAV)

(LIFRR2.LIFRR) 21MAR24

FORT LAUDERDALE, FLORIDA

FORT LAUDERDALE/HOLLYWOOD INTL (FLL)

# LIFRR TWO DEPARTURE(RNAV)



## DEPARTURE ROUTE DESCRIPTION SEE ADDITIONAL REQUIREMENTS ON AAUP

TAKEOFF RUNWAY 10L: Climb on heading 096° to intercept course 075° to LLBOW, then on track 026° to cross ROOOM at or above 4000, then on track 347° to YOLOO, then on track 298° to LRICK, then on track 308° to cross LIFRR at or above 4000, thence. . .

TAKEOFF RUNWAY 10R: Climb on heading 096° to intercept course 065° to LLBOW, then on track 026° to cross ROOOM at or above 4000, then on track 347° to YOLOO, then on track 298° to LRICK, then on track 308° to cross LIFRR at or above 4000, thence. . .

TAKEOFF RUNWAY 28L: Climb on heading 276° to 580, then right turn direct DREDS, then on track 322° to SHELZ, then on track 351° to cross LIFRR at or above 4000, thence. . .

TAKEOFF RUNWAY 28R: Climb on heading 276° to 580, then direct DREDS, then on track 322° to SHELZ, then on track 351° to cross LIFRR at or above 4000, thence. . .

. . .on track 353° to BOBOE, then on assigned transition, maintain 4000, expect clearance to filed altitude within 10 minutes after departure.

BAIRN TRANSITION (LIFRR2.BAIRN)  
WIXED TRANSITION (LIFRR2.WIXED)

SE-3, 16 APR 2026 to 14 MAY 2026

SE-3, 16 APR 2026 to 14 MAY 2026