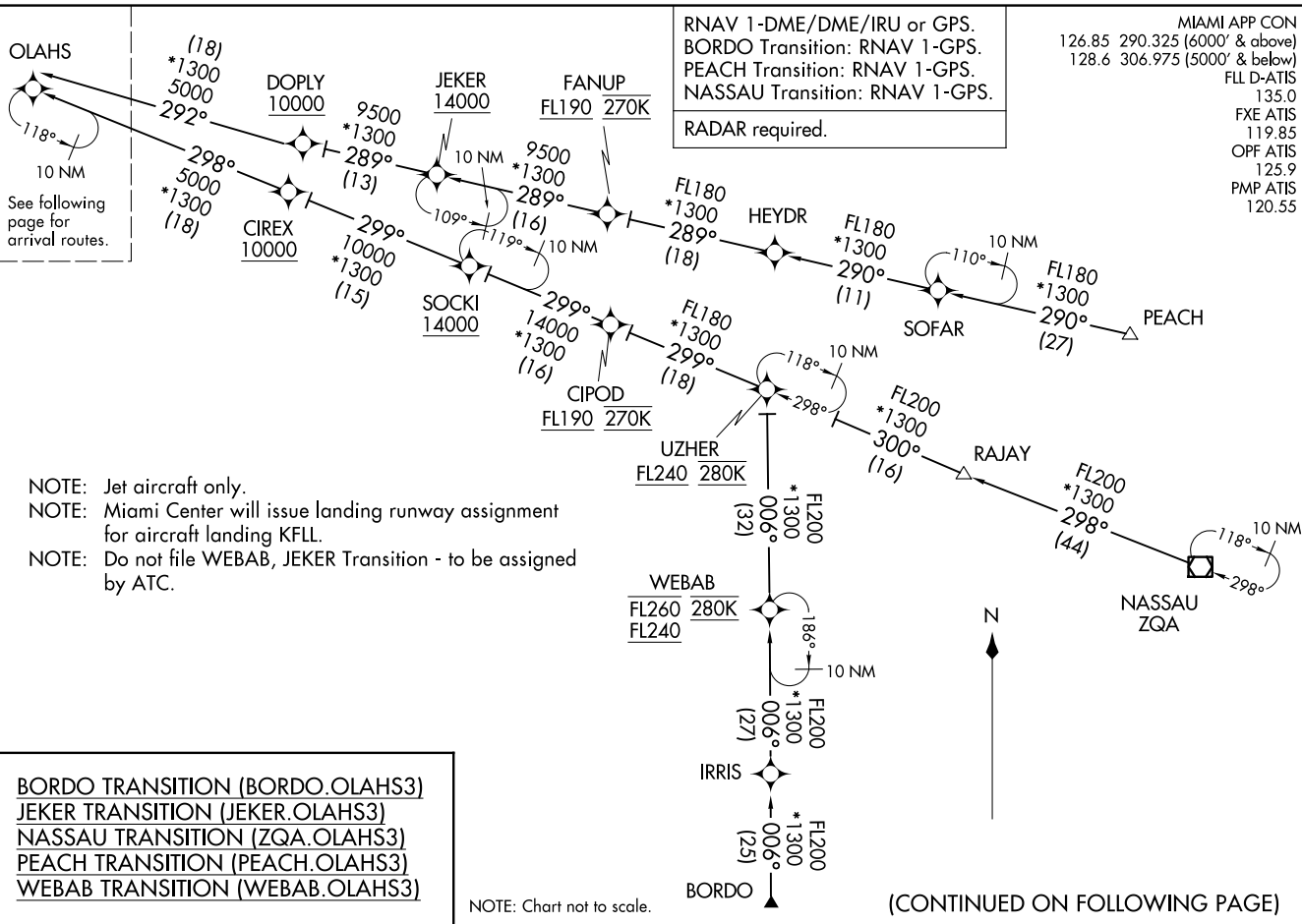


OLAHS THREE ARRIVAL (RNAV) (OLAHS.OLAHS3) 03NOV22

OLAHS THREE ARRIVAL (RNAV) Transition Routes

FORT LAUDERDALE, FLORIDA



OLAHS THREE ARRIVAL (RNAV) 25331

AL-7/44 (FAA)

OLAHS THREE ARRIVAL (RNAV) Transition Routes FORT LAUDERDALE, FLORIDA

(CONTINUED ON FOLLOWING PAGE)

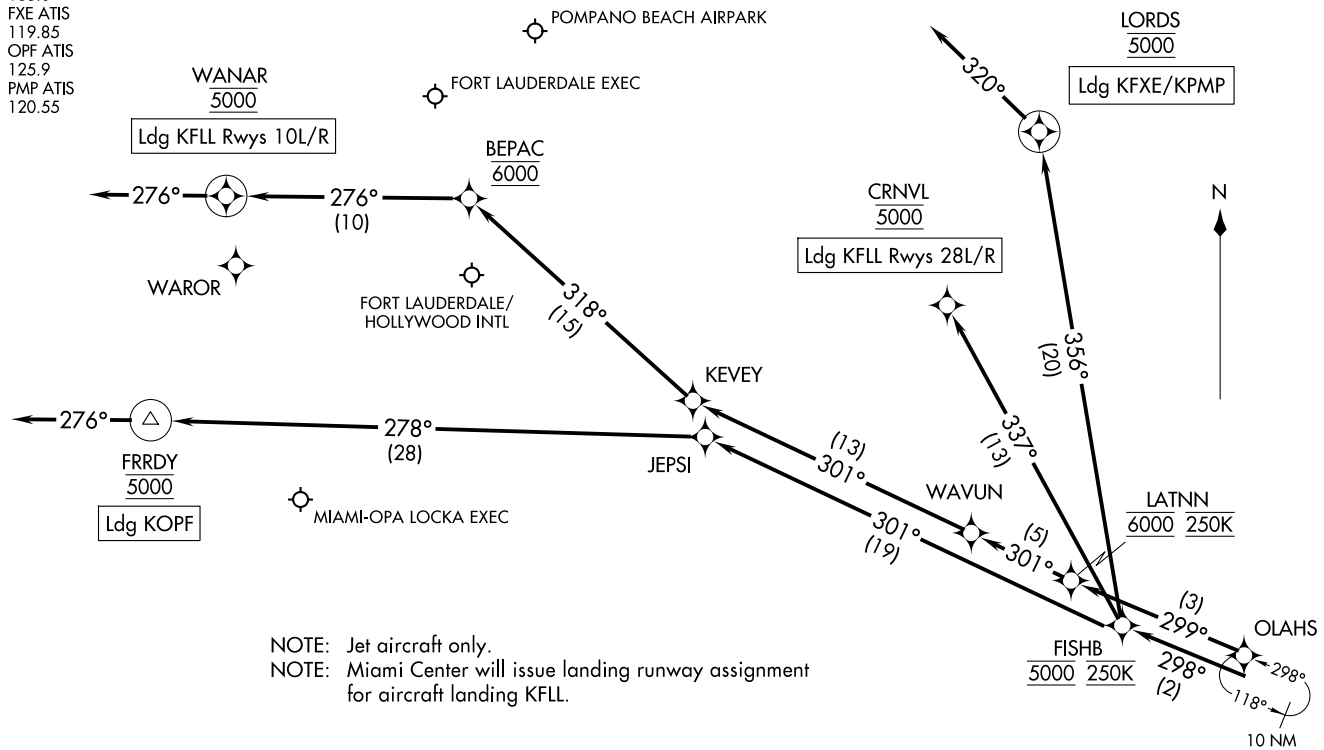
RNAV 1-DME/DME/IRU or GPS.  
RADAR required.

(OLAH3.OLAH3) 03NOV22

OLAH3 THREE ARRIVAL (RNAV) Arrival Routes

FORT LAUDERDALE, FLORIDA

MIAMI APP CON  
126.85 290.325 (6000' & above)  
128.6 306.975 (5000' & below)  
FLL D-ATIS  
135.0  
FXE ATIS  
119.85  
OPF ATIS  
125.9  
PMP ATIS  
120.55



NOTE: Jet aircraft only.  
NOTE: Miami Center will issue landing runway assignment for aircraft landing KFL.

NOTE: Chart not to scale.

(NARRATIVE ON FOLLOWING PAGE)

(OLAH3.OLAH3) 25331

AL-7/44 (FAA)

Arrival Routes

FORT LAUDERDALE, FLORIDA

ARRIVAL ROUTE DESCRIPTION

LANDING KFL RUNWAYS 10L/R: From OLAHS on track 299° to cross LATNN at 6000 and at 250K, then on track 301° to WAVUN, then on track 301° to KEVEY, then on track 318° to cross BEPAC at 6000, then on track 276° to cross WANAR at 5000, then on track 276°. Expect RADAR vectors to final approach course.

LANDING KFL RUNWAYS 28L/R: From OLAHS on track 298° to cross FISHB at 5000 and at 250K, then on track 337° to cross CRNVL at 5000.

LANDING KFXE/KPMP: From OLAHS on track 298° to cross FISHB at 5000 and at 250K, then on track 356° to cross LORDS at 5000, then on heading 320°. Expect RADAR vectors to final approach course.

LANDING KOPF: From OLAHS on track 298° to cross FISHB at 5000 and at 250K, then on track 301° to JEPSI, then on track 278° to cross FRRDY at 5000, then on heading 276°. Expect RADAR vectors to final approach course.

SE-3, 16 APR 2026 to 14 MAY 2026

SE-3, 16 APR 2026 to 14 MAY 2026