

**TOP ALTITUDE:  
4000**

RNAV 1 - DME/DME/IRU or GPS.  
From HEYDR - GPS.  
RADAR required.

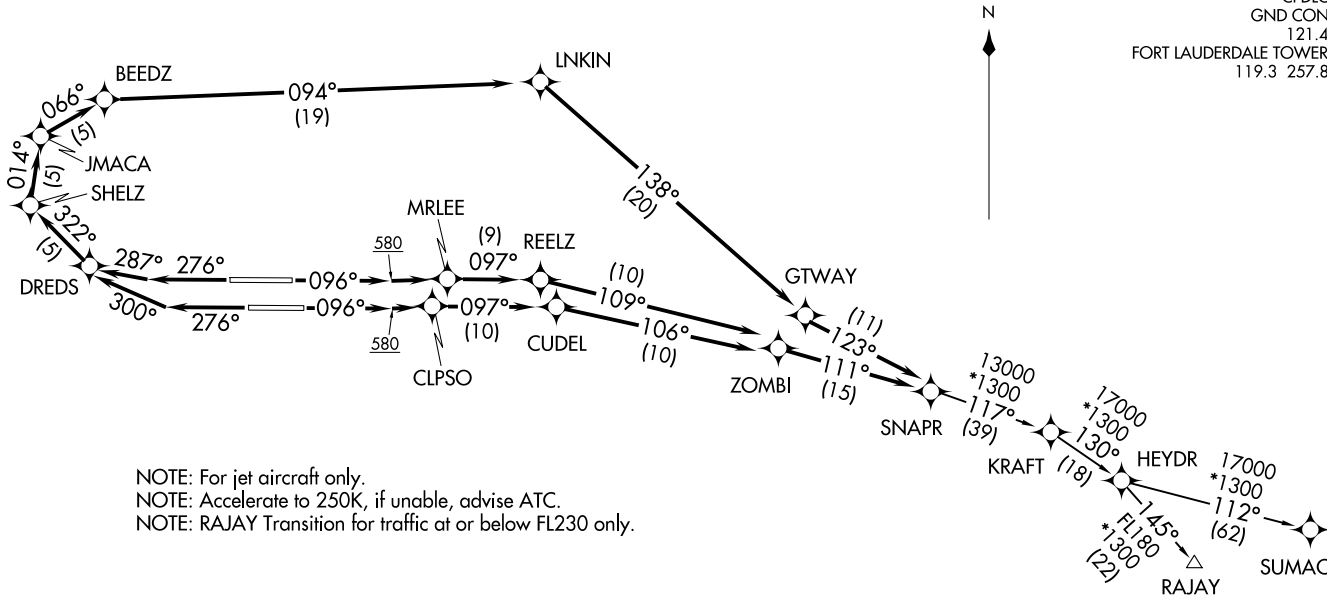
MIAMI DEP CON  
126.05 251.1 (W)  
126.85 290.325 (E)  
D-ATIS  
135.0  
CLNC DEL  
128.4  
CPDLC  
GND CON  
121.4  
FORT LAUDERDALE TOWER  
119.3 257.8

(SNAPR2.SNAPR) 25331  
SNAPR TWO DEPARTURE (RNAV)

A1744 (FAA)  
FORT LAUDERDALE/HOLLYWOOD INTL (FLL)  
FORT LAUDERDALE, FLORIDA

SNAPR TWO DEPARTURE (RNAV)  
(SNAPR2.SNAPR) 19MAY22

FORT LAUDERDALE, FLORIDA  
FORT LAUDERDALE/HOLLYWOOD INTL (FLL)



NOTE: For jet aircraft only.  
NOTE: Accelerate to 250K, if unable, advise ATC.  
NOTE: RAJAY Transition for traffic at or below FL230 only.

TAKEOFF MINIMUMS  
Rwys 10L/R, 28L/R: Standard with minimum climb of 500' per NM to 580.

NOTE: Chart not to scale.

(NARRATIVE ON FOLLOWING PAGE)

# SNAPR TWO DEPARTURE (RNAV)



## DEPARTURE ROUTE DESCRIPTION

SEE ADDITIONAL REQUIREMENTS ON AAUP

TAKEOFF RUNWAY 10L: Climb on heading 096° to 580, then climb direct MRLEE, then on track 097° to REELZ, then on track 109° to ZOMBI, then on track 111° to SNAPR, thence. . . .

TAKEOFF RUNWAY 10R: Climb on heading 096° to 580, then climb direct CLPSO, then on track 097° to CUDEL, then on track 106° to ZOMBI, then on track 111° to SNAPR, thence. . . .

TAKEOFF RUNWAY 28L: Climb on heading 276° to intercept course 300° to DREDS, then on track 322° to SHELZ, then on track 014° to JMACA, then on track 066° to BEEDZ, then on track 094° to LNKIN, then on track 138° to GTWAY, then on track 123° to SNAPR, thence. . . .

TAKEOFF RUNWAY 28R: Climb on heading 276° to intercept course 287° to DREDS, then on track 322° to SHELZ, then on track 014° to JMACA, then on track 066° to BEEDZ, then on track 094° to LNKIN, then on track 138° to GTWAY, then on track 123° to SNAPR, thence. . . .

. . . (transition) maintain 4000. Expect clearance to filed altitude ten minutes after departure.

RAJAY TRANSITION (SNAPR2.RAJAY)

SUMAC TRANSITION (SNAPR2.SUMAC)

SE-3, 16 APR 2026 to 14 MAY 2026

SE-3, 16 APR 2026 to 14 MAY 2026