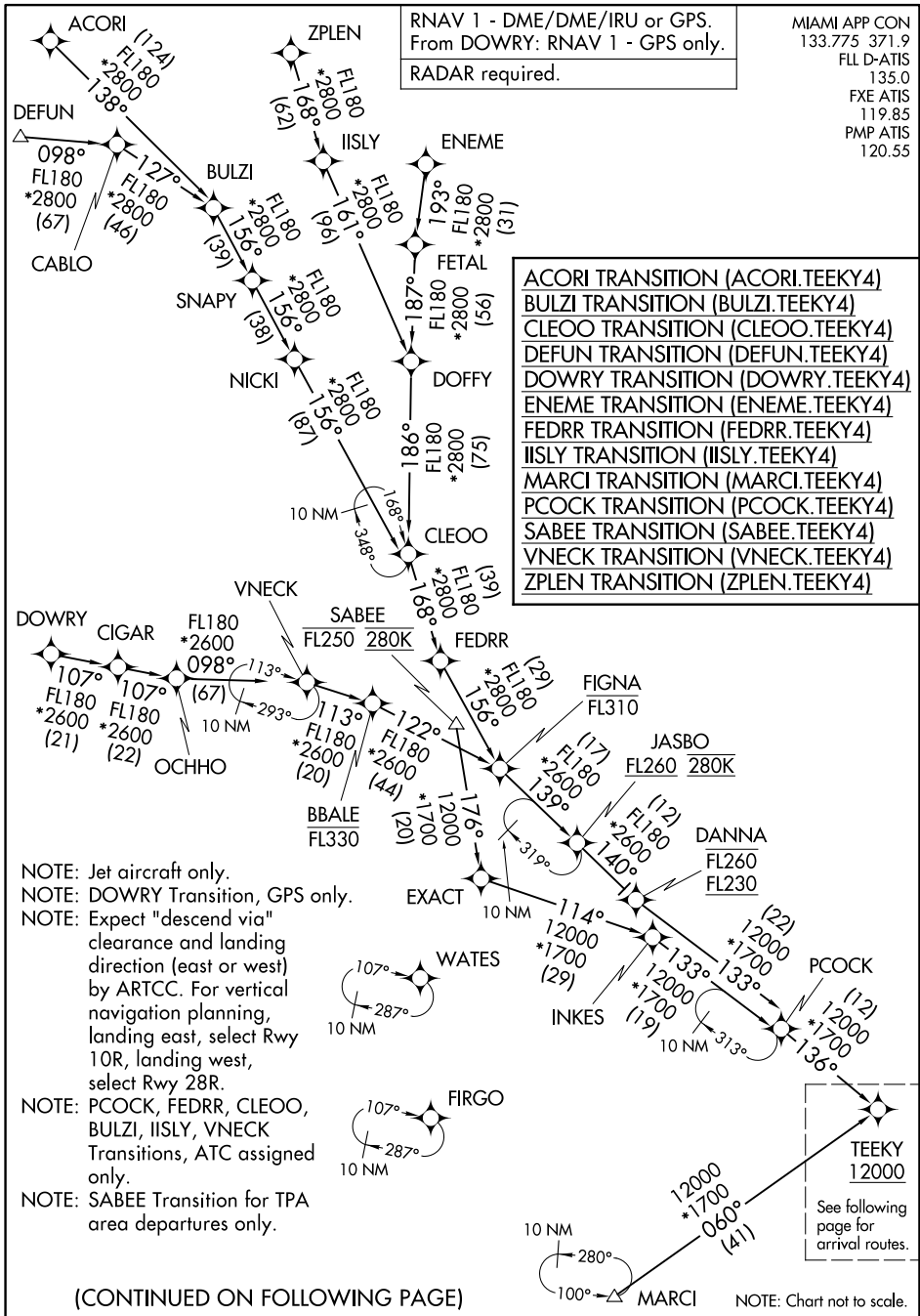


# TEEKY FOUR ARRIVAL (RNAV) Transition Routes FORT LAUDERDALE, FLORIDA



SE-3, 16 APR 2026 to 14 MAY 2026

SE-3, 16 APR 2026 to 14 MAY 2026

(CONTINUED ON FOLLOWING PAGE)

# TEEKY FOUR ARRIVAL (RNAV) Transition Routes FORT LAUDERDALE, FLORIDA

See following page for arrival routes.

NOTE: Chart not to scale.

TEEKY FOUR ARRIVAL (RNAV)  
(TEEKY, TEEKY4) 19MAR26

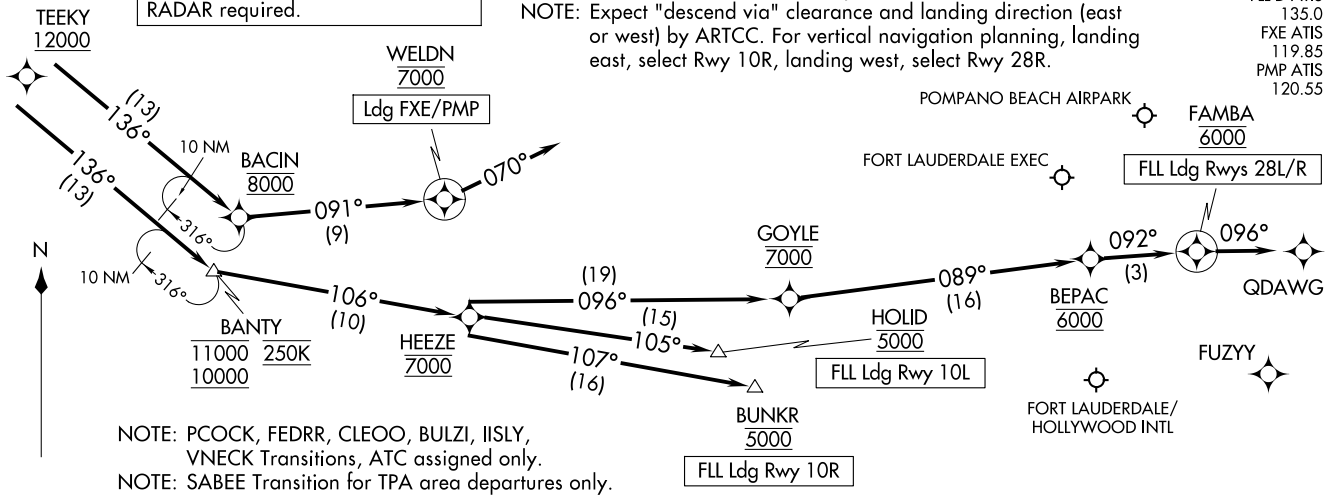
Arrival Routes

FORT LAUDERDALE, FLORIDA

RNAV 1 - DME/DME/IRU or GPS.  
From DOWRY: RNAV 1 - GPS only.  
RADAR required.

NOTE: Jet aircraft only.  
NOTE: DOWRY Transition, GPS only.  
NOTE: Expect "descend via" clearance and landing direction (east or west) by ARTCC. For vertical navigation planning, landing east, select Rwy 10R, landing west, select Rwy 28R.

MIAMI APP CON  
133.775 371.9  
FLL D-ATIS  
135.0  
FXE ATIS  
119.85  
PMP ATIS  
120.55



NOTE: PCOCK, FEDRR, CLEOO, BULZI, IISLY, VNECK Transitions, ATC assigned only.  
NOTE: SABEE Transition for TPA area departures only.

NOTE: Chart not to scale.

ARRIVAL ROUTE DESCRIPTION

FLL: From TEEKY on track 136° to cross BANTY between 10000 and 11000 and at 250K, then on track 106° to cross HEENZE at 7000.

LANDING FLL RUNWAY 10L: From HEENZE on track 105° to cross HOLID at 5000. Expect ILS or LOC Rwy 10L approach.

LANDING FLL RUNWAY 10R: From HEENZE on track 107° to cross BUNKR at 5000. Expect ILS or LOC Rwy 10R approach.

LANDING FLL RUNWAYS 28L/R: From HEENZE on track 096° to cross GOYLE at 7000, then on track 089° to cross BEPAC at 6000, then on track 092° to cross FAMBA at 6000, then on track 096°.

LANDING FXE/PMP: From TEEKY on track 136° to cross BACIN at 8000, then on track 091° to cross WELDN at 7000, then on track 070°.

TEEKY FOUR ARRIVAL (RNAV)  
(TEEKY, TEEKY4) 26078

Arrival Routes

FORT LAUDERDALE, FLORIDA

AL-744 (FAA)