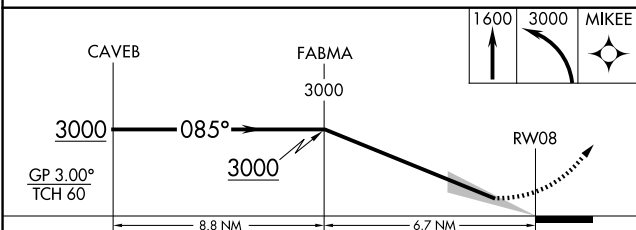
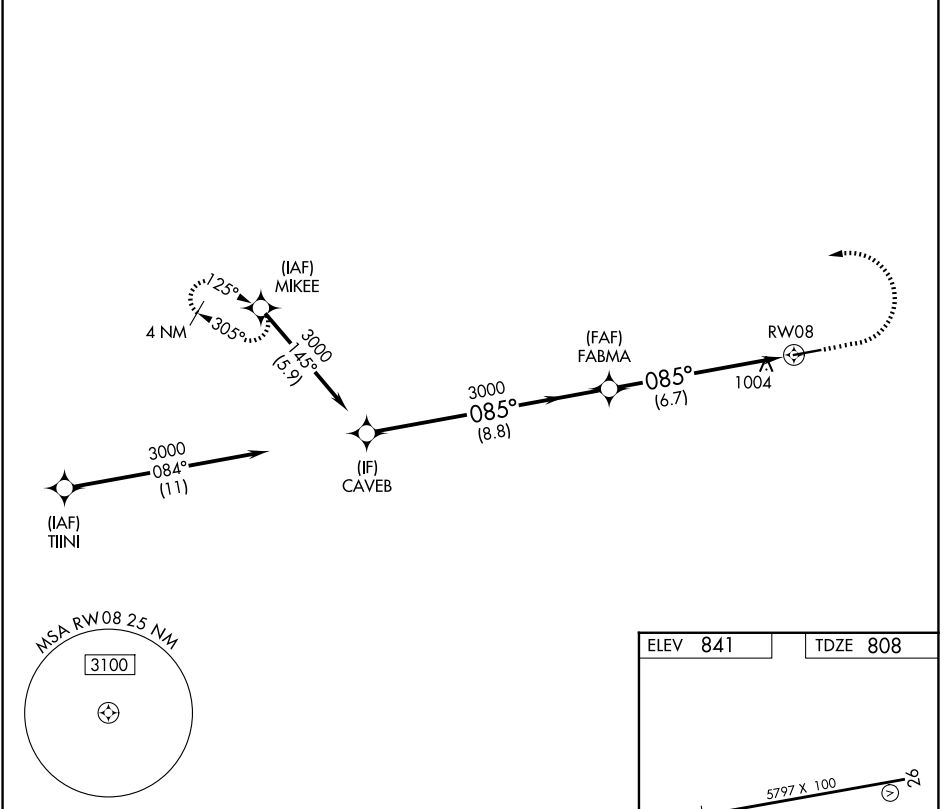


APP CRS	Rwy Ldg	5797
085°	TDZE	808
	Apt Elev	841

RNAV (RNP) Z RWY 8

FULTON COUNTY EXEC/CHARLIE BROWN FLD (FTY)

RNP AR APCH.		MALS R	MISSED APPROACH: Climb to 1600 then climbing left turn to 3000 direct MIKEE and hold.
<p>▼ For uncompensated Baro-VNAV systems, procedure NA below -11°C or above 54°C. Ridge with trees to 1299' MSL between FAF and runway threshold may be obscured by clouds even with airfield ceiling at or above procedure minimums.</p>			
ATIS	ATLANTA APP CON	FULTON COUNTY TOWER	GND CON
120.175	121.0 268.7	118.45 257.8	121.7 348.6



ELEV 841	TDZE 808
----------	----------

CATEGORY	A	B	C	D
RNP 0.30 DA		1401-1¼	593 (600-1¼)	

AUTHORIZATION REQUIRED

HIRL Rwy 8-26
REIL Rwy 26

SE-4, 16 APR 2026 to 14 MAY 2026

SE-4, 16 APR 2026 to 14 MAY 2026