

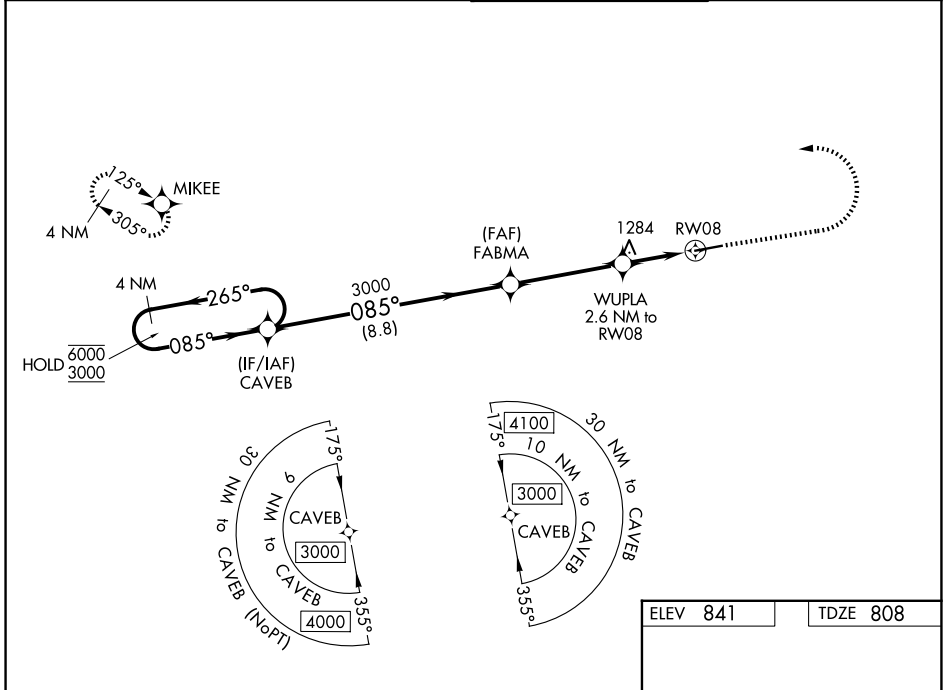
WAAS CH <b>65804</b> <b>W08A</b>	APP CRS <b>085°</b>	Rwy Ldg TDZE Apt Elev	<b>5797</b> <b>808</b> <b>841</b>
--	------------------------	-----------------------------	---

# RNAV (GPS) Y RWY 8

FULTON COUNTY EXEC/CHARLIE BROWN FLD (F'TY)

RNP APCH - GPS.	MALSRL 	MISSED APPROACH: Climb to 1600 then climbing left turn to 3000 direct MIKEE and hold.
<p><b>⚠</b> Rwy 8 helicopter visibility reduction below 3/4 SM NA. For uncompensated Baro-VNAV systems, LNAV/VNAV NA below -11°C or above 54°C. For inop ALS, increase LNAV/VNAV all Cats visibility to 2 1/2 SM and LNAV Cat C/D to 2 SM. Ridge with trees to 1299' MSL between FAF and runway threshold may be obscured by clouds even with airfield ceiling at or above procedure minimums.</p>		

ATIS <b>120.175</b>	ATLANTA APP CON <b>121.0 268.7</b>	FULTON COUNTY TOWER <b>118.45 257.8</b>	GND CON <b>121.7 348.6</b>
------------------------	---------------------------------------	--	-------------------------------



SE-4, 16 APR 2026 to 14 MAY 2026

SE-4, 16 APR 2026 to 14 MAY 2026

4 NM Holding Pattern		CAVEB	FABMA	1600	3000	MIKEE
6000 ← 265°		→ 085°	3000	WUPLA 2.6 NM to RW08	*2.1 NM to RW08	*LNAV only
3000		085°	3000	3000	2.1 NM	RW08
GP 3.00		8.8 NM	4.1 NM	0.5	2.1 NM	
TCH 60						
CATEGORY	A	B	C	D		
LPV DA		1058-1/2	250 (300-1/2)			
LNAV/VNAV DA		1637-1 7/8	829 (800-1 7/8)			
LNAV MDA	1540-1/2	732 (700-1/2)	1540-1 5/8	732 (700-1 5/8)		
CIRCLING	1540-1	699 (700-1)	1740-2 3/4 899 (900-2 3/4)	1740-3 899 (900-3)	HIRL Rwy 8-26 REIL Rwy 26	