

APP CRS	Rwy Ldg	<b>7959</b>
<b>126°</b>	TDZE	<b>597</b>
	Apt Elev	<b>597</b>

# RNAV (RNP) Z RWY 12

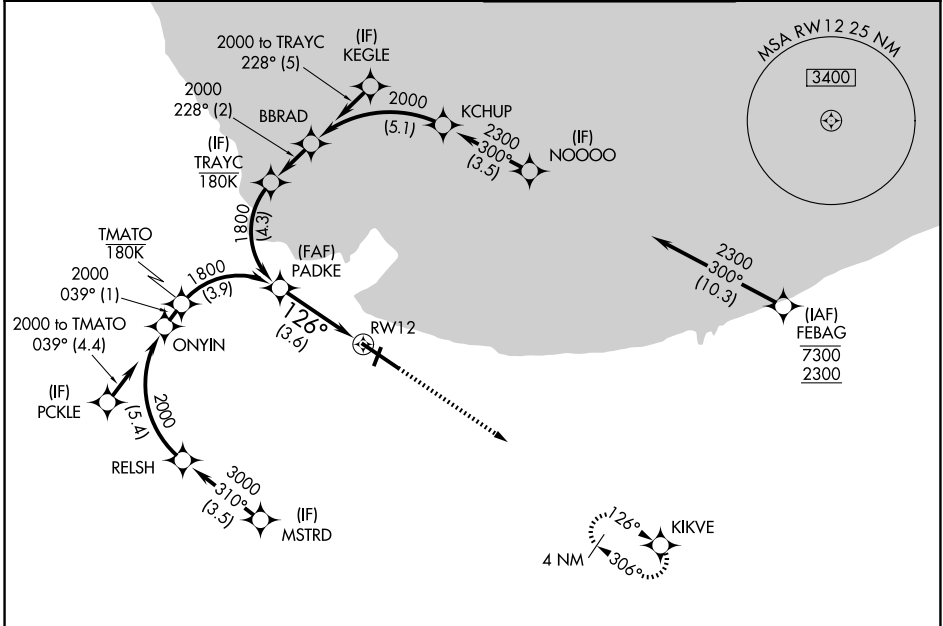
GARY/CHICAGO INTL (GYY)

RNP AR APCH - GPS.

**▽** For uncompensated Baro-VNAV systems, procedure NA below -16°C or above 54°C.

MISSED APPROACH: Climb to 2400 direct KIKVE and hold.

D-ATIS <b>134.575</b>	CHICAGO APP CON <b>133.1 285.6</b>	GARY TOWER ★ <b>125.6 (CTAF) 0</b>	GND CON <b>121.9</b>
--------------------------	---------------------------------------	---------------------------------------	-------------------------

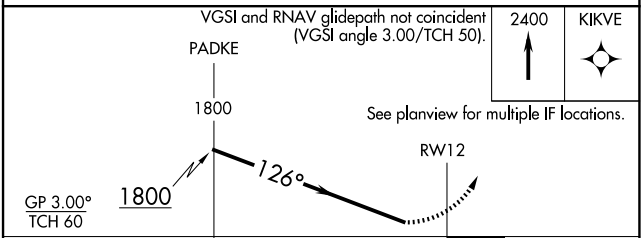


EC-2, 16 APR 2026 to 14 MAY 2026

EC-2, 16 APR 2026 to 14 MAY 2026

ELEV 597	<b>D</b>	TDZE 597
----------	----------	----------

REIL Rws 2, 12 and 20  
HIRL Rwy 12-30  
MIRL Rwy 2-20



CATEGORY	A	B	C	D
RNP 0.10 DA		913-7/8	316 (400-7/8)	
RNP 0.30 DA		1043-1 3/8	446 (500-1 3/8)	

**AUTHORIZATION REQUIRED**