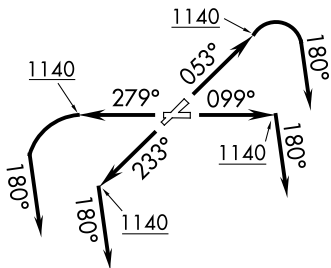


CAVVS FIVE DEPARTURE (RNAV)

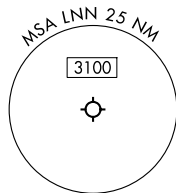
CLEVELAND DEP CON
125.35 346.325
AWOS-3PT 119.225
CTAF 122.725

**TOP ALTITUDE:
ASSIGNED BY ATC**



RNAV 1 - DME/DME/IRU or GPS.

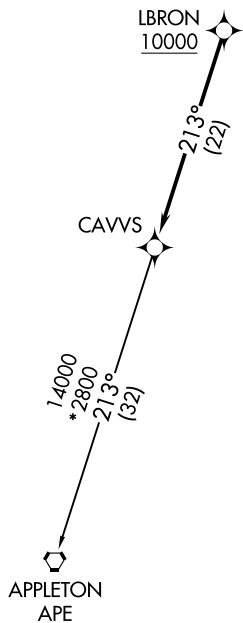
RADAR required.



TAKEOFF MINIMUMS:

Rwys 5, 10, 23, 28: Standard with minimum climb of 500' per NM to 1140.

EC-2, 16 APR 2026 to 14 MAY 2026



NOTE: Chart not to scale.



DEPARTURE ROUTE DESCRIPTION

TAKEOFF RUNWAY 5: Climb on heading 053° to 1140, then right turn heading 180° or as assigned by ATC for RADAR vectors to cross LBRON at or above 10000, thence....

TAKEOFF RUNWAY 10: Climb on heading 099° to 1140, then on heading 180° or as assigned by ATC for RADAR vectors to cross LBRON at or above 10000, thence....

TAKEOFF RUNWAY 23: Climb on heading 233° to 1140, then on heading 180° or as assigned by ATC for RADAR vectors to cross LBRON at or above 10000, thence....

TAKEOFF RUNWAY 28: Climb on heading 279° to 1140, then left turn heading 180° or as assigned by ATC for RADAR vectors to cross LBRON at or above 10000, thence....

....on track 213° to CAVVS, then on (transition).

Maintain ATC assigned altitude, expect filed altitude ten minutes after departure.

APPLETON TRANSITION (CAVVS5.APE)

EC-2, 16 APR 2026 to 14 MAY 2026

CAVVS FIVE DEPARTURE (RNAV)

(CAVVS5.CAVVS) 27NOV25