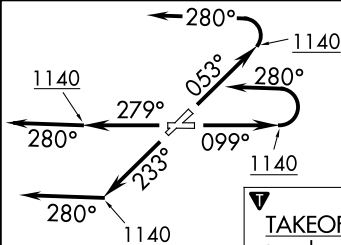


GTLKE FIVE DEPARTURE (RNAV)

**TOP ALTITUDE:
ASSIGNED BY ATC**

CLEVELAND DEP CON
125.35 346.325
AWOS-3PT
119.225
CTAF
122.725



DEPARTURE ROUTE DESCRIPTION

TAKEOFF RUNWAY 5: Climb on heading 053° to 1140, then left turn heading 280° or as assigned by ATC for RADAR vectors to cross AYYLE at or above 9000, thence....

TAKEOFF RUNWAY 10: Climb on heading 099° to 1140, then left turn heading 280° or as assigned by ATC for RADAR vectors to cross AYYLE at or above 9000, thence....

TAKEOFF RUNWAY 23: Climb on heading 233° to 1140, then on heading 280° or as assigned by ATC for RADAR vectors to cross AYYLE at or above 9000, thence....

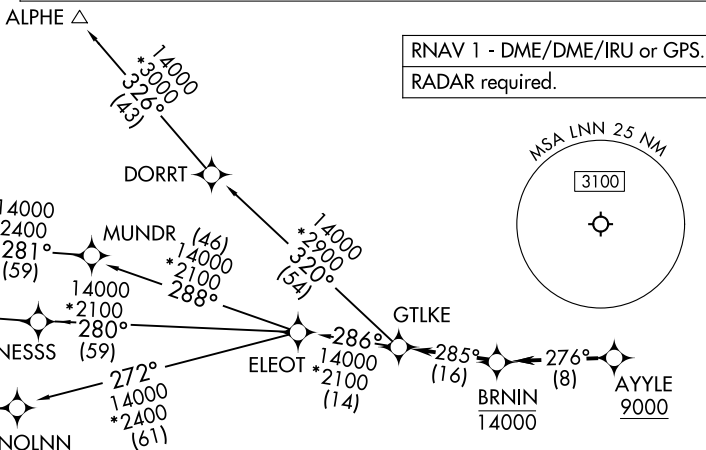
TAKEOFF RUNWAY 28: Climb on heading 279° to 1140, then on heading 280° or as assigned by ATC for RADAR vectors to cross AYYLE at or above 9000, thence....

...on track 276° to cross BRNNIN at or below 14000, then on track 285° to GTLKE then on (transition). Maintain ATC assigned altitude, expect filed altitude ten minutes after departure.

- ALPHE TRANSITION (GTLKE5.ALPHE)
- BAGEL TRANSITION (GTLKE5.BAGEL)
- DAIFE TRANSITION (GTLKE5.DAIFE)
- YABRO TRANSITION (GTLKE5.YABRO)

EC-2, 16 APR 2026 to 14 MAY 2026

EC-2, 16 APR 2026 to 14 MAY 2026



RNAV 1 - DME/DME/IRU or GPS.
RADAR required.

TAKEOFF MINIMUMS:
Rwys 5, 10, 23, 28: Standard with minimum climb of 500' per NM to 1140.

NOTE: Chart not to scale.

GTLKE FIVE DEPARTURE (RNAV)

(GTLKE5.GTLKE) 27NOV25