

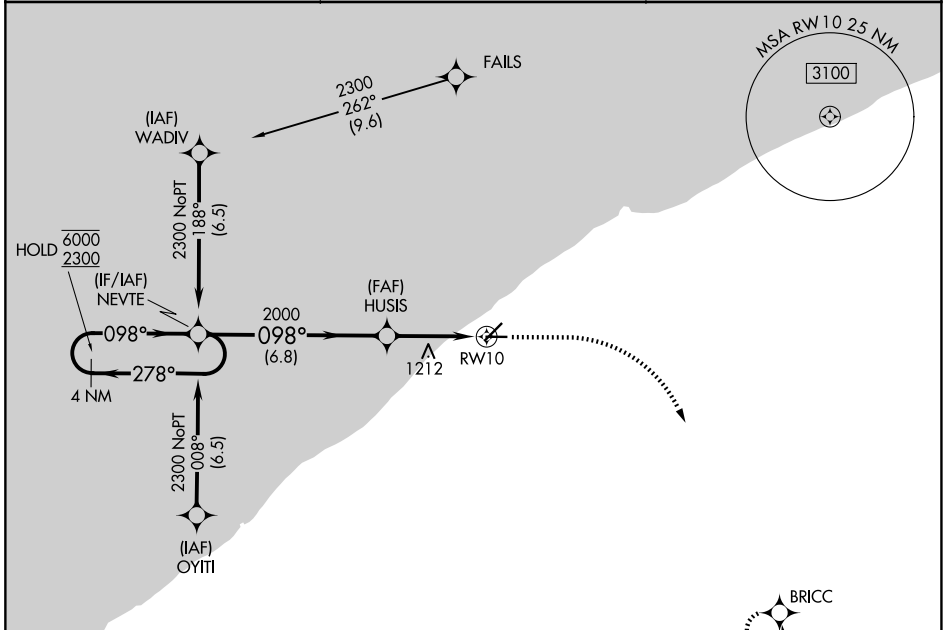
APP CRS	Rwy Ldg	<b>4272</b>
<b>098°</b>	TDZE	<b>625</b>
	Apt Elev	<b>626</b>

# RNAV (GPS) RWY 10

LAKE COUNTY EXEC (LNN)

RNP APCH - GPS.	MISSED APPROACH: Climb to 1800 then climbing right turn to 2900 direct BRICC and hold.
▼ ▲ Rwy 10 helicopter visibility reduction below 3/4 SM NA.	

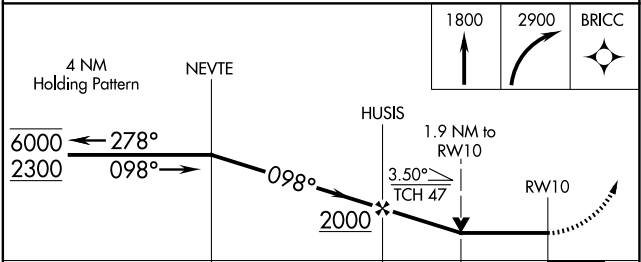
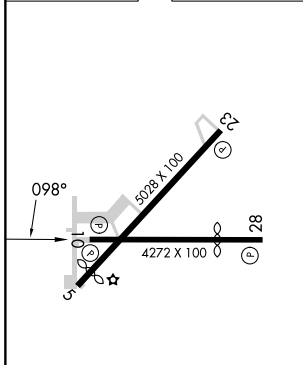
AWOS-3PT <b>119.225</b>	CLEVELAND APP CON <b>125.35 346.325</b>	UNICOM <b>122.725 (CTAF) 0</b>
----------------------------	--	-----------------------------------



EC-2, 16 APR 2026 to 14 MAY 2026

EC-2, 16 APR 2026 to 14 MAY 2026

ELEV 626	TDZE 625
----------	----------



CATEGORY	A	B	C	D
LNNAV MDA	1360-1	735 (800-1)	1360-2 735 (800-2)	NA
CIRCLING	1360-1	734 (800-1)	1520-2 3/4 894 (900-2 3/4)	NA