

ZAAPA SIX DEPARTURE (RNAV)

EC-2, 16 APR 2026 to 14 MAY 2026

<p>CLEVELAND DEP CON 125.35 346.325 AWOS-3PT 119.225 CTAF 122.725</p>	<p>RNAV 1 - DME/DME/IRU or GPS. RADAR required.</p>	<p>TOP ALTITUDE: ASSIGNED BY ATC</p>	
---	---	---	--

TAKEOFF MINIMUMS:
Rwys 5, 10, 23, 28: Standard with minimum climb of 500' per NM to 1140.

DEPARTURE ROUTE DESCRIPTION

TAKEOFF RUNWAY 5: Climb on heading 053° to 1140, then left turn heading 280° or as assigned by ATC for RADAR vectors to cross MOHUM at or above 9000, thence....

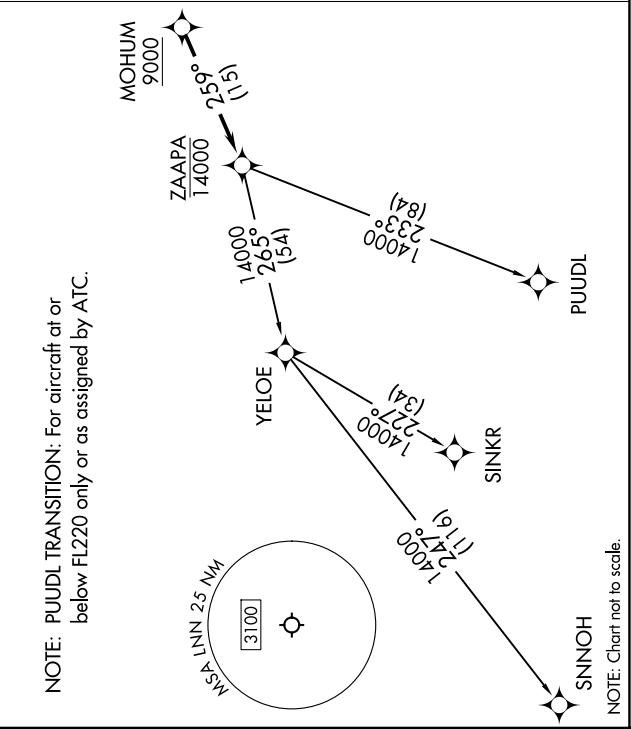
TAKEOFF RUNWAY 10: Climb on heading 099° to 1140, then left turn heading 280° or as assigned by ATC for RADAR vectors to cross MOHUM at or above 9000, thence....

TAKEOFF RUNWAY 23: Climb on heading 233° to 1140, then on heading 280° or as assigned by ATC for RADAR vectors to cross MOHUM at or above 9000, thence....

TAKEOFF RUNWAY 28: Climb on heading 279° to 1140, then on heading 280° or as assigned by ATC for RADAR vectors to cross MOHUM at or above 9000, thence....

....on track 259° to cross ZAAPA at or below 14000, then on (transition). Maintain ATC assigned altitude, expect filed altitude ten minutes after departure.

PUIIDL TRANSITION (ZAAPA6.PUIIDL)
SINKR TRANSITION (ZAAPA6.SINKR)
SNNOH TRANSITION (ZAAPA6.SNNOH)



ZAAPA SIX DEPARTURE (RNAV)

EC-2, 16 APR 2026 to 14 MAY 2026