

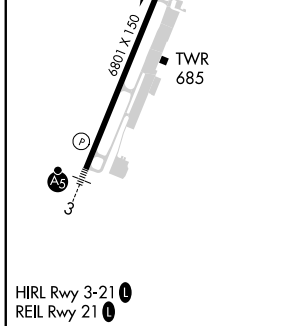
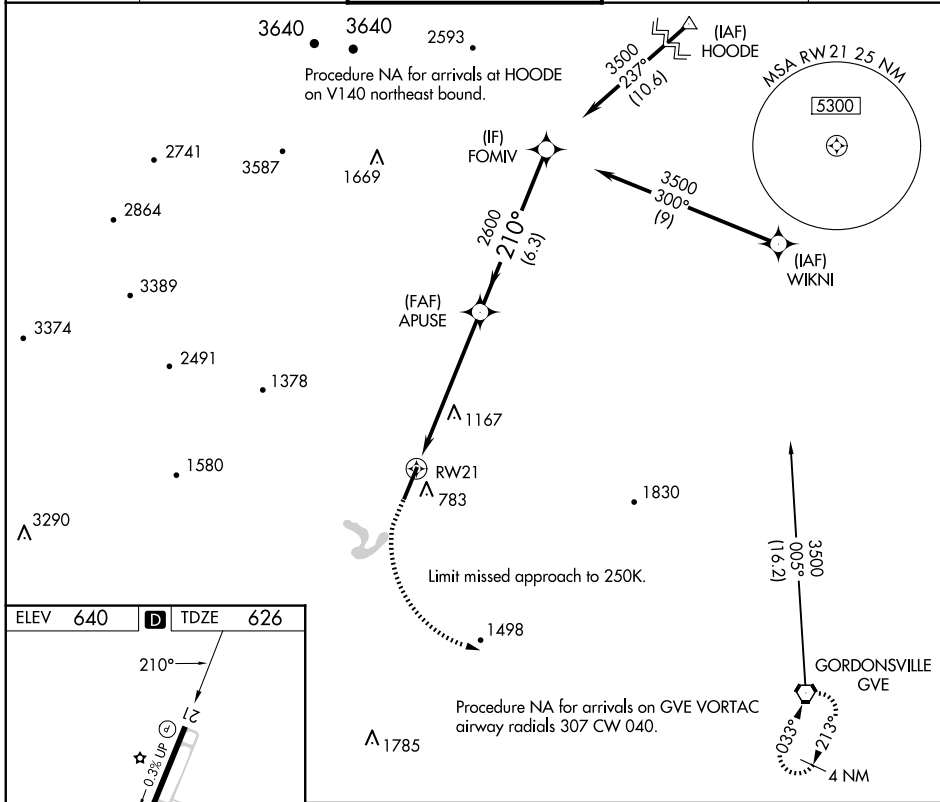
WAAS CH 45602 W21B	APP CRS 210°	Rwy ldg TDZE Apt Elev	6801 626 640
--	------------------------	-----------------------------	---

RNAV (GPS) Z RWY 21

CHARLOTTESVILLE-ALBEMARLE (CHO)

RNP APCH.	<p>Baro-VNAV NA when using Staunton/Waynesboro/Harrisonburg altimeter setting. For uncompensated Baro-VNAV systems, procedure NA below -16°C or above 54°C.</p> <p>When local altimeter setting not received, use Staunton/Waynesboro/Harrisonburg altimeter setting and increase all DA 130 feet and LPV visibility 1/8 mile.</p>	MISSED APPROACH: Climb to 1100, then climbing left turn to 4000 direct GVE VORTAC and hold.
-----------	--	---

ATIS 118.425	POTOMAC APP CON 132.85 323.125	CHARLOTTESVILLE TOWER ★ 124.5 (CTAF) 0 338.275	GND CON 121.9 338.275	UNICOM 122.95
------------------------	--	--	---------------------------------	-------------------------



1100	4000	GVE	FOMIV	
↑	↪	⬠		
RWY 21	APUSE 2600	210°	3500	
		2600	GP 3.00° TCH 50	
	6.1 NM	6.3 NM		
CATEGORY	A	B	C	D
LPV DA		826-1	200 (200-1)	
LNAV/VNAV DA		1588-4	962 (1000-4)	

NE-3, 16 APR 2026 to 14 MAY 2026

NE-3, 16 APR 2026 to 14 MAY 2026