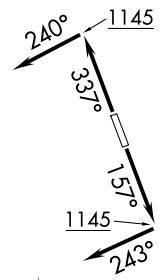


RNAV 1 - DME/DME/IRU or GPS required.
RADAR required for non-GPS equipped aircraft.

**TOP ALTITUDE:
ASSIGNED BY ATC**

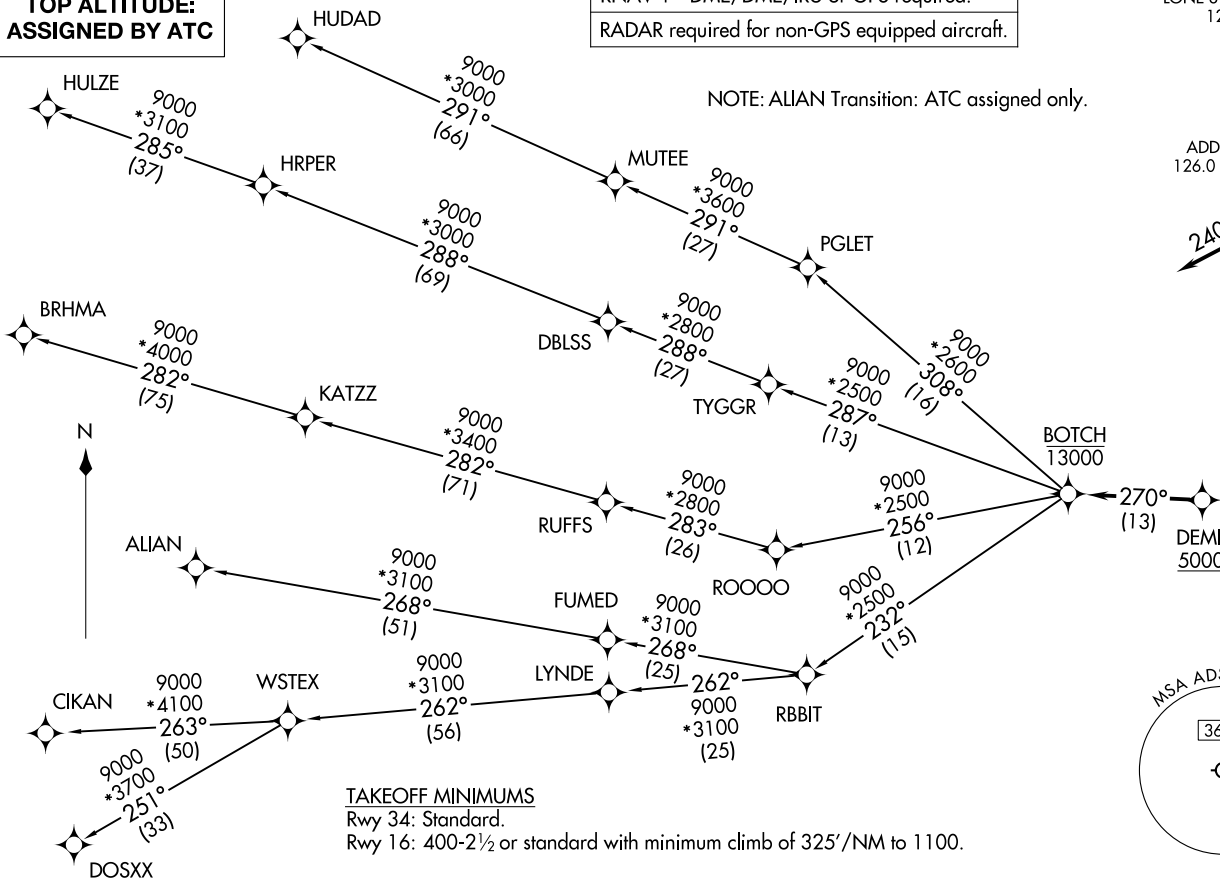
LONE STAR DEP CON
124.3 282.275
ATIS
133.4
CLNC DEL
119.55
GND CON
121.6
ADDISON TOWER*
126.0 (CTAF) 239.0

NOTE: ALIAN Transition: ATC assigned only.



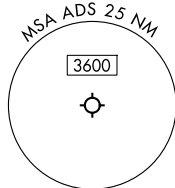
BOTCH ONE DEPARTURE (RNAV)
(BOTCH1 .BOTCH) 17APR25

(BOTCH1 .BOTCH) 25107
AL788 (FAA)



TAKEOFF MINIMUMS

Rwy 34: Standard.
Rwy 16: 400-2½ or standard with minimum climb of 325'/NM to 1100.



(CONTINUED ON FOLLOWING PAGE)

NOTE: Chart not to scale.

DALLAS, TEXAS
ADDISON (ADS)
(ADDS)

ADDISON (ADS)
DALLAS, TEXAS

BOTCH ONE DEPARTURE (RNAV)



DEPARTURE ROUTE DESCRIPTION

TAKEOFF RUNWAY 16: Climb on heading 157° to 1145, then on heading 243° or as assigned by ATC, for vectors to cross DEMII at or above 5000, thence. . .

TAKEOFF RUNWAY 34: Climb on heading 337° to 1145, then on heading 240° or as assigned by ATC, for vectors to cross DEMII at or above 5000, thence. . .

. . . on track 270° to cross BOTCH at or below 13000, then on (transition). Maintain ATC assigned altitude, expect filed altitude 10 minutes after departure.

ALIAN TRANSITION (BOTCH1.ALIAN)

BRHMA TRANSITION (BOTCH1.BRHMA)

CIKAN TRANSITION (BOTCH1.CIKAN)

DOSXX TRANSITION (BOTCH1.DOSXX)

HUDAD TRANSITION (BOTCH1.HUDAD)

HULZE TRANSITION (BOTCH1.HULZE)

WSTEX TRANSITION (BOTCH1.WSTEX)

SC-2, 16 APR 2026 to 14 MAY 2026

SC-2, 16 APR 2026 to 14 MAY 2026