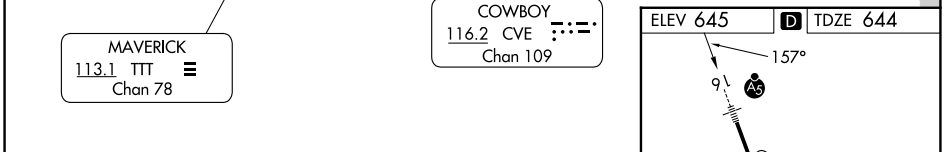
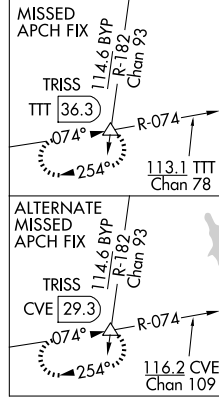
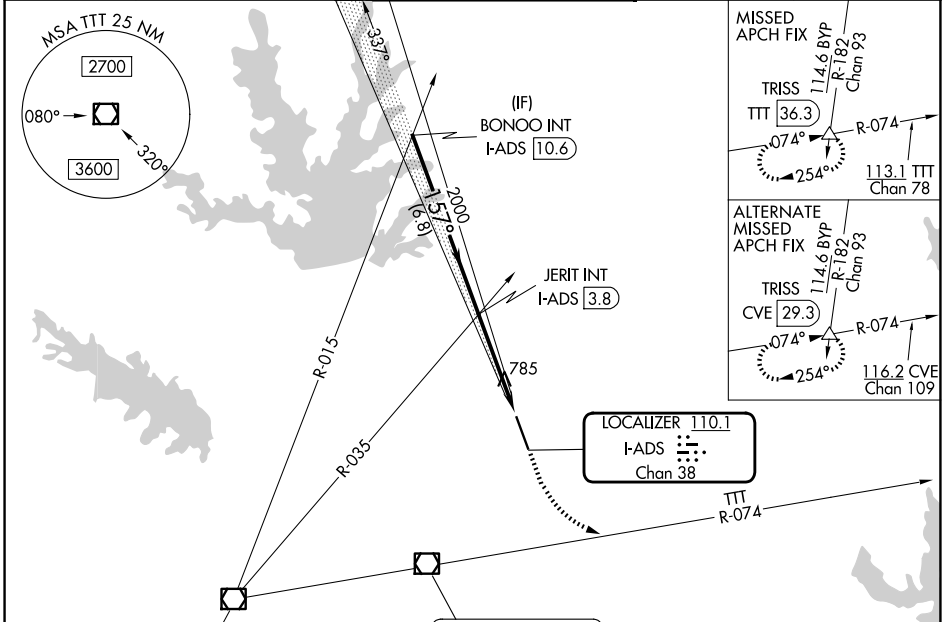


LOC/DME I-ADS 110.1 Chan 38	APP CRS 157°	Rwy Ldg 6224 TDZE 644 Apt Elev 645
---	------------------------	---

ILS or LOC RWY 16

ADDISON (ADS)

RADAR required for procedure entry.		MALSR 	MISSED APPROACH: Climb to 1500 then climbing left turn to 3000 on heading 107° and TTT VOR/DME R-074 to TRISS INT/TTT 36.3 DME and hold.		
ATIS 133.4	LONE STAR APP CON 124.3 282.275	ADDISON TOWER ★ 126.0 (CTAF) 239.0	GND CON 121.6	UNICOM 122.95	



BONOOC INT I-ADS (10.6)	JERIT INT I-ADS (3.8)	1500	3000	TTT R-074	TRISS
2000		hdg 107°			
GS 3.00° TCH 52		I-ADS (0.8)	I-ADS DME ANTENNA	I-ADS (0.3)	
6.8 NM		3 NM		1.1 NM	
CATEGORY	A	B	C	D	
S-ILS 16	894-1/2			250 (300-1/2)	
S-LOC 16	1040-1/2	396 (400-1/2)	1040-5/8	396 (400-5/8)	
CIRCLING	1200-1	555 (600-1)	1280-1 3/4	1400-2 1/2	
			635 (700-1 3/4)	755 (800-2 1/2)	

ELEV 645	TDZE 644
REIL Rwy 34	
HIRL Rwy 16-34	
FAF to MAP 4.1 NM	
Knots	60 90 120 150 180
Min:Sec	4:06 2:44 2:03 1:38 1:22

SC-2, 16 APR 2026 to 14 MAY 2026

SC-2, 16 APR 2026 to 14 MAY 2026