

KINGDOM FIVE DEPARTURE  
(KING5.TTT) 17AR25

RADAR and DME required.

**TOP ALTITUDE:  
ASSIGNED BY ATC**

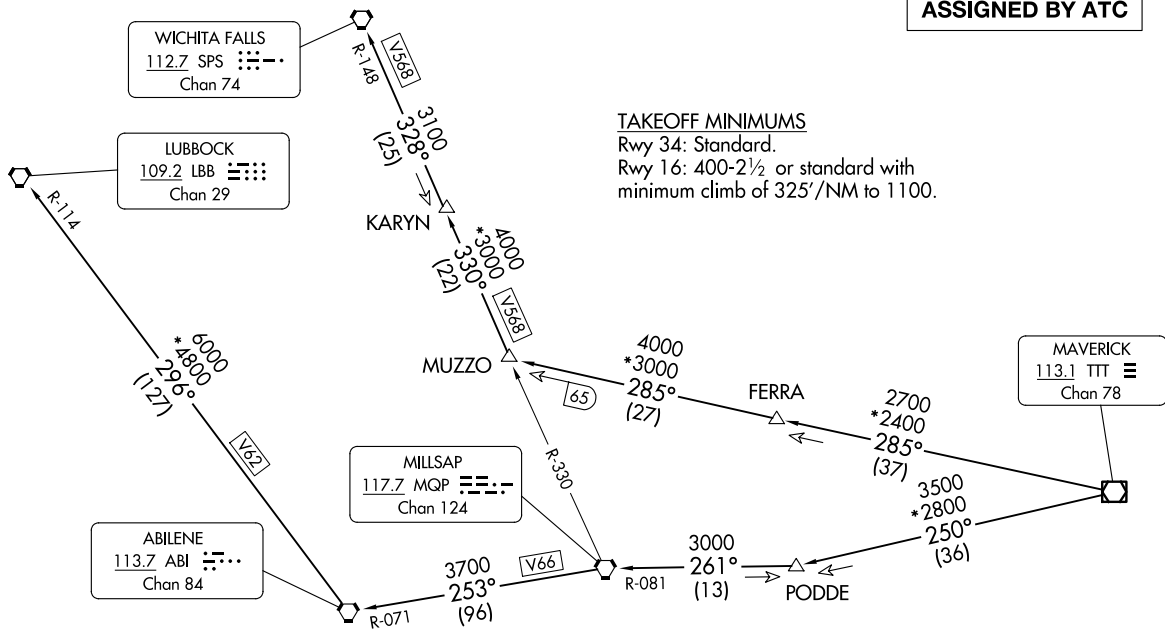
LONE STAR DEP CON  
124.3 282.275  
ATIS  
133.4  
CLNC DEL  
119.55  
GND CON  
121.6  
ADDISON TOWER \*  
126.0 (CTAF) 239.0

(KING5.TTT) 25107  
KINGDOM FIVE DEPARTURE

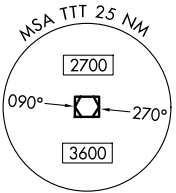
AL-768 (FAA)

ADDISON (ADS)  
DALLAS, TEXAS

TAKEOFF MINIMUMS  
Rwy 34: Standard.  
Rwy 16: 400-2½ or standard with  
minimum climb of 325'/NM to 1100.



- NOTE: LUBBOCK Transition: For all aircraft overflying the MQP VORTAC westbound or direct.
- NOTE: MILLSAP Transition: For all aircraft overflying the MQP VORTAC westbound or direct.
- NOTE: PODDE Transition: ATC assigned.
- NOTE: WICHITA FALLS Transition: For all aircraft landing within the Wichita Falls terminal area or overflying the SPS VORTAC.
- NOTE: For all aircraft requesting 17000 and below.



NOTE: Chart not to scale.

(CONTINUED ON FOLLOWING PAGE)

DALLAS, TEXAS  
ADDISON (ADS)

# KINGDOM FIVE DEPARTURE



## DEPARTURE ROUTE DESCRIPTION

When entering controlled airspace, fly assigned heading for RADAR vectors to appropriate route. Maintain ATC assigned altitude.

LUBBOCK TRANSITION (KING5.LBB): From over TTT VOR/DME on TTT R-250 to PODDE, then on MQP R-081 to MQP VORTAC, then on MQP R-253 and ABI R-071 to ABI VORTAC, then on ABI R-296 and LBB R-114 to LBB VORTAC.

MILLSAP TRANSITION (KING5.MQP): From over TTT VOR/DME on TTT R-250 to PODDE, then on MQP R-081 to MQP VORTAC.

PODDE TRANSITION (KING5.PODDE): From over TTT VOR/DME on TTT R-250 to PODDE.

WICHITA FALLS TRANSITION (KING5.SPS): From over TTT VOR/DME on TTT R-285 to MUZZO, then on MQP R-330 and SPS R-148 to KARYN, then on SPS R-148 to SPS VORTAC.

SC-2, 16 APR 2026 to 14 MAY 2026

SC-2, 16 APR 2026 to 14 MAY 2026