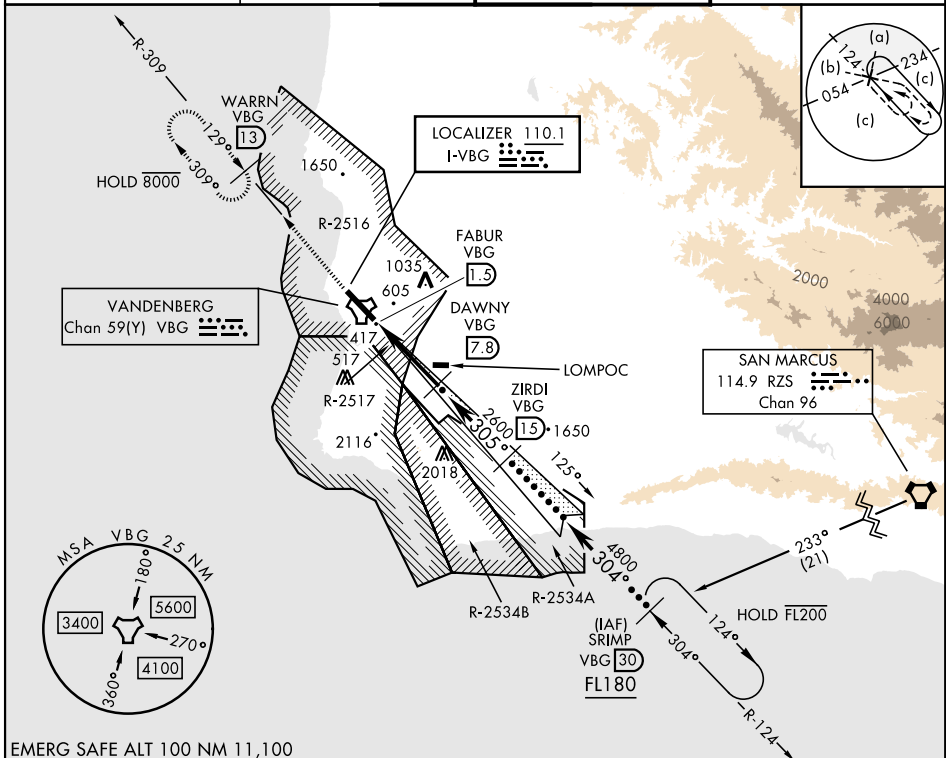


HI-ILS or LOC/DME RWY 30

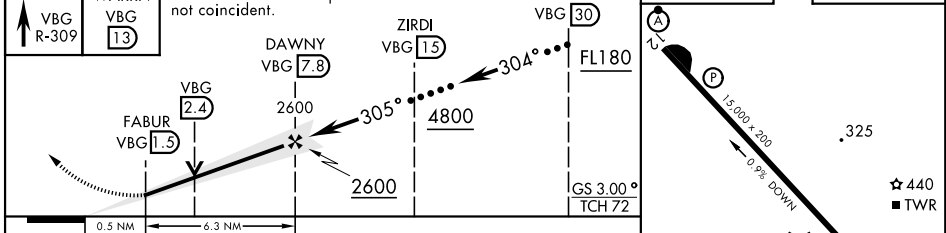
LOC I-VBG 110.1	APCH CRS 305°	Rwy Idg 15,000 TDZE 368 Arpt Elev 368	[USSF]	VANDENBERG SFB (KVBG)
---------------------------	-------------------------	--	--------	-----------------------

DME required	ALSF-2	MISSED APPROACH: Climb out VBG TACAN R-309 to WARRN and hold. Continue climb in hold maintain 4000.
▼ * When ALS inop, increase CAT CDE RVR to 40 and vis to ¾ mile. ** When ALS inop, increase CAT CDE vis to 1½ miles.		

ATIS 133.125 257.975	SANTA BARBARA APP/DEP CON ★ 124.15 327.8	TOWER ★ 124.95 (CTAF) 326.2	GND CON 121.75 275.8
--------------------------------	--	--	--------------------------------



4000	WARRN VBG 13	VGSI and ILS Glideslope not coincident.	SRIMP VBG 30	ELEV 368	TDZE 368
------	--------------	---	--------------	----------	----------



CATEGORY	C	D	E
S-ILS 30 *	568/24	200 (200-½)	
S-LOC 30 **	900/55	532 (600-1)	
CIRCLING	1020-1¾ 652 (700-1¾)	1180-2¾ 812 (900-2¾)	1560-3 1192 (1200-3)

HI-ILS or LOC/DME RWY 30

SW-3, 16 APR 2026 to 14 MAY 2026

SW-3, 16 APR 2026 to 14 MAY 2026