

# HI-TACAN RWY 30

TACAN VBG Chan <b>59(Y)</b>	APCH CRS <b>299°</b>	Rwy Idg <b>15,000</b> TDZE <b>368</b> Arpt Elev <b>368</b>
--------------------------------	-------------------------	--

[USSF]

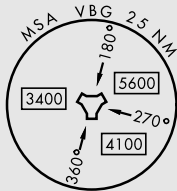
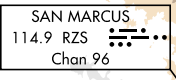
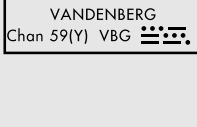
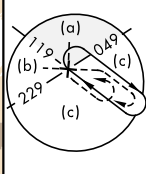
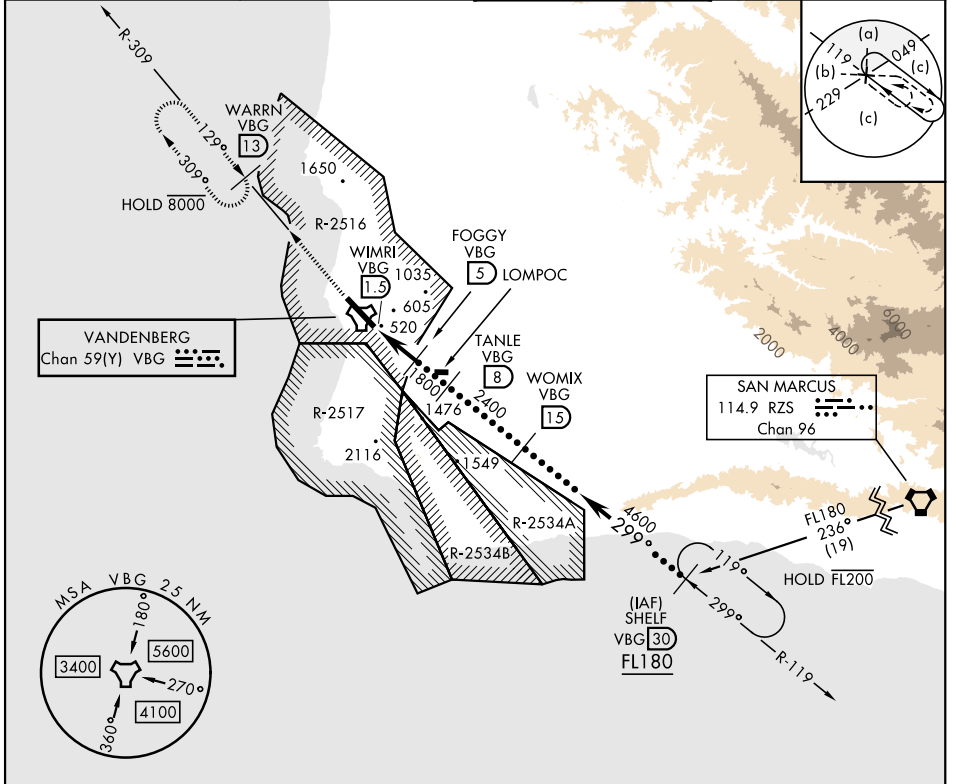
VANDENBERG SFB (KVBG)

▼ \*When ALS inop, increase vis to 1½ miles.



MISSED APPROACH: Climb out VBG TACAN R-309 to WARRN and hold. Continue climb in hold maintain 4000.

ATIS <b>133.125 257.975</b>	SANTA BARBARA APP/DEP CON ★ <b>124.15 327.8</b>	TOWER ★ <b>124.95</b> (CTAF) <b>326.2</b>	GND CON <b>121.75 275.8</b>
--------------------------------	---	--	--------------------------------

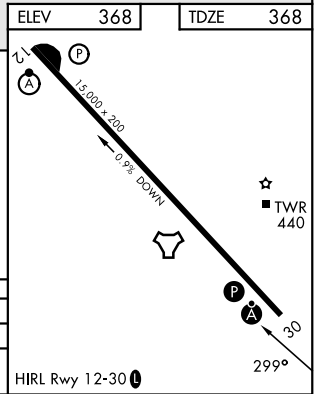


SW-3, 16 APR 2026 to 14 MAY 2026

SW-3, 16 APR 2026 to 14 MAY 2026

EMERG SAFE ALT 100 NM 11,100

4000 ↑ VBG R-309	WARRN VBG (13)	SHLF VBG (30)	
VBG TACAN	WIMRI VBG (1.5)	FOGGY VBG (5)	
	VBG (2.5)	TANLE VBG (8)	
	WOMIX VBG (15)	FL 180	
	1800	2400	
	3.20° TCH 71	4600	
	0.5	3.5 NM	
CATEGORY	C	D	
S-30*	920/60	552 (600-1½)	
CIRCLING	1020-1¾ 652 (700-1¾)	1180-2¾ 812 (900-2¾)	1560-3 1192 (1200-3)



# HI-TACAN RWY 30