

# TACAN RWY 12

TACAN VBG Chan <b>59(Y)</b>	APCH CRS <b>129°</b>	Rwy Ldg TDZE Arprt Elev
		<b>15,000</b> <b>265</b> <b>368</b>

[USSF]

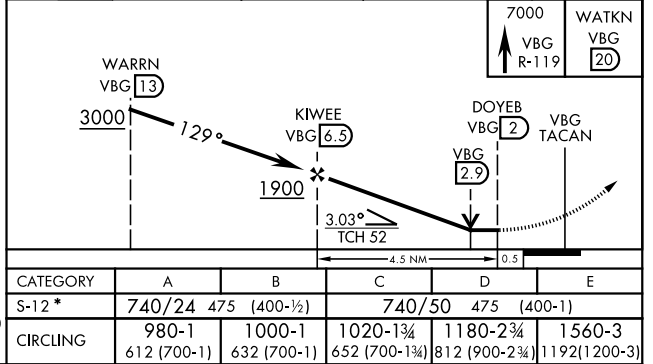
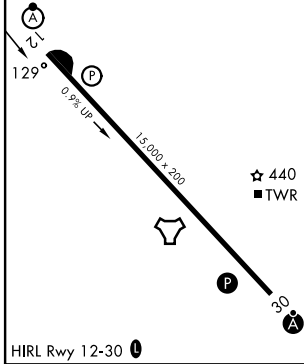
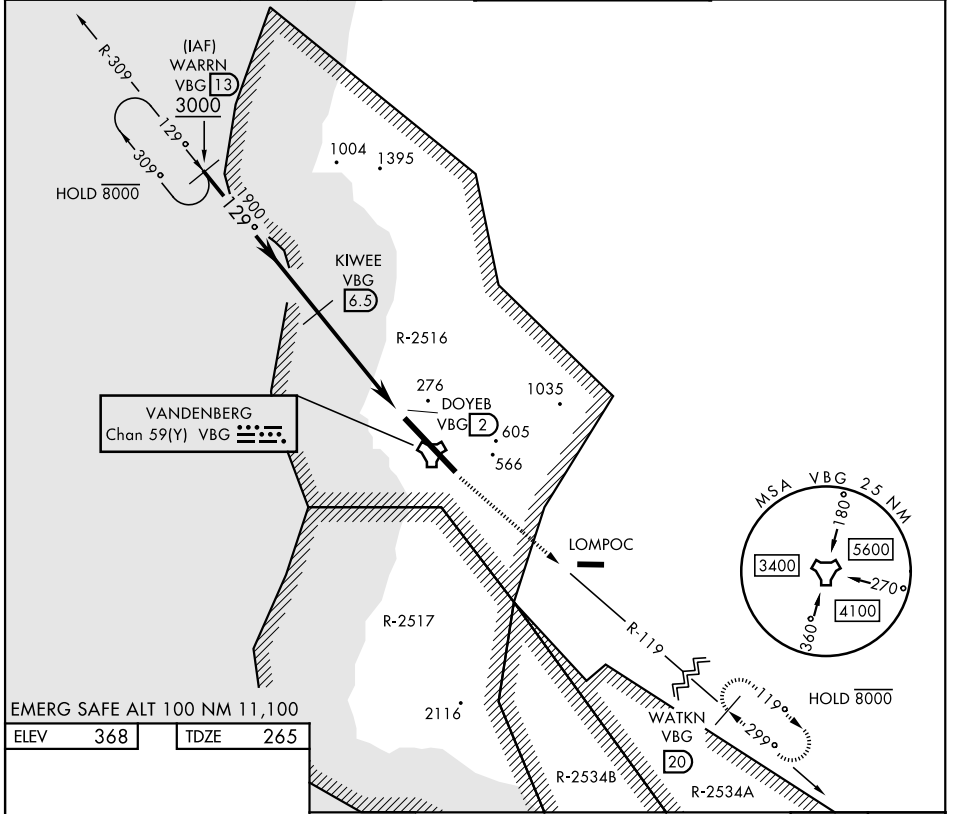
VANDENBERG SFB (KVBG)

⚠ \* When ALS inop, increase CAT AB RVR to 55 and vis to 1 mile; CAT CDE vis to 1 3/8 miles.

ALS-F-2  
A

MISSED APPROACH: Climb out VBG TACAN R-119 until 20 DME (WATKN) and hold. Continue climb in hold maintain 7000.

ATIS <b>133.125 257.975</b>	SANTA BARBARA APP CON★ <b>124.15 327.8</b>	TOWER★ <b>124.95</b> (CTAF) <b>326.2</b>	GND CON <b>121.75 275.8</b>
--------------------------------	--	---	--------------------------------



CATEGORY	A	B	C	D	E
S-12*	740/24	475 (400-1/2)	740/50	475 (400-1)	
CIRCLING	980-1 612 (700-1)	1000-1 632 (700-1)	1020-1 3/4 652 (700-1 3/4)	1180-2 3/4 812 (900-2 3/4)	1560-3 1192 (1200-3)

# TACAN RWY 12

SW-3, 16 APR 2026 to 14 MAY 2026

SW-3, 16 APR 2026 to 14 MAY 2026