

MARYSVILLE, CALIFORNIA

# HI-ILS or LOC Z RWY 15

LOC I-BAB <b>109.5</b>	APCH CRS <b>145°</b>	Rwy ldg TDZE Arprt Elev	<b>12,001</b> <b>113</b> <b>113</b>
---------------------------	-------------------------	-------------------------------	---

- (USAF)

BEALE AFB (KBAB)

RADAR or DME required

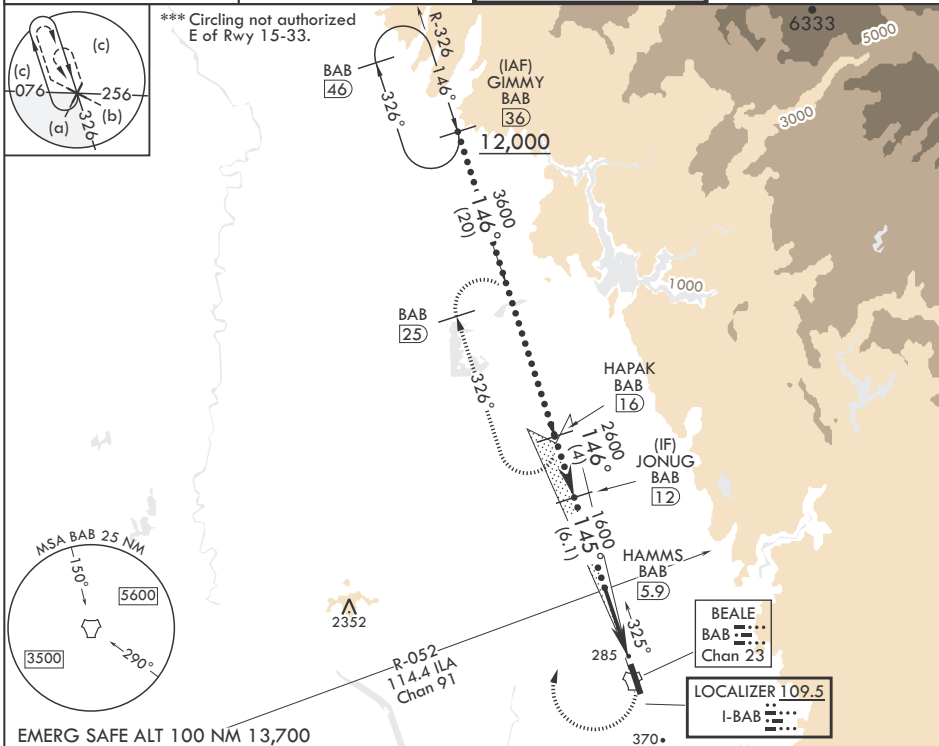
**V** \* When ALS inop, increase CAT CDE RVR to 40 and vis to 3/4 mile.  
\*\* When ALS inop, increase CAT CDE vis to 1 3/8 miles.

ALSF-1

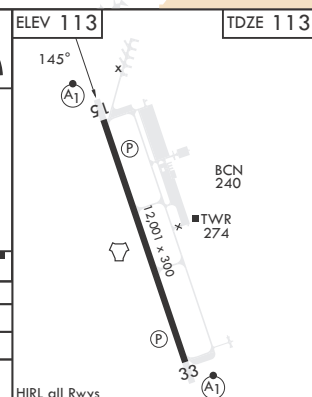
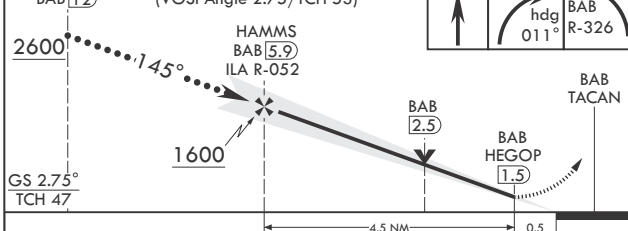


MISSED APPROACH: Climb to to 700 on heading 145°, then climbing right turn to 4400 heading 011° to intercept BAB R-326 to HAPAK and hold, continue climb in hold to 4400.

ATIS* <b>124.55 273.5</b>	NORCAL APP CON <b>125.4 259.1</b>	TOWER* <b>119.4 284.75</b>	GND CON <b>121.6 257.75</b>
------------------------------	--------------------------------------	-------------------------------	--------------------------------



EMERG SAFE ALT 100 NM 13,700



CATEGORY	C	D	E
S-ILS 15*	313/24	200	(200-1/2)
S-LOC 15**	600/50	487	(500-1)
<b>C</b> CIRCLING***	600-1 1/2 487 (500-1 1/2)	800-2 1/4 687 (700-2 1/4)	800-2 1/2 687 (700-2 1/2)

MARYSVILLE, CALIFORNIA

39°08'N - 121°26'W

BEALE AFB (KBAB)

Amdt 6 25JAN24

# HI-ILS or LOC Z RWY 15

SW-2, 16 APR 2026 to 14 MAY 2026

SW-2, 16 APR 2026 to 14 MAY 2026