

MARYSVILLE, CALIFORNIA

25051

HI-TACAN Z RWY 33

TACAN BAB Chan 23	APCH CRS 317°	Rwy ldg TDZE Arprt Elev	12,001 105 113
----------------------	------------------	-------------------------------	----------------------

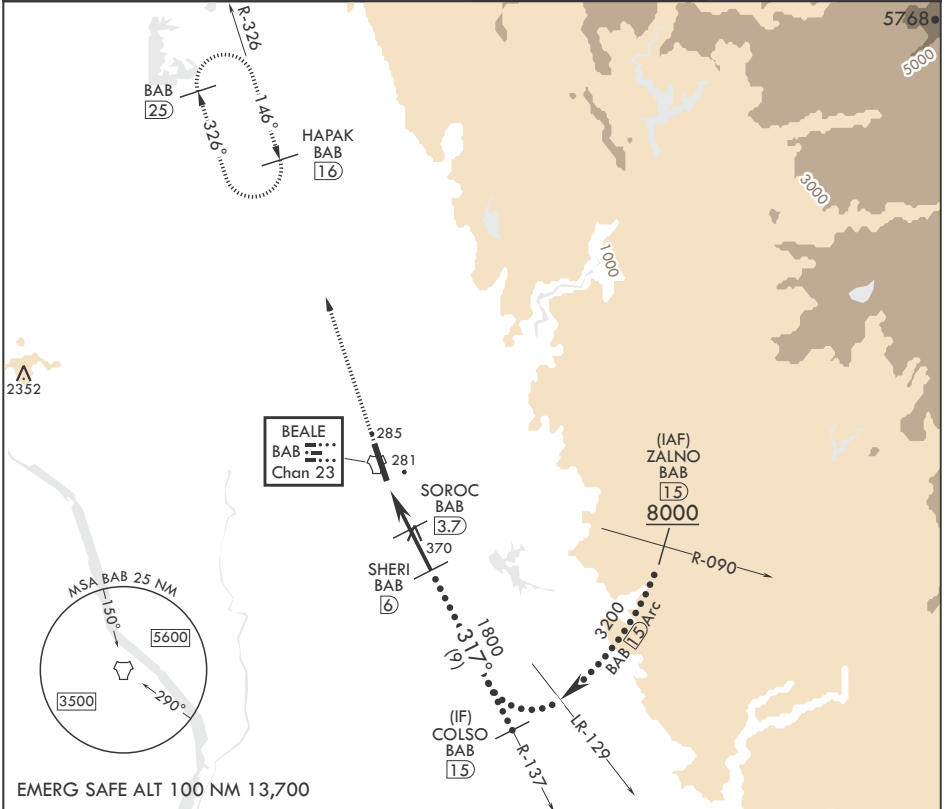
(USAF)

BEALE AFB (KBAB)

▲ * When ALS inop, increase CAT CDE vis to 1 1/4 miles.
 ** Circling not authorized NE of Rwy 15-33.

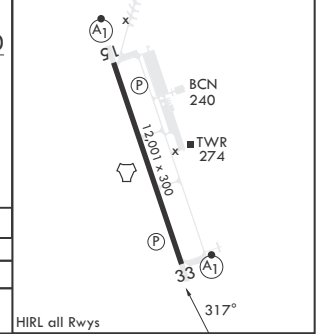
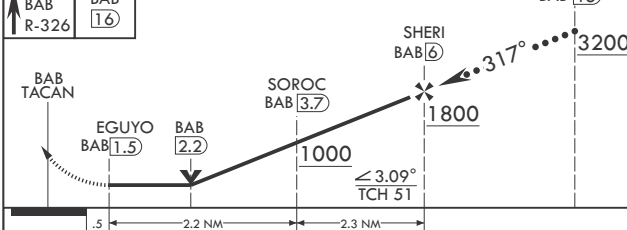
ALSIF-1
 MISSED APPROACH: Climb to 3600, intercept BAB TACAN R-326 to HAPAK and hold.

ATIS* 124.55 273.5	NORCAL APP CON 125.4 259.1	TOWER* 119.4 284.75	GND CON 121.6 257.75
-----------------------	-------------------------------	------------------------	-------------------------



EMERG SAFE ALT 100 NM 13,700

3600 BAB R-326	HAPAK BAB 16	COLSO BAB 15	ELEV 113	TDZE 105
----------------------	--------------------	--------------------	----------	----------



CATEGORY	C	D	E
S-33*	540/40	435	(500-3/4)
CIRCLING**	600-1½ 487 (500-1½)	800-2¼ 687 (700-2¼)	800-2½ 687 (700-2½)

HIRL all Rws

MARYSVILLE, CALIFORNIA

39°08'N - 121°26'W

BEALE AFB (KBAB)

Amdt 6 25JAN24

HI-TACAN Z RWY 33

SW-2, 16 APR 2026 to 14 MAY 2026

SW-2, 16 APR 2026 to 14 MAY 2026