

MARYSVILLE, CALIFORNIA

# ILS or LOC Y RWY 15

LOC I-BAB <b>109.5</b>	APCH CRS <b>145°</b>	Rwy ldg TDZE Arprt Elev	<b>12,001</b> <b>113</b> <b>113</b>
---------------------------	-------------------------	----------------------------	---

-(USAF)

BEALE AFB (KBAB)

RADAR or DME required

▼ \* When ALS inop, increase RVR to 40 and vis to 3/4 mile.  
\*\* When ALS inop, increase CAT AB RVR to 55 and vis to 1 mile, CAT CDE vis to 1 3/8 miles.

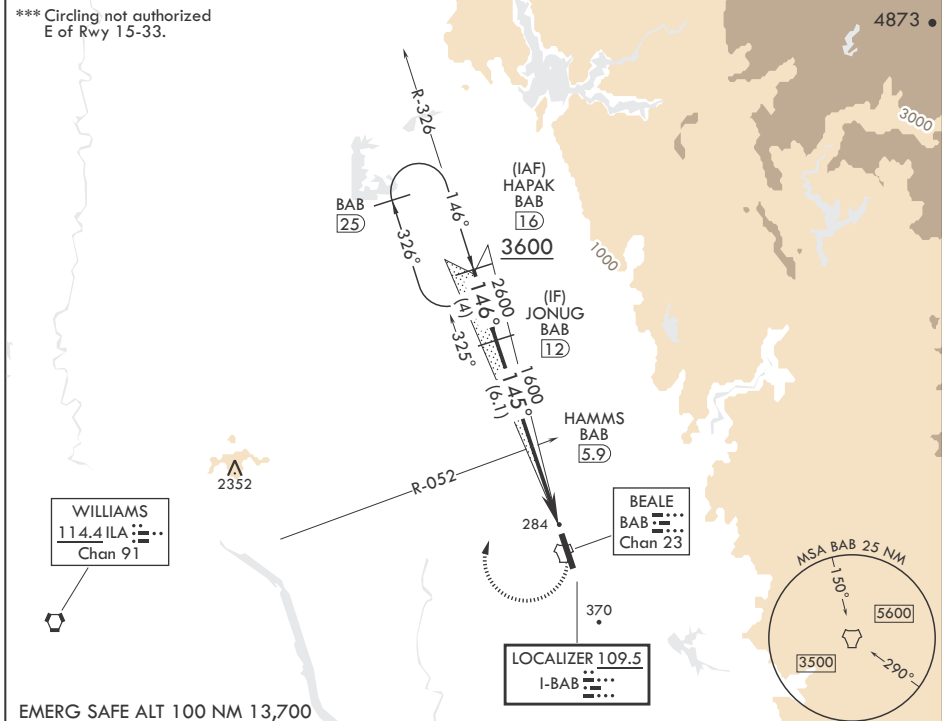
ALS-1



MISSED APPROACH: Climb to 700 on heading 145°, then climbing right turn to 4400 heading 011° to intercept BAB R-326 to HAPAK and hold, continue climb-in-hold to 4400.

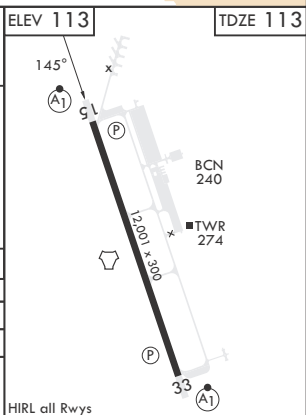
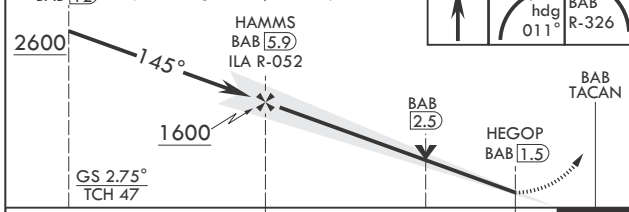
ATIS* <b>124.55 273.5</b>	NORCAL APP CON <b>125.4 259.1</b>	TOWER* <b>119.4 284.75</b>	GND CON <b>121.6 257.75</b>
------------------------------	--------------------------------------	-------------------------------	--------------------------------

\*\*\* Circling not authorized E of Rwy 15-33.



EMERG SAFE ALT 100 NM 13,700

JONUG BAB 12	VGSI and ILS glidepath not coincident (VGSI Angle 2.75/TCH 53).	700	4400	BAB R-326	ELEV 113	TDZE 113
--------------	---	-----	------	-----------	----------	----------



CATEGORY	A	B	C	D	E
S-ILS 15*	313/24		200	(200-1/2)	
S-LOC 15**	600/24	487 (500-1/2)	600/50	487	(500-1)
CIRCLING***	600-1	487 (500-1)	600-1 1/2 487 (500-1 1/2)	800-2 1/4 687 (700-2 1/4)	800-2 1/2 687 (700-2 1/2)

HIRL all Rwys

MARYSVILLE, CALIFORNIA

39°08'N - 121°26'W

BEALE AFB (KBAB)

Amdt 6 25JAN24

# ILS or LOC Y RWY 15

SW-2, 16 APR 2026 to 14 MAY 2026

SW-2, 16 APR 2026 to 14 MAY 2026