

HI-VOR or TACAN RWY 17R

| | | |
|--|-------------------------|--|
| VORTAC BFV 110.0 Chan 37 | APCH CRS 177° | Rwy ldg 13,503 TDZE 1922 Arpt Elev 1922 |
|--|-------------------------|--|

[USAF]

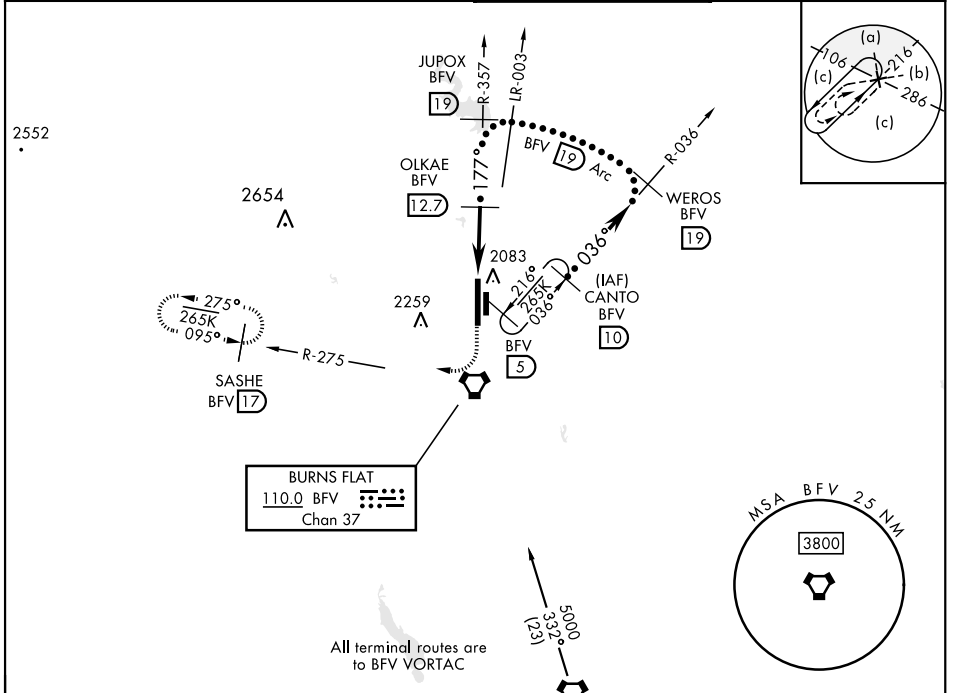
CLINTON-SHERMAN (KCSM)

DME required

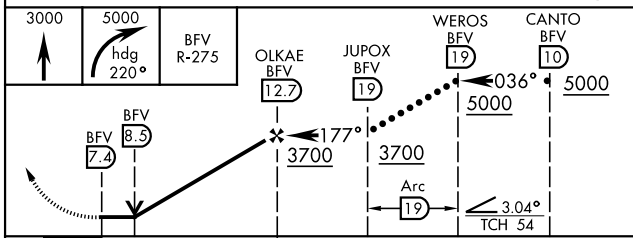
* Circling not authorized E of Rwy 17R-35L.

MISSED APPROACH: Climb to 3000 then climbing right turn to 5000 via heading 220° and BFV R-275 to SASHE/17 DME and hold.

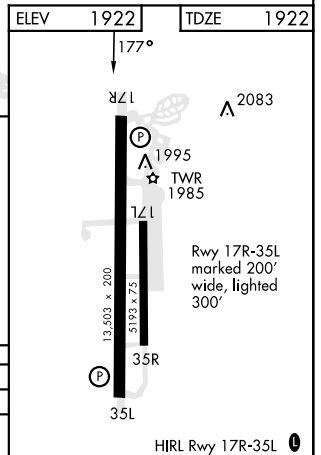
| | | | |
|-----------------------|---|--|-------------------------------|
| ASOS 118.45 | FORT WORTH CENTER 128.4 269.375 | TOWER ★ 119.6 (CTAF) 0 256.9 | GND CON 121.7 239.0 |
|-----------------------|---|--|-------------------------------|



EMERG SAFE ALT 100 NM 5000



| CATEGORY | C | D | E |
|-----------|-------------------------|-------------------------|-------------------------|
| S-17R | 2340-1¼ | 418 (500-1¼) | |
| CIRCLING* | 2380-1½ 458 (500-1½) | 2620-2¼ 698 (700-2¼) | 2620-2½ 698 (700-2½) |



BURNS FLAT, OKLAHOMA

35° 20' N - 99° 12' W

CLINTON-SHERMAN (KCSM)

Amdt 3 25FEB21

HI-VOR or TACAN RWY 17R

SC-1, 16 APR 2026 to 14 MAY 2026

SC-1, 16 APR 2026 to 14 MAY 2026