

LOC I-ITH 108.7	APP CRS 325°	Rwy Ldg 6602
		TDZE 1099
		Apt Elev 1099

ILS or LOC RWY 32

ITHACA TOMPKINS INTL (ITH)

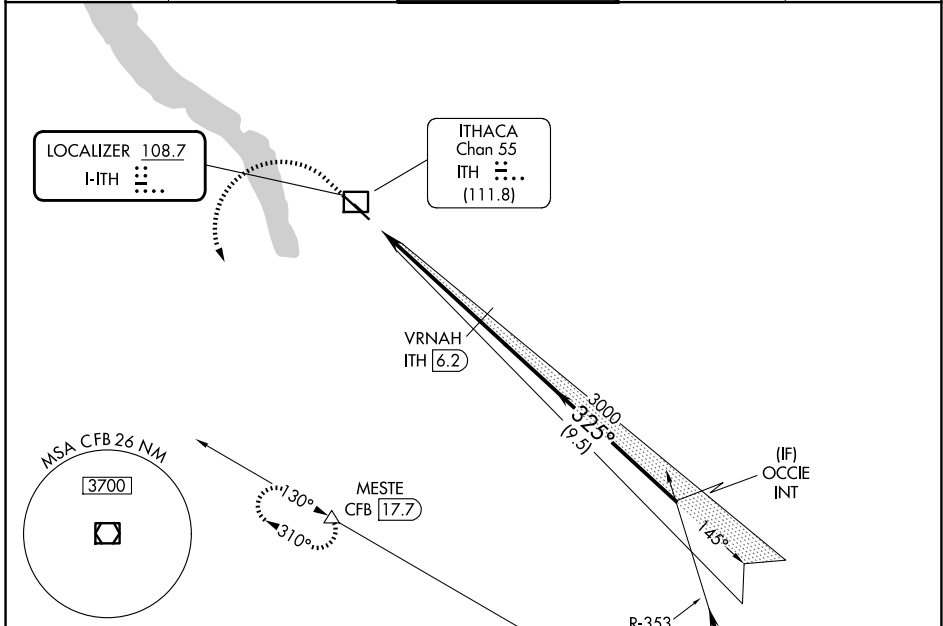
DME required.

⚠ Circling NA to Rwy 15 and 33. DME from ITH DME.
⚠ DME use requires simultaneous reception of I-ITH and ITH DME.
⚠ -18°C

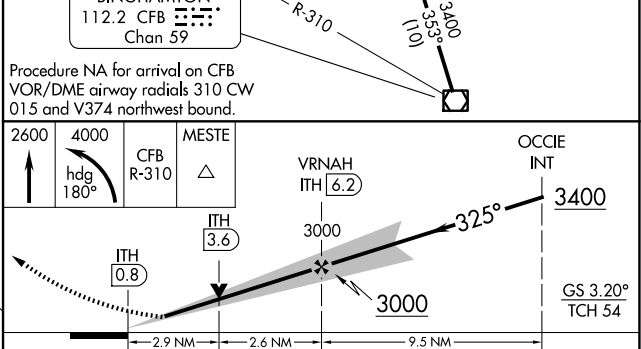
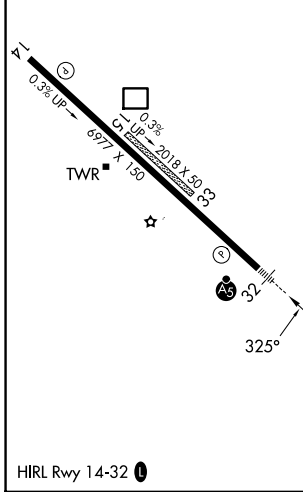
MALSR **AG**

MISSED APPROACH: Climb to 2600 then climbing left turn to 4000 on heading 180° and CFB VOR/DME R-310 to MESTE/CFB VOR/DME 17.7 DME and hold.

ATIS 125.175	ELMIRA APP CON★ 124.3 257.8	ITHACA TOWER★ 119.6 (CTAF) 0	GND CON 121.8	UNICOM 122.95
------------------------	---------------------------------------	--	-------------------------	-------------------------



ELEV 1099	D	TDZE 1099
-----------	----------	-----------



CATEGORY	A	B	C	D
S-ILS 32	1349/24		250 (300-1/2)	
S-LOC 32	2140/40 1041 (1100-3/4)	2140/55 1041 (1100-1)	2140-2 1/2	1041 (1100-2 1/2)
CIRCLING	2140-1 1/4 1041 (1100-1 1/4)	2140-1 1/2 1041 (1100-1 1/2)	2140-3 1041 (1100-3)	2440-3 1341 (1400-3)

NE-2, 16 APR 2026 to 14 MAY 2026

NE-2, 16 APR 2026 to 14 MAY 2026