

WAAS CH 62815 W32A	APP CRS 325°	Rwy Ldg TDZE 1099 Apr Elev 1099
--	------------------------	---

RNAV (GPS) RWY 32

ITHACA TOMPKINS INTL (ITH)

RNP APCH - GPS.

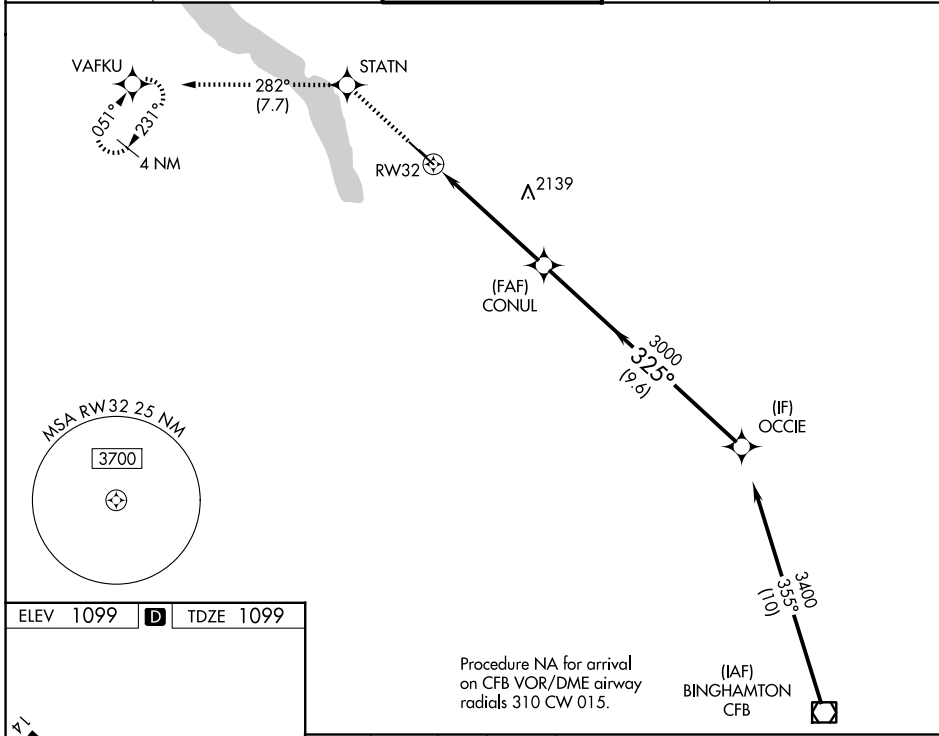
⚠ Rwy 32 helicopter visibility reduction below 3/4 SM NA. Circling NA to Rws 15 and 33. Inop table does not apply to LNAV Cat A/C/D. For inop ALS, increase LPV all Cats visibility to RVR 4500.

MALSR

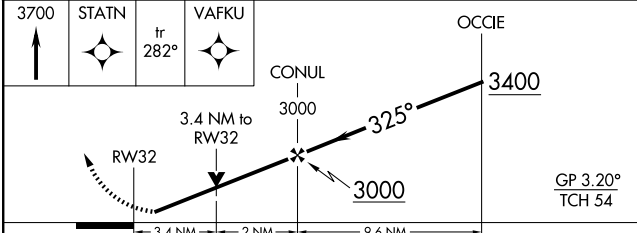
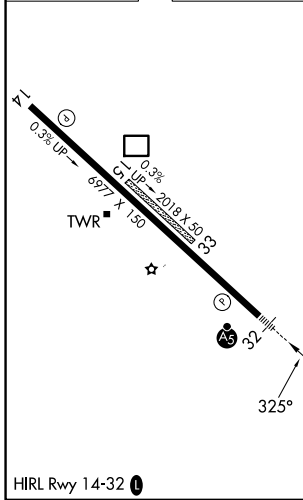


MISSED APPROACH: Climb to 3700 direct STATN and on track 282° to VAFKU and hold.

ATIS 125.175	ELMIRA APP CON* 124.3 257.8	ITHACA TOWER* 119.6 (CTAF) 0	GND CON 121.8	UNICOM 122.95
------------------------	---------------------------------------	--	-------------------------	-------------------------



ELEV 1099	D	TDZE 1099
-----------	----------	-----------



CATEGORY	A	B	C	D
LPV DA	1385/24		286 (300-1/2)	
LNAV MDA	2300/40 1201 (1300-3/4)	2300/55 1201 (1300-1)	2300-3	1201 (1300-3)
CIRCLING	2300-1 1/4 1201 (1300-1 1/4)	2300-1 1/2 1201 (1300-1 1/2)	2300-3 1201 (1300-3)	2440-3 1341 (1400-3)

NE-2, 16 APR 2026 to 14 MAY 2026

NE-2, 16 APR 2026 to 14 MAY 2026