

BRAYMER EIGHT ARRIVAL
(BQS, BQS8) 20APR23

BRAYMER EIGHT ARRIVAL
(BQS, BQS8) 25107

AL-780 (FAA)

KANSAS CITY, MISSOURI

KANSAS CITY APP CON
120.95 318.1
MCI D-ATIS
128.375
MKC ATIS
120.75
OJC ATIS
119.35
STJ ATIS
125.05

LAMONI
116.7 LMN
Chan 114

RADAR required.

KIRKSVILLE
114.6 IRK
Chan 93

DONNS
12000
KMCI Ldg Rwys 9, 19L/R, 27
Ldg KFLV/KGPH/KIXD/
KLXT/KMKC/KOJC/KSTJ

BRAYMER
115.35 BQS
Chan 100(Y)
14000
12000

SPINNER
112.7 SPI
Chan 74

HALLSVILLE
114.2 HLV
Chan 89

NAPOLEON
115.15 ANX
Chan 98(Y)

ROSECRANS
MEML

SHERMAN AAF

KANSAS CITY
INTL

BYGEC
12000 210K
KMCI Ldg
Rwys 1L/R

KANSAS CITY
DOWNTOWN/
WHEELER FLD

KANSAS CITY/
LEE'S SUMMIT RGNL

NEW CENTURY
AIR CENTER

JOHNSON COUNTY EXEC

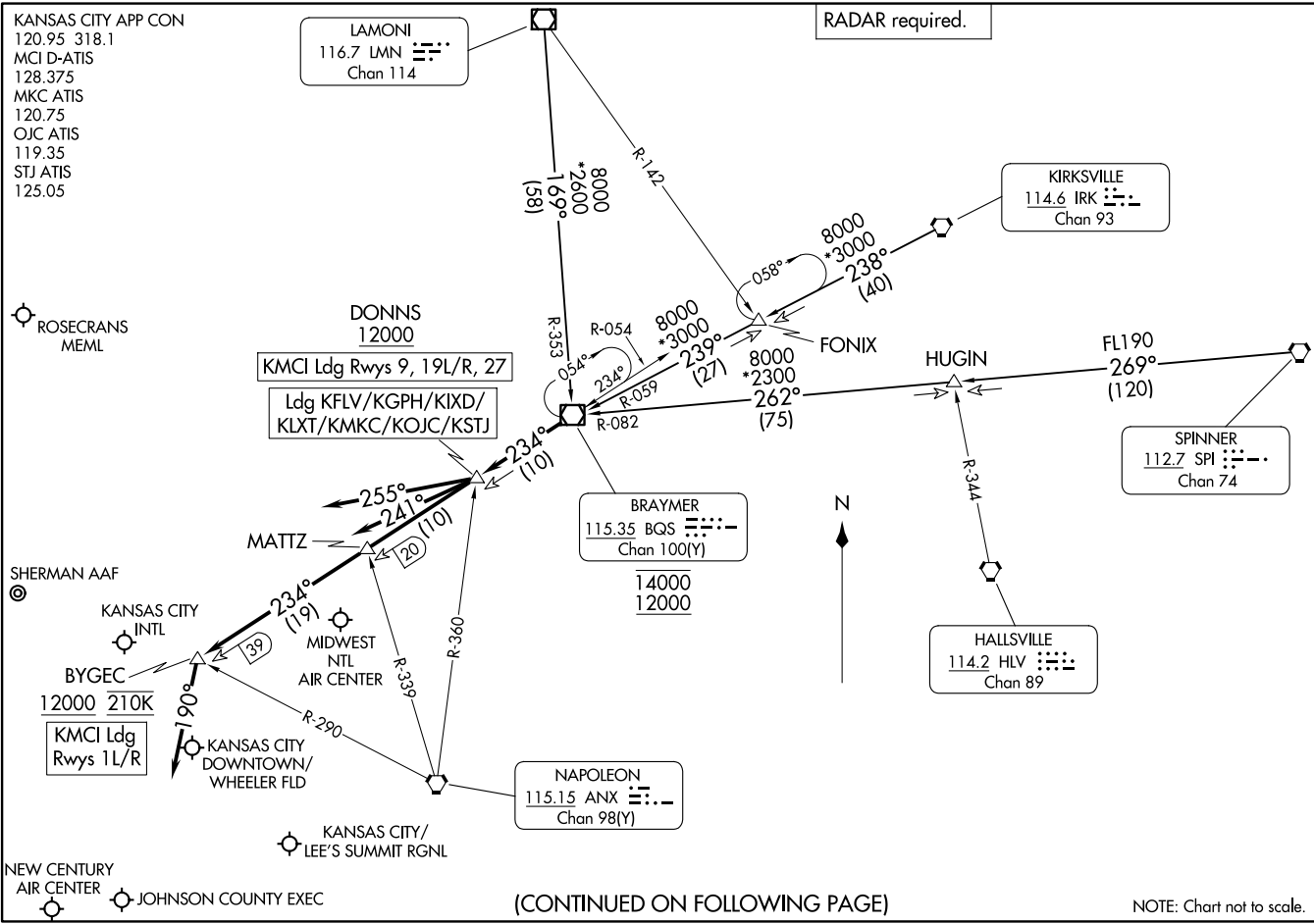
MATTZ

MIDWEST
NTL
AIR CENTER



(CONTINUED ON FOLLOWING PAGE)

NOTE: Chart not to scale.



ARRIVAL ROUTE DESCRIPTION

KIRKSVILLE TRANSITION (IRK.BQS8): From over IRK VORTAC on IRK R-238 to FONIX, then on BQS R-059 to BQS VOR/DME. Thence. . . .

LAMONI TRANSITION (LMN.BQS8): From over LMN VOR/DME on LMN R-169 and BQS R-353 to BQS VOR/DME. Thence. . . .

SPINNER TRANSITION (SPI.BQS8): From over SPI VORTAC on SPI R-269 to HUGIN, then on BQS R-082 to BQS VOR/DME. Thence. . . .

LANDING KMCI RUNWAYS 1L/R: From over BQS VOR/DME on BQS R-234 to cross BYGEC at or above 12000 and at 210K, then on heading 190°. Expect RADAR vectors to final approach course.

LANDING KMCI RUNWAYS 9, 19L/R, 27: From over BQS VOR/DME on BQS R-234 to cross DONNS at or above 12000, then on heading 255°. Expect RADAR vectors to final approach course.

LANDING KFLV/KGPH/KIXD/KLXT/KMKC/KOJC/KSTJ: From over BQS VOR/DME on BQS R-234 to cross DONNS at or above 12000, then on heading 241°. Expect RADAR vectors to final approach course.

NC-3, 16 APR 2026 to 14 MAY 2026

NC-3, 16 APR 2026 to 14 MAY 2026