

| | | |
|--|------------------------|-------------------------|
| LOC/DME I-PAJ 109.1 Chan 28 | APP CRS 191° | Rwy Ldg 10801 |
| | | TDZE 991 |
| | | Apt Elev 1027 |

ILS RWY 19R (CAT II & III)

KANSAS CITY INTL (MCI)

RNP APCH - GPS. From SCIPR or HOLMS or SWETR or SOKKS.

DME or RADAR required. RADAR required for procedure entry at CAMDO.

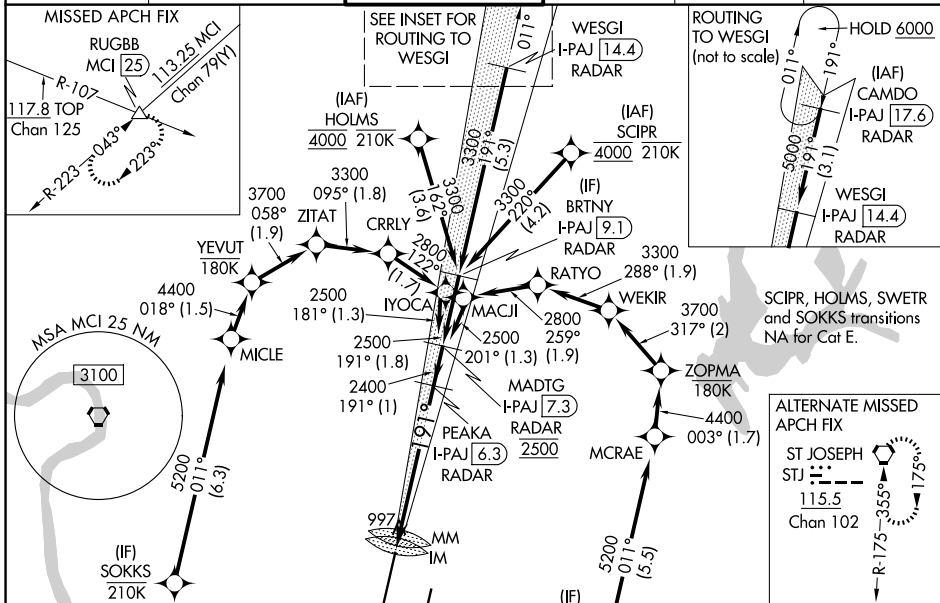
Simultaneous approach authorized except from SCIPR and HOLMS, SOKKS, and SWETR. CAT II: RVR 1000 authorized with specific OPSPEC, MSPEC, or LOA approval and use of autoland or HUD to touchdown.

ALSF-2



MISSED APPROACH: Climb to 2000 then climbing right turn to 4000 on heading 240° and on MCI VORTAC R-223 to RUGBB INT/MCI 25 DME and hold.

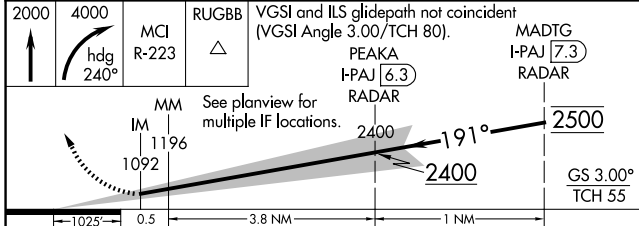
| | | | | | |
|--------------------------|--|--|-------------------------|--------------------------|-------|
| D-ATIS 128.375 | KANSAS CITY APP CON 120.95 318.1 | INTERNATIONAL TOWER 128.2 254.25 | GND CON 121.8 | CLNC DEL 135.7 | CPDLC |
|--------------------------|--|--|-------------------------|--------------------------|-------|



NC-3, 16 APR 2026 to 14 MAY 2026

NC-3, 16 APR 2026 to 14 MAY 2026

| | |
|-------------------------------|----------|
| ELEV 1027 | TDZE 991 |
| LOCALIZER 109.1 I-PAJ Chan 28 | |



| | | | | | |
|-----------|------------------------------|---|---|---|---|
| CATEGORY | A | B | C | D | E |
| S-ILS 19R | CAT II RA 105/12 100 DA 1091 | | | | |
| S-ILS 19R | CAT III RVR 07 | | | | |

CATEGORY II & III ILS - SPECIAL AIRCREW & AIRCRAFT CERTIFICATION REQUIRED

