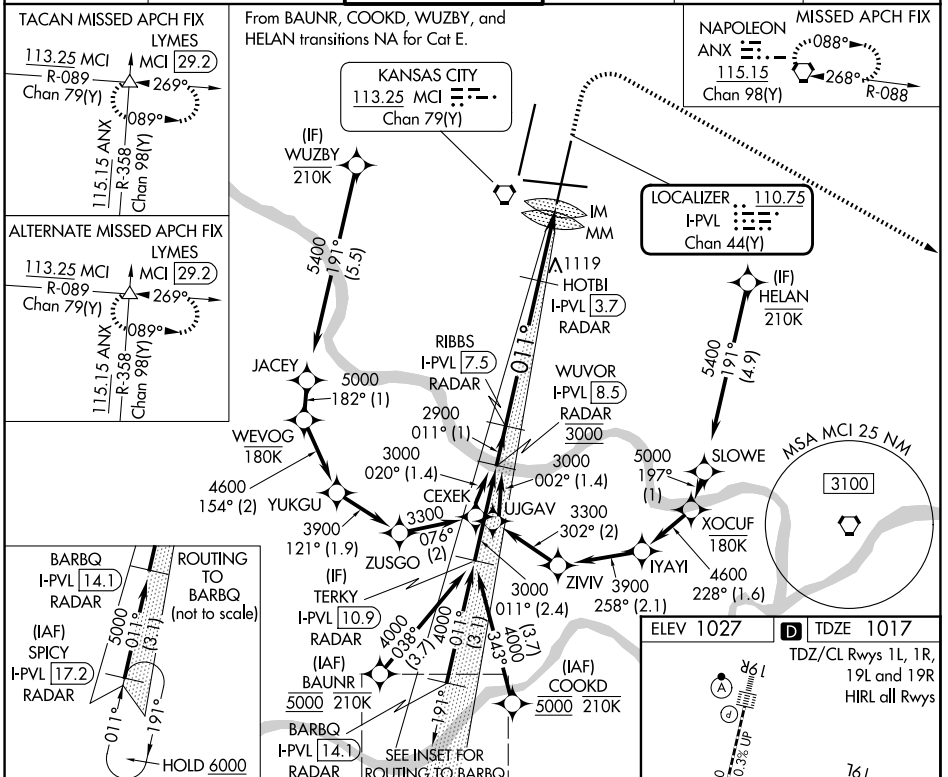


LOC/DME I-PVL 110.75 Chan 44 (Y)	APP CRS 011°	Rwy Ldg TDZE 9500 1017 Apt Elev 1027
--	------------------------	--

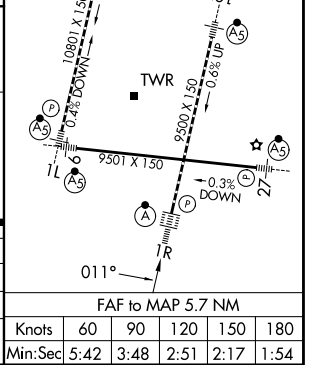
ILS or LOC RWY 1R

KANSAS CITY INTL (MCI)

RNP APCH - GPS. From BAUNR or COOKD or WUZBY or HELAN.		ALSF-2 	MISSED APPROACH: Climb to 1500 then climbing right turn to 4000 direct ANX VORTAC and hold. (TACAN aircraft) Climb to 1500 then climbing right turn to 4000 on heading 130° and MCI R-089 to LYMES INT/ MCI 29.2 DME and hold.		
DME or RADAR required. RADAR required for procedure entry at SPICY.					
<p>▼ For inop ALS, increase S-ILS 1R Cat E visibility to RVR 4000 and S-LOC 1R Cat C/D/E visibility to RVR 5500. Simultaneous approach authorized except from BAUNR, COOKD, WUZBY, and HELAN.</p>					
D-ATIS 128.375	KANSAS CITY APP CON 120.95 318.1	INTERNATIONAL TOWER 128.2 254.25	GND CON 121.8	CLNC DEL 135.7	CPDLC



WUVOR I-PVL [8.5] RADAR	VGSI and ILS glidepath not coincident (VGSI Angle 3.00/TCH 74).	1500	4000	ANX	
RIBBS I-PVL [7.5] RADAR		2900			
HOTBI I-PVL [3.7] RADAR					
GS 3.00° TCH 59	See planview for multiple IF locations.	1700			
1 NM	3.7 NM	1.2 NM	0.4	0.3	
0.1					
CATEGORY	A	B	C	D	E
S-ILS 1R	1217/18 200 (200-½)				
S-LOC 1R	1360/24	343 (400-½)	1360/30	343 (400-¾)	
CIRCLING	1540-1	513 (600-1)	1540-1½	513 (600-1½)	
			1580-2	553 (600-2)	



NC-3, 16 APR 2026 to 14 MAY 2026

NC-3, 16 APR 2026 to 14 MAY 2026