

RACER EIGHT DEPARTURE

AL-780 (FAA)

KANSAS CITY INTL (MCI)
KANSAS CITY, MISSOURI

RADAR required.

**TOP ALTITUDE:
10000**

KANSAS CITY DEP CON
123.95 318.1 (BUTLER/SPRINGFIELD TRANSITION)
124.7 284.7 (DOSOA TRANSITION)
D-ATIS
128.375
CLNC DEL
135.7

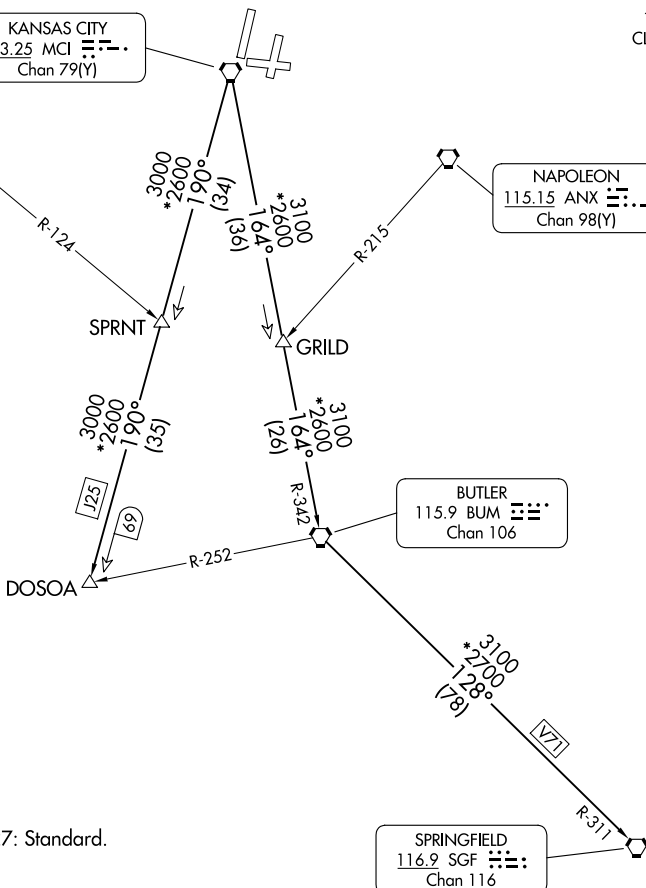
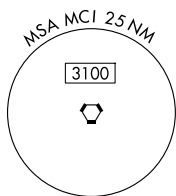
KANSAS CITY
113.25 MCI
Chan 79(Y)

TOPEKA
117.8 TOP
Chan 125

NAPOLEON
115.15 ANX
Chan 98(Y)

BUTLER
115.9 BUM
Chan 106

SPRINGFIELD
116.9 SGF
Chan 116



TAKEOFF MINIMUMS

Rwys 1L/R, 9, 19L/R, 27: Standard.

NOTE: Chart not to scale.

DEPARTURE ROUTE DESCRIPTION

TAKEOFF ALL RUNWAYS: Climb on assigned heading for RADAR vectors to appropriate route. Maintain 10000 or as assigned by ATC, expect filed altitude 10 minutes after departure.

BUTLER TRANSITION (RACER8.BUM): From over MCI VORTAC on MCI R-164 and BUM R-342 to BUM VORTAC.

DOSOA TRANSITION (RACER8.DOSOA): From over MCI VORTAC on MCI R-190 to DOSOA.

SPRINGFIELD TRANSITION (RACER8.SGF): From over MCI VORTAC on MCI R-164 and BUM R-342 to BUM VORTAC, then on BUM R-128 and SGF R-311 to SGF VORTAC.

RACER EIGHT DEPARTURE

NC-3, 16 APR 2026 to 14 MAY 2026

NC-3, 16 APR 2026 to 14 MAY 2026