


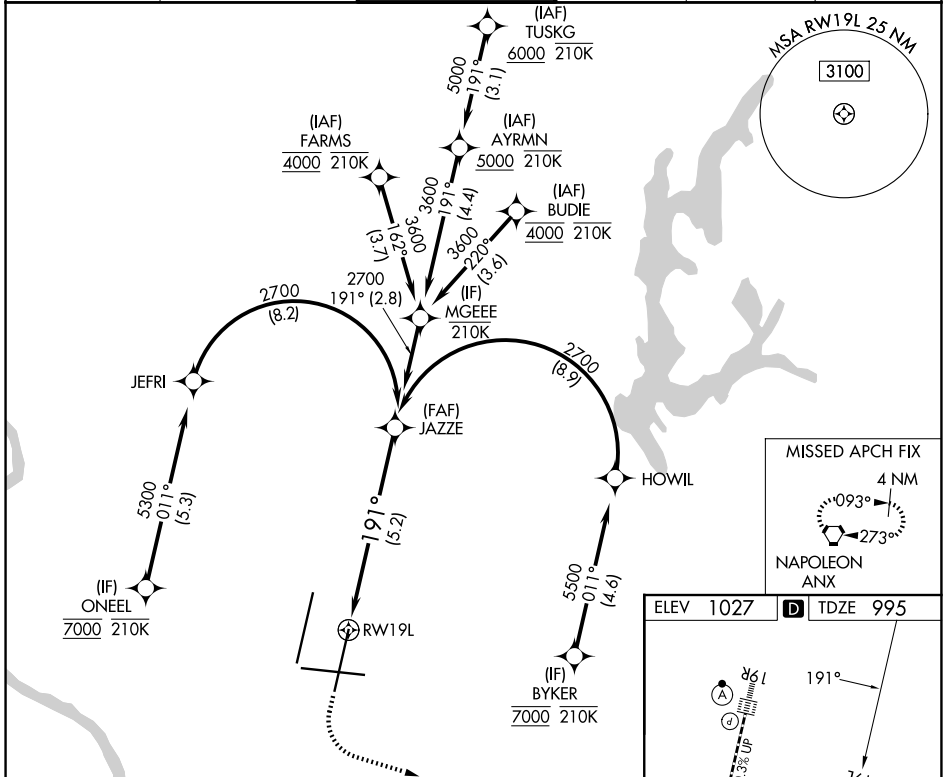
APP CRS	Rwy Ldg	9500
191°	TDZE	995
	Apt Elev	1027



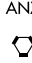
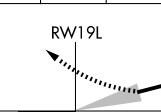
RNAV (RNP) Z RWY 19L

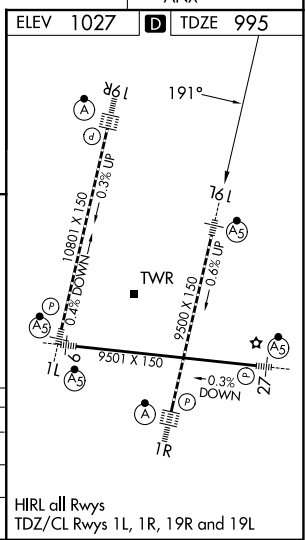
KANSAS CITY INTL (MCI)

RNP AR APCH - GPS.		MALSR	 MISSED APPROACH: Climb to 1500 then climbing left turn to 4000 direct ANX VORTAC and hold.
Use of FD or AP required during simultaneous operations. For uncompensated Baro-VNAV systems, procedure NA below -21°C or above 54°C. Simultaneous approach authorized, except for arrivals at ONEEL, BYKER, FARMS and BUDIE. For inop ALS, increase RNP 0.20 all Cats visibility to RVR 4500 and RNP 0.30 all Cats visibility to RVR 5500.			

D-ATIS	KANSAS CITY APP CON	INTERNATIONAL TOWER	GND CON	CLNC DEL	CPDLC
128.375	120.95 318.1	128.2 254.25	121.8	135.7	



1500	4000	ANX	JAZZE
			2700
		See planview for multiple IF locations.	
GP 3.00° TCH 59		-5.2 NM	
CATEGORY	A	B	C
RNP 0.20 DA		1310/24	315 (300-½)
RNP 0.30 DA		1365/35	370 (400-¾)



AUTHORIZATION REQUIRED

NC-3, 16 APR 2026 to 14 MAY 2026

NC-3, 16 APR 2026 to 14 MAY 2026