

APP CRS	Rwy Ldg	10801
191°	TDZE	991
	Apt Elev	1027

RNAV (RNP) Z RWY 19R

KANSAS CITY INTL (MCI)

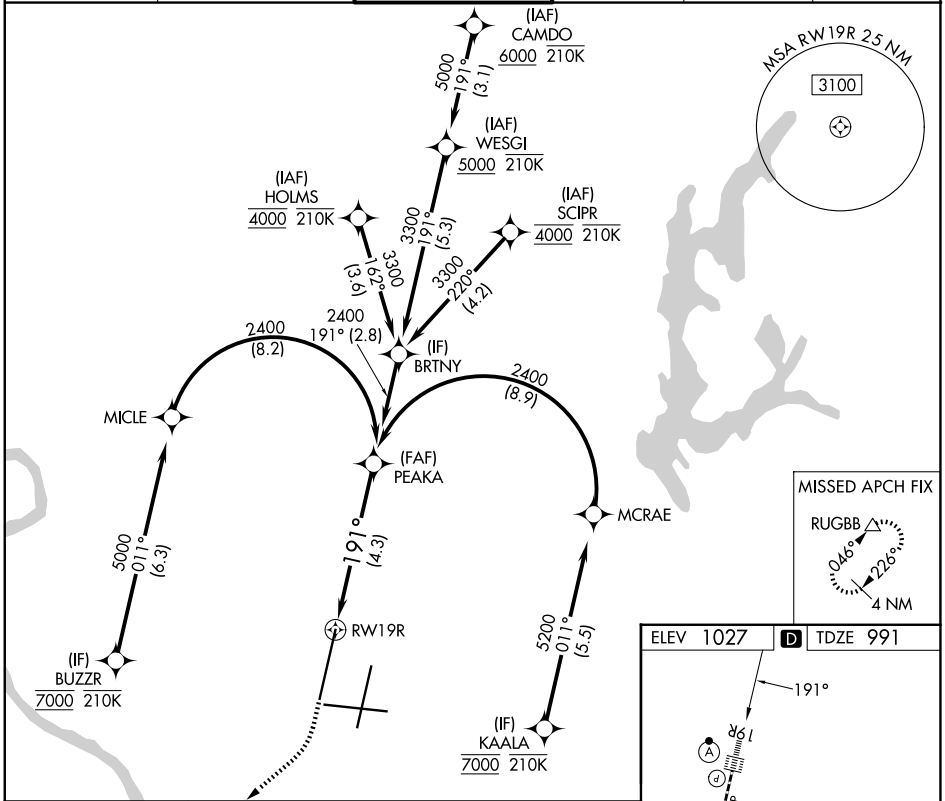
RADAR required for procedure entry. RNP AR APCH - GPS.

▼ For uncompensated Baro-VNAV systems, procedure NA below -21°C or above 54°C. Simultaneous approach authorized, except for arrivals at BUZZR, HOLMS, SCIPR, and KAALA. For inop ALS, increase RNP 0.15 all Cats visibility to RVR 4500 and RNP 0.30 all Cats visibility RVR 6000.



MISSED APPROACH: Climb to 2000 then climbing right turn to 4000 direct RUGBB and hold.

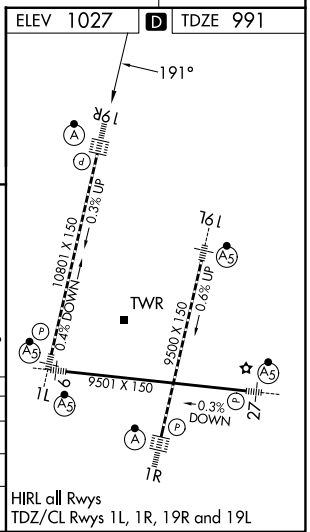
D-ATIS 128.375	KANSAS CITY APP CON 120.95 318.1	INTERNATIONAL TOWER 128.2 254.25	GND CON 121.8	CLNC DEL 135.7	CPDLC
--------------------------	--	--	-------------------------	--------------------------	-------



NC-3, 16 APR 2026 to 14 MAY 2026

NC-3, 16 APR 2026 to 14 MAY 2026

2000	4000	RUGBB	See planview for multiple IF locations. VGSI and RNAV glidepath not coincident (VGSI Angle 3.00/TCH 80).	PEAKA	
				2400	
RWY 19R		GP 3.00°		TCH 55	
CATEGORY		A	B	C	D
RNP 0.15 DA		1287/24		296 (300-1/2)	
RNP 0.30 DA		1405/40		414 (400-3/4)	
AUTHORIZATION REQUIRED					



HIRL all Rwys
TDZ/CL Rwys 1L, 1R, 19R and 19L