

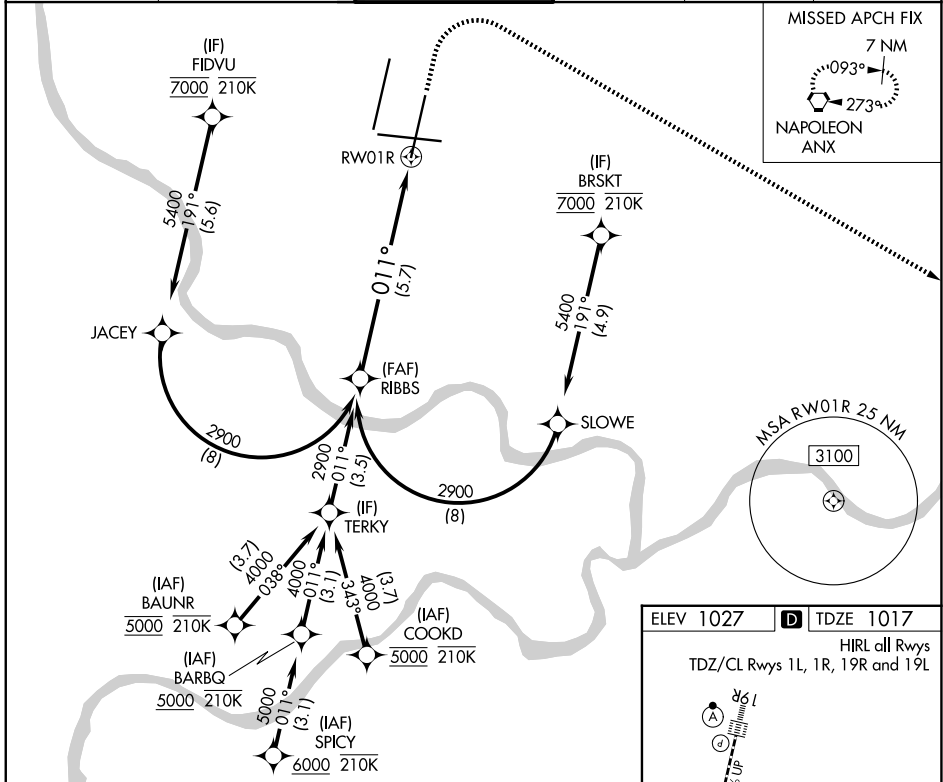
APP CRS	Rwy Ldg	9500
011°	TDZE	1017
	Apt Elev	1027

RNAV (RNP) Z RWY 1R

KANSAS CITY INTL (MCI)

RNP AR APCH - GPS.	ALSF-2 	MISSED APPROACH: Climb to 1500 then climbing right turn to 4000 direct ANX VORTAC and hold.
Use of FD or AP required during simultaneous operations. For uncompensated Baro-VNAV systems, procedure NA below -19°C or above 54°C. Simultaneous approach authorized, except for arrivals at FIDVU, BRSKT, BAUNR and COOKD. For inop ALS, increase RNP 0.30 all Cats visibility to RVR 4500.		

D-ATIS 128.375	KANSAS CITY APP CON 120.95 318.1	INTERNATIONAL TOWER 128.2 254.25	GND CON 121.8	CLNC DEL 135.7	CPDLC
--------------------------	--	--	-------------------------	--------------------------	-------



NC-3, 16 APR 2026 to 14 MAY 2026

NC-3, 16 APR 2026 to 14 MAY 2026

RIBBS VGS1 and RNAV glidepath not coincident (VGS1 Angle 3.00/TCH 74).		1500	4000	ANX
2900 GP 3.00° TCH 59		See planview for multiple IF locations.		
011°		RWY 1R		
5.7 NM				
CATEGORY	A	B	C	D
RNP 0.30 DA		1280/24	263 (300-1/2)	
AUTHORIZATION REQUIRED				

