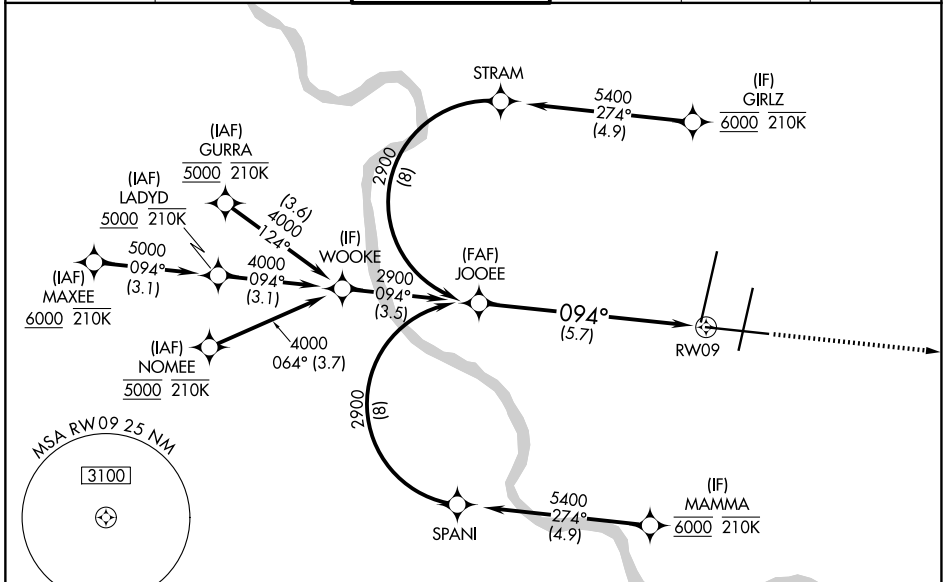


RNAV (RNP) Z RWY 9 KANSAS CITY INTL (MCI)

APP CRS 094°	Rwy Ldg TDZE Apt Elev	9501 1016 1027
------------------------	-----------------------------	---

RNP AR APCH - GPS.	MALSR 	MISSED APPROACH: Climb to 4000 direct DUSTN and on track 092° LYMES and hold.
<p>▼ For uncompensated Baro-VNAV systems, procedure NA below -19°C or above 54°C. For inop ALS, increase RNP 0.20 all Cats visibility to RVR 4500; increase RNP 0.30 all Cats visibility to RVR 6000.</p>		

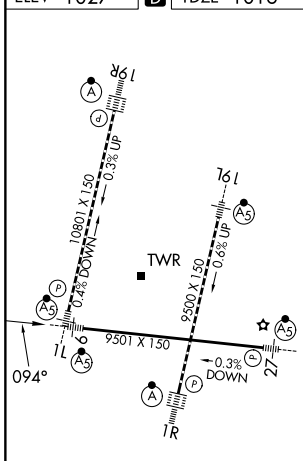
D-ATIS 128.375	KANSAS CITY APP CON 120.95 318.1	INTERNATIONAL TOWER 128.2 254.25	GND CON 121.8	CLNC DEL 135.7	CPDLC
--------------------------	--	--	-------------------------	--------------------------	-------



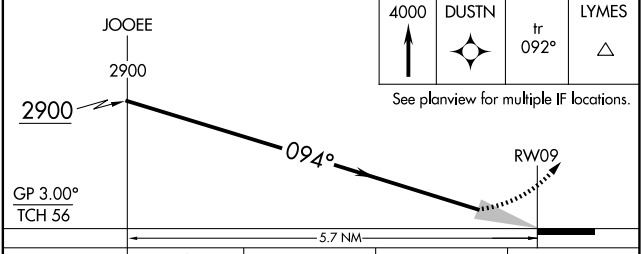
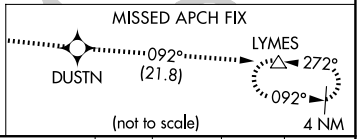
NC-3, 16 APR 2026 to 14 MAY 2026

NC-3, 16 APR 2026 to 14 MAY 2026

ELEV 1027	D	TDZE 1016
-----------	----------	-----------



HIRL all RwyS
TDZ/CL RwyS 1L, 1R, 19R and 19L



GP 3.00° TCH 56				
CATEGORY	A	B	C	D
RNP 0.20 DA	1319/24 303 (300-½)			
RNP 0.30 DA	1418/40 402 (400-¾)			

AUTHORIZATION REQUIRED