


WAAS CH <b>42808</b> <b>W01B</b>	APP CRS <b>011°</b>	Rwy Ldg <b>10801</b> TDZE <b>1014</b> Apt Elev <b>1027</b>
--	------------------------	--

# RNAV (GPS) Y RWY 1L

KANSAS CITY INTL (MCI)

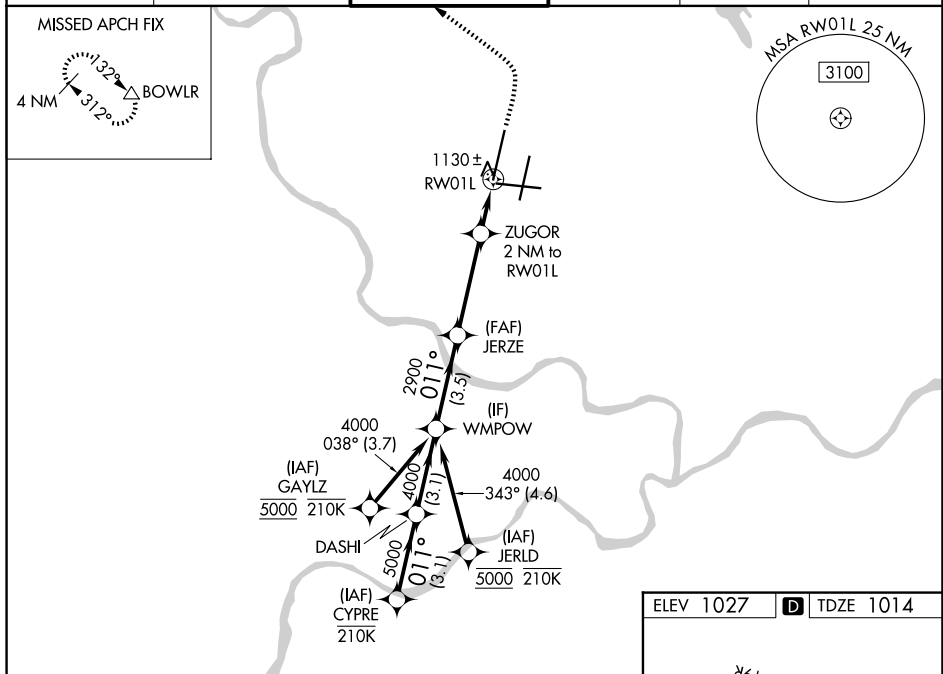
RNP APCH - GPS.

▼ Use of FD or AP required during simultaneous operations. LNAV procedure NA during simultaneous operations. For uncompensated Baro-VNAV systems, LNAV/VNAV NA below -19°C or above 54°C. For inop ALS, increase LNAV/VNAV all Cats visibility to RVR 4500 and LNAV Cats C/D visibility to RVR 5500. Simultaneous approach authorized except from GAYLZ and JERLD.

MALSR 

MISSED APPROACH: Climb to 2000 then climbing left turn to 4000 direct BOWLR and hold.

D-ATIS <b>128.375</b>	KANSAS CITY APP CON <b>120.95 318.1</b>	INTERNATIONAL TOWER <b>128.2 254.25</b>	GND CON <b>121.8</b>	CLNC DEL <b>135.7</b>	CPDLC
--------------------------	--	--	-------------------------	--------------------------	-------



NC-3, 16 APR 2026 to 14 MAY 2026

NC-3, 16 APR 2026 to 14 MAY 2026

CYPRE		VGSI and RNAV glidepath not coincident (VGSI Angle 3.00/TCH 78).		2000	4000	BOWLR
DASHI		WMPOW				
GP 3.00° TCH 57	6000	5000	4000	2900	1700	
CATEGORY	A	B	C	D		
LPV DA	1214/18		200 (200-½)			
LNAV/VNAV DA	1328/24		314 (400-½)			
LNAV MDA	1380/24 366 (400-½)		1380/35 366 (400-¾)			
CIRCLING	1540-1 513 (600-1)		1540-1½ 513 (600-1½)		1580-2 553 (600-2)	

