

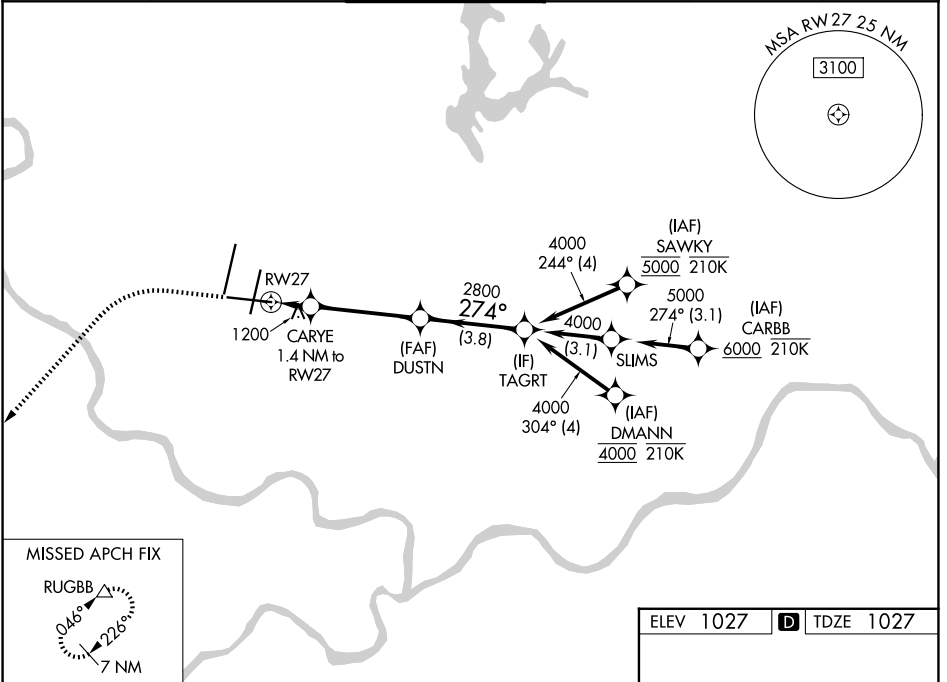
WAAS CH <b>82708</b> <b>W27A</b>	APP CRS <b>274°</b>	Rwy Ldg TDZE <b>1027</b> Apt Elev <b>1027</b>
--	------------------------	---

# RNAV (GPS) Y RWY 27

KANSAS CITY INTL (MCI)

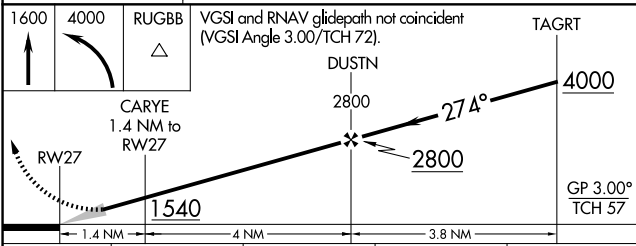
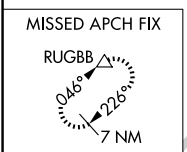
RNP APCH - GPS. ▼ For uncompensated Baro-VNAV systems, LNAV/VNAV NA below -19°C or above 54°C. For inop ALS, increase LNAV/VNAV all Cats to 1½ SM. *RVR 1800 authorized with use of FD or AP or HUD to DA.	MALSR 	MISSED APPROACH: Climb to 1600 then climbing left turn to 4000 direct RUGBB and hold.
--	-----------	---

D-ATIS <b>128.375</b>	KANSAS CITY APP CON <b>120.95 318.1</b>	INTERNATIONAL TOWER <b>128.2 254.25</b>	GND CON <b>121.8</b>	CLNC DEL <b>135.7</b>	CPDLC
--------------------------	--	--	-------------------------	--------------------------	-------

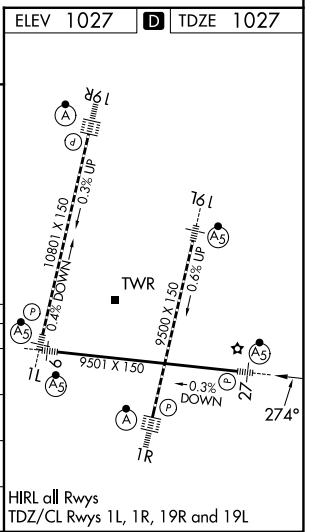


NC-3, 16 APR 2026 to 14 MAY 2026

NC-3, 16 APR 2026 to 14 MAY 2026



CATEGORY	A	B	C	D
LPV DA*		1227/24	200 (200-½)	
LNAV/VNAV DA		1496/50	469 (500-1)	
LNAV MDA	1460/24	433 (500-½)	1460/40	433 (500-¾)
CIRCLING	1540-1	513 (600-1)	1540-1½ 513 (600-½)	1580-2 553 (600-2)



HIRL all Rwys  
TDZ/CL Rws 1L, 1R, 19R and 19L