

(WUTNG.WUTNG3) 23222

AL-780 (FAA)

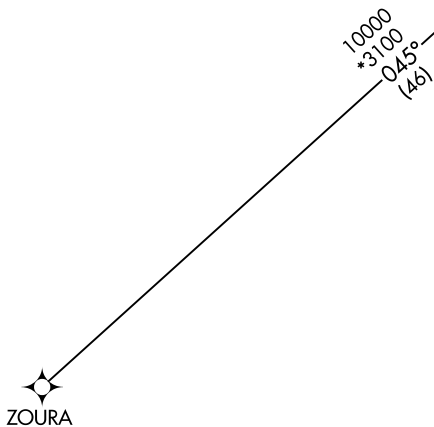
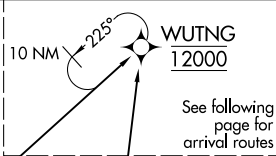
KANSAS CITY INTL (MCI)  
KANSAS CITY, MISSOURI

# WUTNG THREE ARRIVAL (RNAV) Transition Routes

KANSAS CITY APP CON  
120.95 318.1  
D-ATIS  
128.375

RNAV 1 - DME/DME/IRU or GPS.

RADAR required.



NOTE: Expect runway assignment from Kansas City TRACON upon initial contact.

(CONTINUED ON FOLLOWING PAGE)

STASN TRANSITION (STASN.WUTNG3)

ZOURA TRANSITION (ZOURA.WUTNG3)

NOTE: Chart not to scale.

# WUTNG THREE ARRIVAL (RNAV) Transition Routes

(WUTNG.WUTNG3) 10AUG23

KANSAS CITY, MISSOURI  
KANSAS CITY INTL (MCI)

NC-3, 16 APR 2026 to 14 MAY 2026

NC-3, 16 APR 2026 to 14 MAY 2026

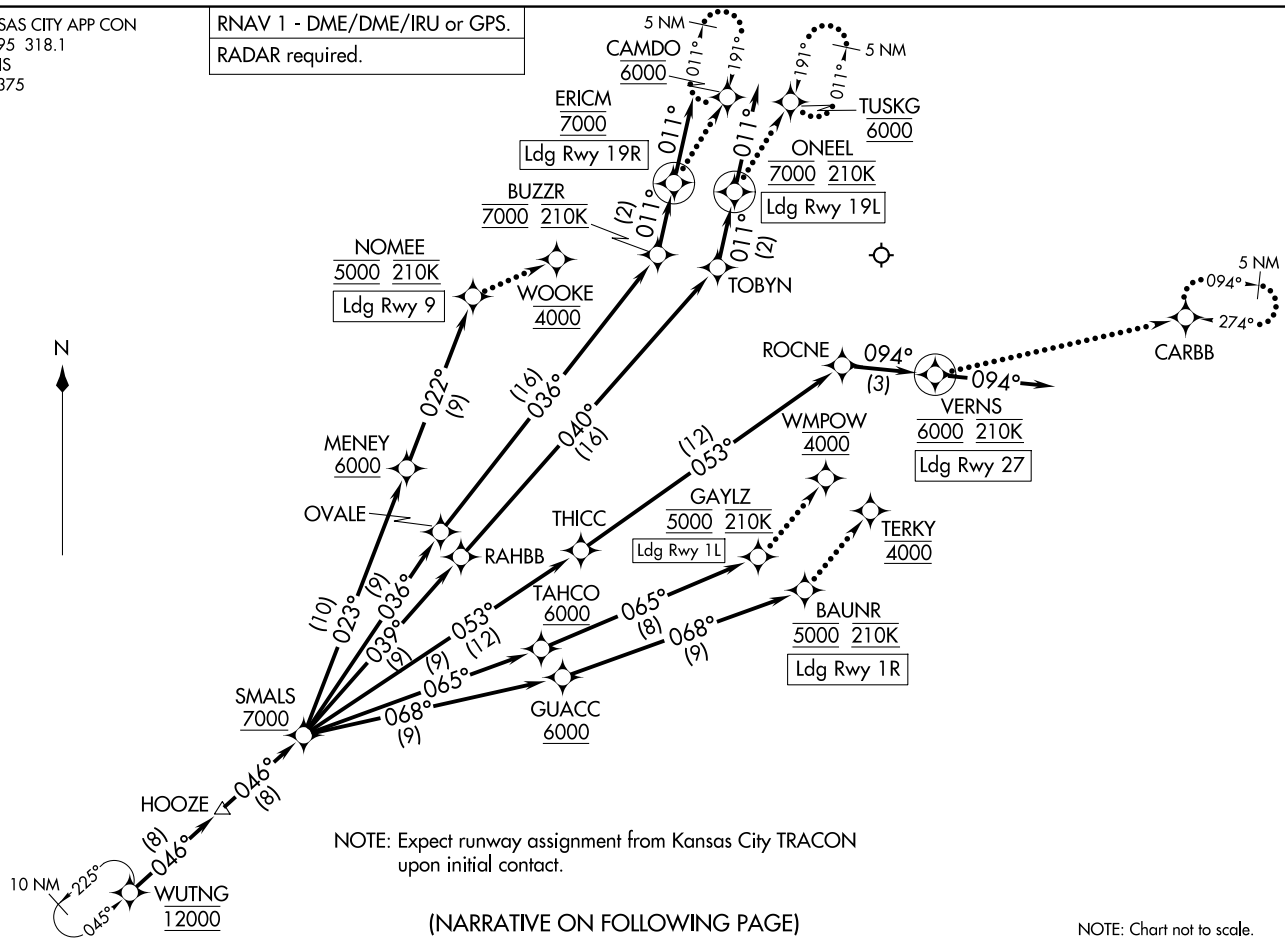
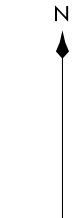
RNAV 1 - DME/DME/IRU or GPS.  
RADAR required.

KANSAS CITY APP CON  
120.95 318.1  
D-ATIS  
128.375

WUTING THREE ARRIVAL (RNAV) Arrival Routes  
(WUTING.WUTING3) 10AUG23

(WUTING.WUTING3) 23222  
WUTING THREE ARRIVAL (RNAV) Arrival Routes  
AL-780 (FAA)

KANSAS CITY INTL (MCI)  
KANSAS CITY, MISSOURI



NOTE: Expect runway assignment from Kansas City TRACON upon initial contact.

(NARRATIVE ON FOLLOWING PAGE)

NOTE: Chart not to scale.

KANSAS CITY, MISSOURI  
KANSAS CITY INTL (MCI)

ARRIVAL ROUTE DESCRIPTION

From WUTNG on track 046° to HOOZE, then on track 046° to cross SMALS at or above 7000.

LANDING RUNWAY 1L: From SMALS on track 065° to cross TAHCO at or above 6000, then on track 065° to cross GAYLZ at 5000 and at 210K. Expect RNP Z RWY 1L approach, or expect RADAR vectors to final approach course for ILS or GPS RWY 1L approaches.

LANDING RUNWAY 1R: From SMALS on track 068° to cross GUACC at or above 6000, then on track 068° to cross BAUNR at 5000 and at 210K. Expect RNP Z RWY 1R approach, or expect RADAR vectors to final approach course for ILS or GPS RWY 1R approaches.

LANDING RUNWAY 9: From SMALS on track 023° to cross MENEY at or above 6000, then on track 022° to cross NOMEY at 5000 and at 210K. Expect RNP Z RWY 9 approach, or expect RADAR vectors to final approach course for ILS or GPS RWY 9 approaches.

LANDING RUNWAY 19L: From SMALS on track 039° to RAHBB, then on track 040° to TOBYN, then on track 011° to cross ONEEL at 7000 and at 210K, then on track 011°. Expect RADAR vectors to final approach course for RNP, GPS, or ILS RWY 19L approach.

LANDING RUNWAY 19R: From SMALS on track 036° to OVALE, then on track 036° to cross BUZZR at 7000 and at 210K, then on track 011° to cross ERICM at 7000, then on track 011°. Expect RADAR vectors to final approach course for RNP, GPS, or ILS RWY 19R approach.

LANDING RUNWAY 27: From SMALS on track 053° to THICC, then on track 053° to ROCNE, then on track 094° to cross VERNs at 6000 and at 210K, then on track 094°. Expect RADAR vectors to final approach course for RNP, GPS, or ILS RWY 27 approach.

LOST COMMUNICATIONS

RUNWAY 1L: After GAYLZ proceed to WMPOW at 4000, then on ILS or LOC RWY 1L approach.

RUNWAY 1R: After BAUNR proceed to TERKY at 4000, then on ILS or LOC RWY 1R approach.

RUNWAY 9: After NOMEY proceed to WOOKIE at 4000, then on ILS or LOC RWY 9 approach.

RUNWAY 19L: After ONEEL proceed to TUSKG at 6000 and hold.

RUNWAY 19R: After ERICM proceed to CAMDO at 6000 and hold.

RUNWAY 27: After VERNs maintain 6000, proceed to CARBB and hold..

NC-3, 16 APR 2026 to 14 MAY 2026

NC-3, 16 APR 2026 to 14 MAY 2026