

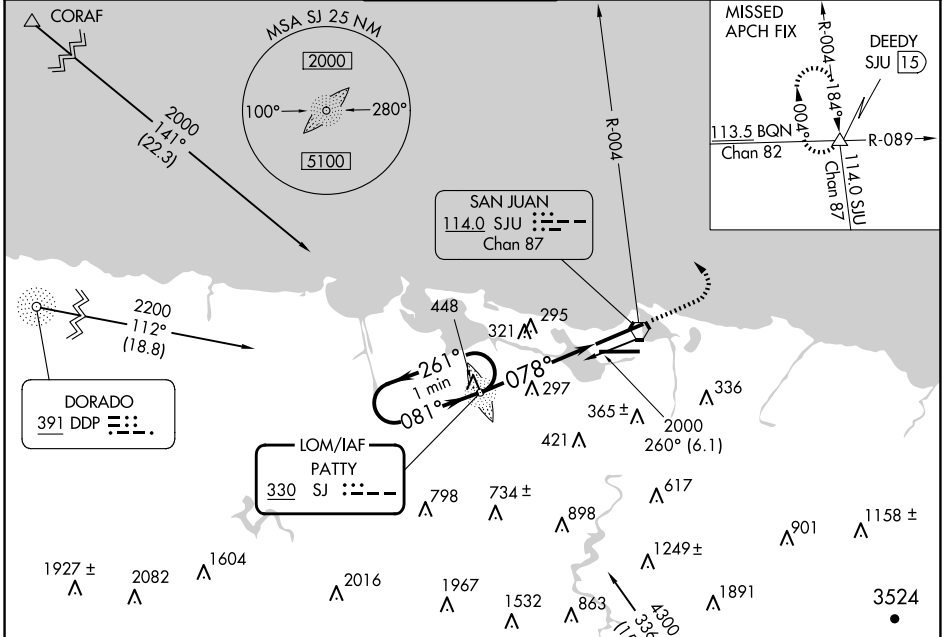
NDB RWY 8

LUIS MUNOZ MARIN INTL (SJU)(TJSJ)

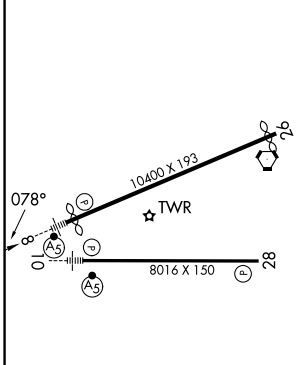
LOM SJ	APP CRS	Rwy Ldg	9384
330	078°	TDZE	9
		Apt Elev	10

	MISSED APPROACH: Climb to 2000, then climbing left turn to 3000 via SJU VORTAC R-004 to DEEDY Int/SJU 15 DME and hold.			

D-ATIS	SAN JUAN APP CON	SAN JUAN TOWER	GND CON	CLNC DEL	CPDLC
125.8	119.4 269.2 (WEST & SW) 120.9 290.2 (NORTH & EAST)	132.05 257.8	121.9 348.6	126.4 284.6	



ELEV 10	D	TDZE 9
---------	---	--------



REIL Rwy 26
HIRL Rwys 8-26 and 10-28
FAF to MAP 4.6 NM

Knots	60	90	120	150	180
Min:Sec	4:36	3:04	2:18	1:50	1:32

VGSI and descent angles not coincident (VGSI Angle 3.00/TCH 70).				
CATEGORY	A	B	C	D
S-8	600-¾	591 (600-¾)	600-1 591 (600-1)	600-1½ 591 (600-1½)
CIRCLING	600-1	590 (600-1)	740-2 730 (800-2)	920-3 910 (1000-3)

SE-3, 16 APR 2026 to 14 MAY 2026

SE-3, 16 APR 2026 to 14 MAY 2026