

APP CRS	Rwy Ldg	8016
281°	TDZE	10
	Apt Elev	10

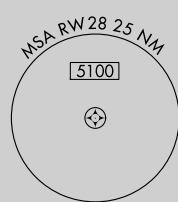
RNAV (GPS) RWY 28

LUIS MUNOZ MARIN INTL (SJU)(TJSJ)

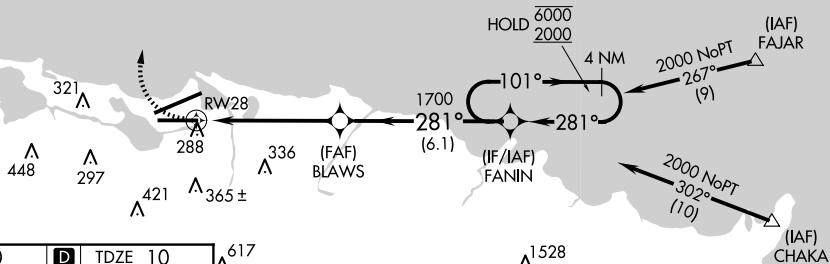
RNP APCH.
 Rwy 28 helicopter visibility reduction below 3/4 SM NA.

MISSED APPROACH: Climbing right turn to 3000 direct DEEDY and hold.

D-ATIS	SAN JUAN APP CON	SAN JUAN TOWER	GND CON	CLNC DEL	CPDLC
125.8	119.4 269.2 120.9 290.2 (WEST & SW) (NORTH & EAST)	132.05 257.8	121.9 348.6	126.4 284.6	

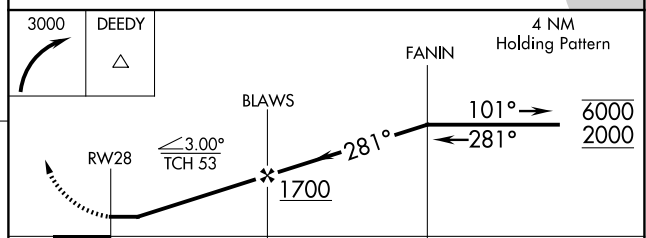
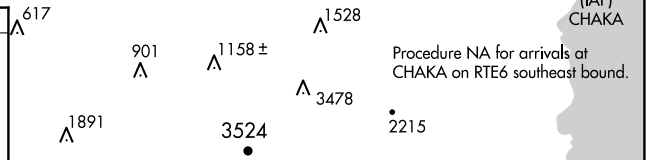
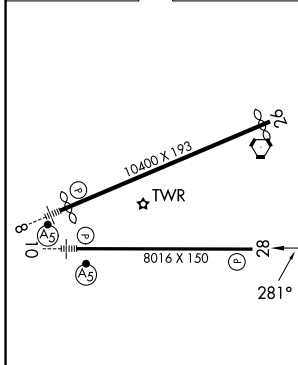


Procedure NA for arrivals at FAJAR on RTE2 eastbound.



Procedure NA for arrivals at CHAKA on RTE6 southeast bound.

ELEV 10	D	TDZE 10
---------	----------	---------



CATEGORY	A	B	C	D
LNAV MDA	540-1	530 (600-1)	540-1½	530 (600-1½)
C CIRCLING	600-1	590 (600-1)	740-2 730 (800-2)	920-3 910 (1000-3)

REIL Rwy 26
 HIRL Rwy 8-26 and 10-28

SE-3, 16 APR 2026 to 14 MAY 2026

SE-3, 16 APR 2026 to 14 MAY 2026