

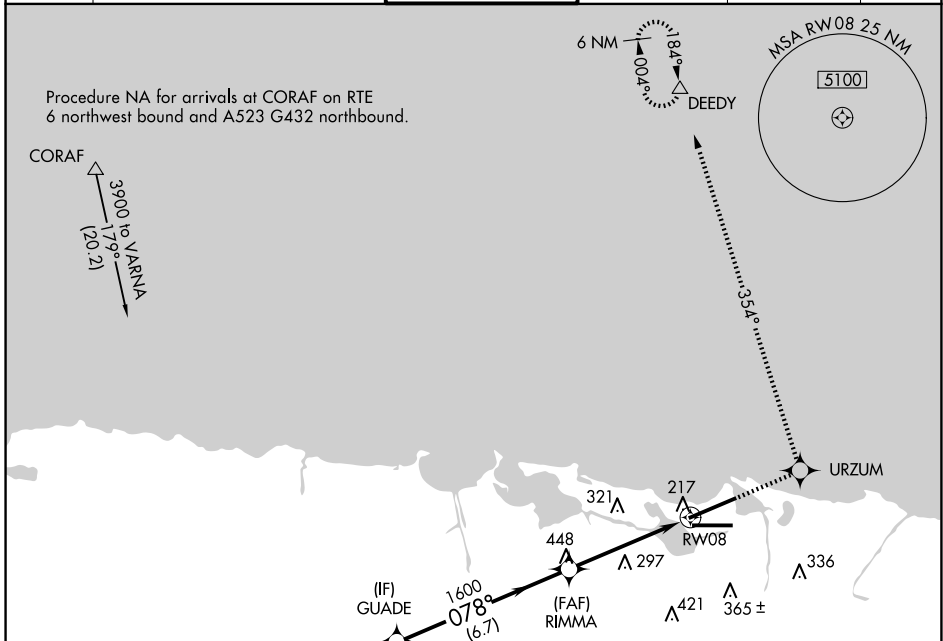
APP CRS	Rwy Ldg	9384
078°	TDZE	9
	Apt Elev	10

RNAV (GPS) RWY 8

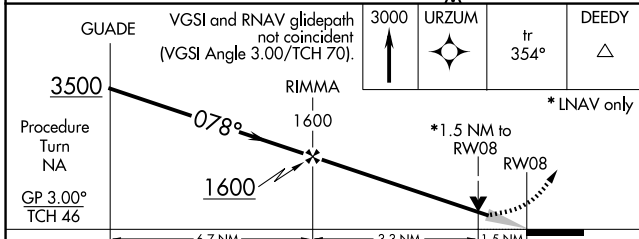
LUIS MUNOZ MARIN INTL (SJU)(TJSJ)

⚠	WAAS VNAV NA. For uncompensated Baro-VNAV systems, LNAV/VNAV NA below -15°C (5°F) or above 48°C (118°F). DME/DME RNP-0.3 NA.	MALS 	MISSED APPROACH: Climb to 3000 direct URZUM and on track 354° to DEEDY and hold.
----------	--	-----------------	--

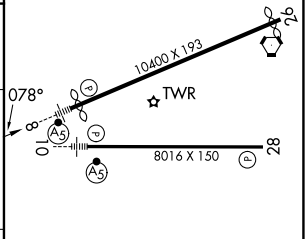
D-ATIS	SAN JUAN APP CON	SAN JUAN TOWER	GND CON	CLNC DEL	CPDLC
125.8	119.4 269.2 (WEST & SW) 120.9 290.2 (NORTH & EAST)	132.05 257.8	121.9 348.6	126.4 284.6	



(IAF) VARNNA	(IF) GUADE	(FAF) RIMMA	URZUM	DEEDY
3500 078° (7)	1600 078° (6.7)	1.5 NM to RWY 08	10400 X 193	



ELEV 10	D	TDZE 9
---------	----------	--------



Procedure Turn NA	GP 3.00°	TCH 46		
CATEGORY	A	B	C	D
LNAV/VNAV DA	530-1¼ 521 (600-1¼)			
LNAV MDA	560-½ 551 (600-½)	560-1 551 (600-1)	560-1¼ 551 (600-1¼)	
C CIRCLING	600-1 590 (600-1)	740-2 730 (800-2)	920-3 910 (1000-3)	

SE-3, 16 APR 2026 to 14 MAY 2026

SE-3, 16 APR 2026 to 14 MAY 2026